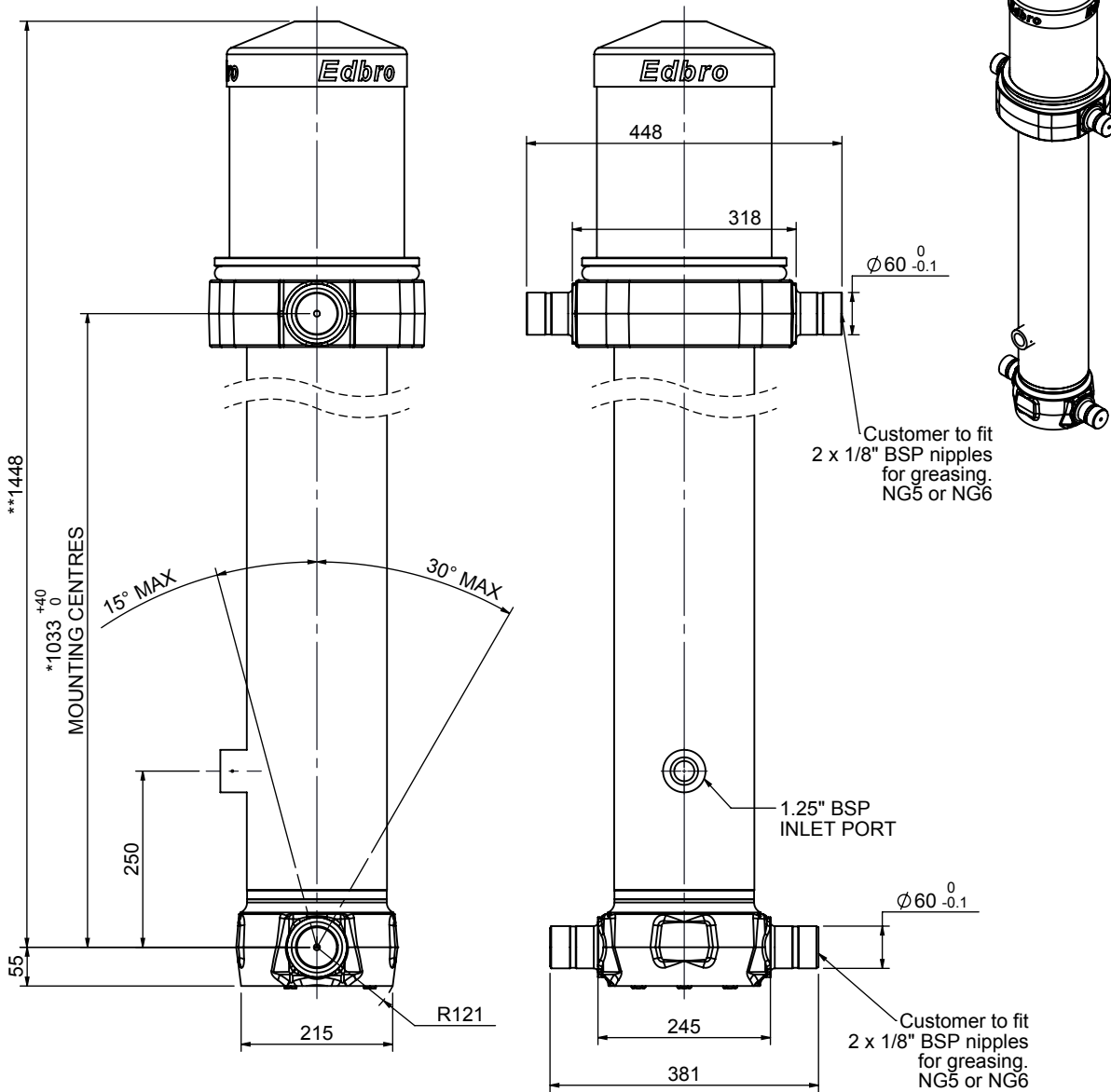


Cylinder 5 stage front end with outer cover

**ALLOW 50mm TO REMOVE CAP FOR SERVICING



*Includes 7mm Pull Out.

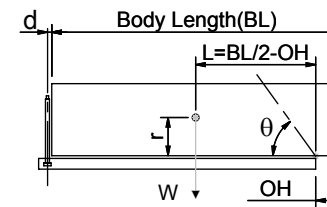
CS17L055733B25A15

SPECIFICATION

TIPPING CAPACITY : 33-49 TONNES***

| Stage | Diameter | Length | Stroke | Swept Volume |
|-------------------------|----------|-------------------------|--------|--------------|
| OUTER COVER | 248 | 380 | - | - |
| 0 | 199 | 1375 | - | - |
| 1 | 176 | 1340 | 1120 | 27 |
| 2 | 155 | 1340 | 1137 | 21 |
| 3 | 136 | 1340 | 1147 | 17 |
| 4 | 117 | 1340 | 1162 | 12 |
| 5 | 98 | 1340 | 1167 | 9 |
| Total (+5/-10) | | | 5733 | 86 |
| Final stroke reduced by | 0 | Priming Volume | | 17.8 |
| Cylinder Mass (Kg) | 240 | Total Volume (Litres) | | 103.8 |
| Maximum Pressure (Bar) | 190 | Max. first stage thrust | | 200 kN |

***TIPPING CAPACITY AT WORKING PRESSURE



| BODY LENGTH (BL) | | | | | | OH |
|------------------|-----|------|-----|------|-----|-----|
| 7000 | | 7500 | | 8000 | | |
| 37 | 48° | 35 | 45° | 33 | 42° | 150 |
| 42 | 51° | 38 | 47° | 36 | 44° | 450 |
| 49 | 53° | 43 | 49° | 39 | 46° | 750 |

d = 229; r = 900; Working Pressure 150 bar

Tipping angle (theta)

Body + payload mass, W (tonne)

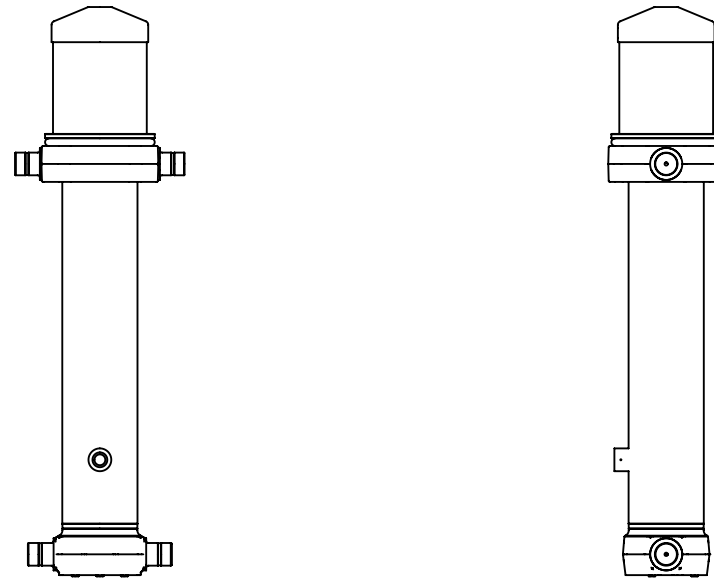
For guidance only;

Higher working pressures and tipping capacities may be possible.

To check your application email - applications@edbro.co.uk

NOTES

1. This cylinder is for lifting purposes only and side load conditions should be avoided
2. Cylinder is painted in primer paint to RAL5013
3. Refer to www.edbro.com for:-
 - Bracket details
 - Installation instructions that must be observed
 - Correct oil selection
 - An explanation of tipping capacity



CS17L055733B25A15