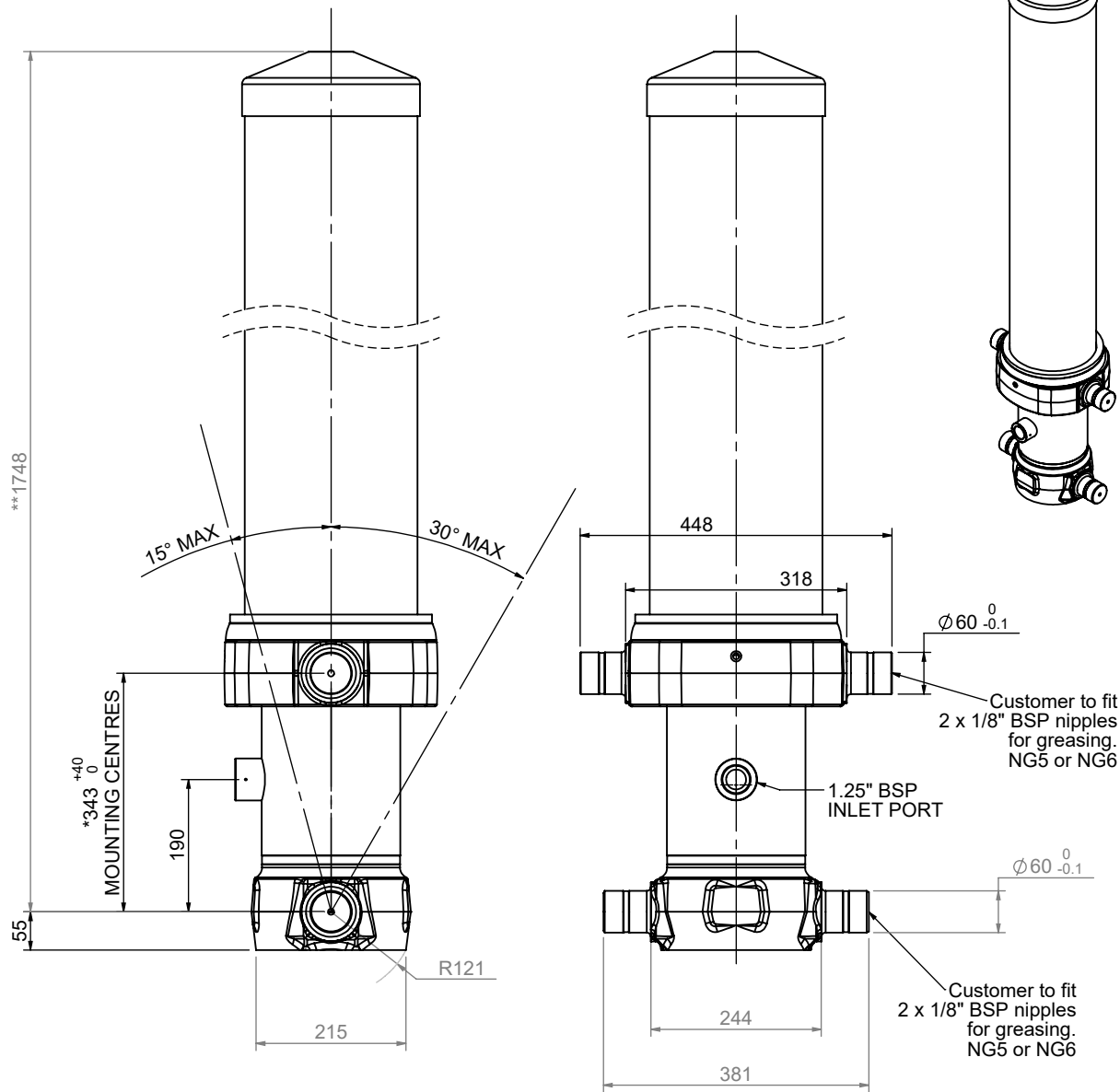


# Cylinder 5 stage front end with outer cover

\*\*ALLOW 50mm TO REMOVE CAP FOR SERVICING



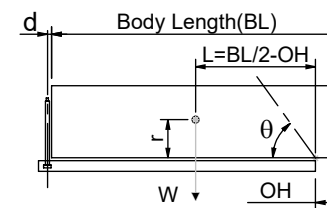
\*Includes 7mm Pull Out.

# CS17L057233B19A11HE-203

SPECIFICATION TIPPING CAPACITY : 35-45 TONNES\*\*\*

Stage	Diameter	Length	Stroke	Swept Volume
OUTER COVER	248	1370	-	-
0	199	1675	-	-
1	176	1640	1420	35
2	155	1640	1437	27
3	136	1640	1447	21
4	117	1640	1462	16
5	98	1640	1467	11
Total (+5/-10)			7233	110
Final stroke reduced by	0	Priming Volume		1
Cylinder Mass (Kg)	307	Total Volume (Litres)		111
Maximum Pressure (Bar)	190	Max. first stage thrust		200 KN

\*\*\*TIPPING CAPACITY AT WORKING PRESSURE



BODY LENGTH (BL)						OH
9040		9492		9944		
38	47°	37	45°	35	42°	150
41	49°	39	46°	38	44°	450
45	50°	42	48°	40	45°	750

$d = 229; r = 900$ ; Working Pressure 167 bar  
 Tipping angle ( $\theta$ )  
 Body + payload mass, W (tonne)  
**For guidance only;**  
 Higher working pressures and tipping capacities may be possible.  
 To check your application email - [applications@edbro.co.uk](mailto:applications@edbro.co.uk)

## NOTES

1. This cylinder is for lifting purposes only and side load conditions should be avoided
2. Cylinder is painted in primer paint to RAL9005
3. Refer to [www.edbro.com](http://www.edbro.com) for:-
  - Bracket details
  - Installation instructions that must be observed
  - Correct oil selection
  - An explanation of tipping capacity



**Jost UK Ltd**  
 Edbro House, Nelson Street, Bolton, England, BL3 2JJ  
 Tel +44 (0) 1204 528888 Fax +44 (0) 1204 531957  
 Email: [sales@jost-world.com](mailto:sales@jost-world.com) Web: [www.edbro.com](http://www.edbro.com)

Technical Specifications are subject to change without notice  
 Date Created/Updated: Tuesday, January 5, 2021  
 Refer [www.edbro.com](http://www.edbro.com) to confirm latest specification  
 All dimensions are in 'mm', unless otherwise stated