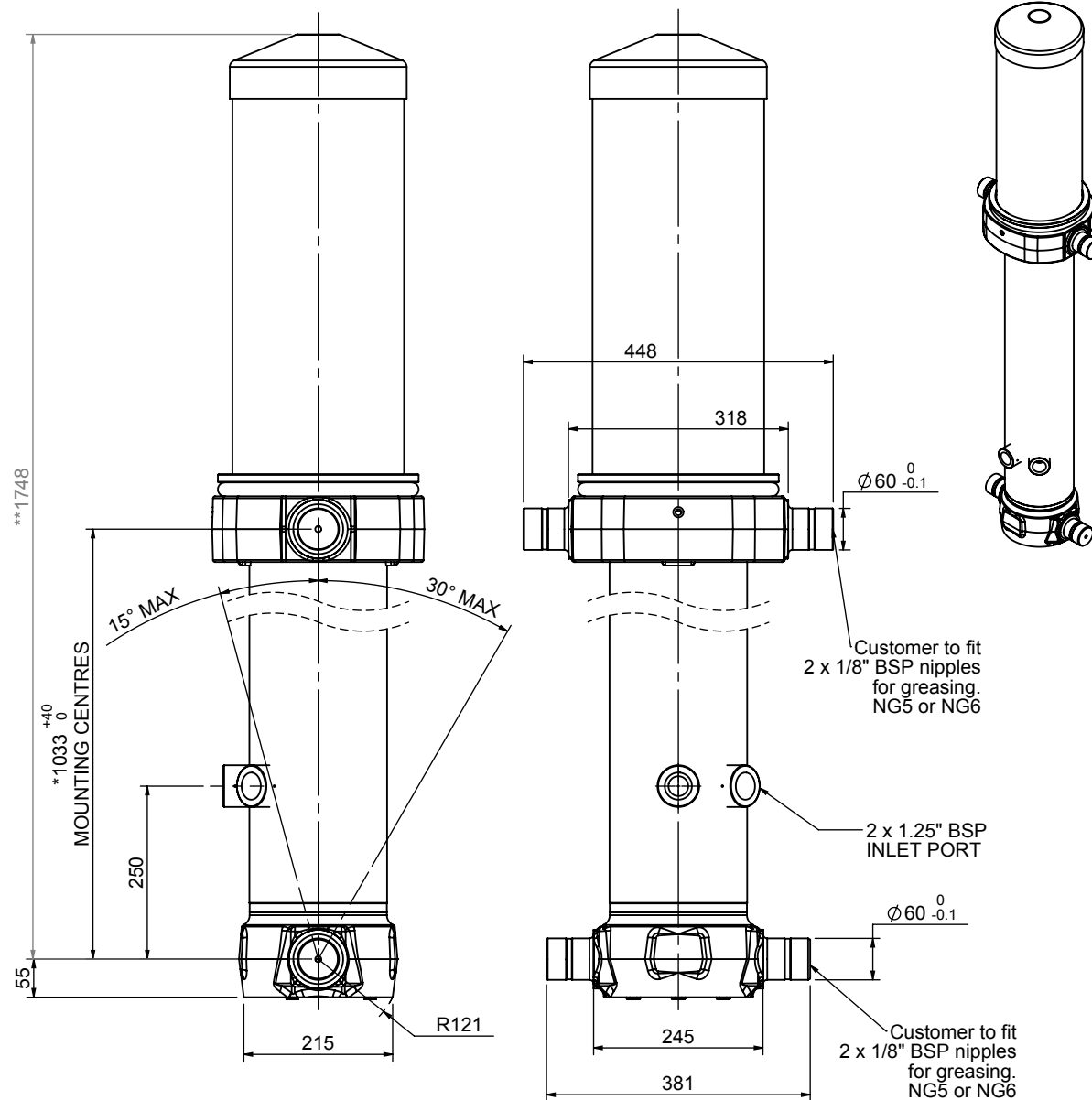


# Cylinder 5 stage front end with outer cover

\*\*ALLOW 50mm TO REMOVE CAP FOR SERVICING



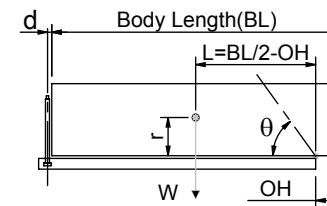
\*Includes 7mm Pull Out.

# CS17L057233T25A15

SPECIFICATION TIPPING CAPACITY : 29-40 TONNES\*\*\*

Stage	Diameter	Length	Stroke	Swept Volume
OUTER COVER	248	680	-	-
0	199	1675	-	-
1	176	1640	1420	35
2	155	1640	1437	27
3	136	1640	1447	21
4	117	1640	1462	16
5	98	1640	1467	11
Total (+5/-10)			7233	110
Final stroke reduced by	0	Priming Volume	16.9	
Cylinder Mass (Kg)	284	Total Volume (Litres)	126.9	
Maximum Pressure (Bar)	190	Max. first stage thrust	200 KN	

\*\*\*TIPPING CAPACITY AT WORKING PRESSURE



BODY LENGTH (BL)						OH
8500		9000		9500		
33	51°	31	47°	29	45°	150
36	53°	33	49°	31	46°	450
46	55°	36	51°	34	48°	750

d = 229; r = 900; Working Pressure 135 bar

**For guidance only;**

Higher working pressures and tipping capacities may be possible.

To check your application email - [applications@edbro.co.uk](mailto:applications@edbro.co.uk)

## NOTES

1. This cylinder is for lifting purposes only and side load conditions should be avoided
2. Cylinder is painted in primer paint to RAL5013
3. Refer to [www.edbro.com](http://www.edbro.com) for:-
  - Bracket details
  - Installation instructions that must be observed
  - Correct oil selection
  - An explanation of tipping capacity