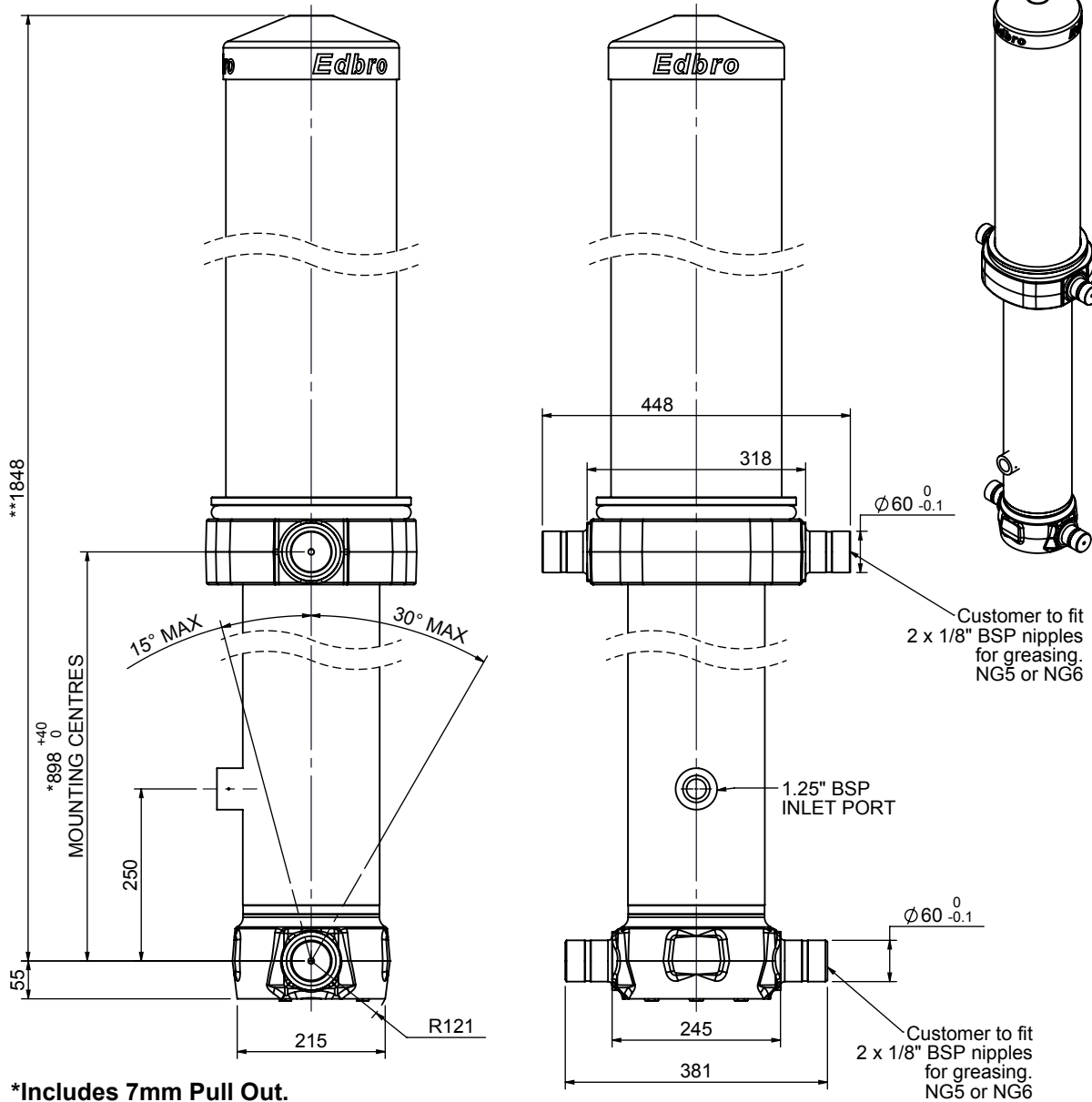


# Cylinder 5 stage front end with outer cover

\*\*ALLOW 50mm TO REMOVE CAP FOR SERVICING



\*Includes 7mm Pull Out.

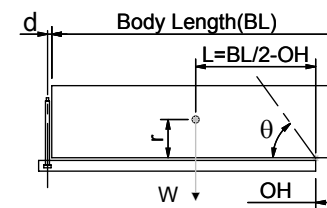
# CS17L057733B25A14

## SPECIFICATION

TIPPING CAPACITY : 29-39 TONNES\*\*\*

Stage	Diameter	Length	Stroke	Swept Volume
OUTER COVER	248	915	-	-
0	199	1775	-	-
1	176	1740	1520	37
2	155	1740	1537	29
3	136	1740	1547	22
4	117	1740	1562	17
5	98	1740	1567	12
Total (+5/-10)			7733	117
Final stroke reduced by	0	Priming Volume	23.8	
Cylinder Mass (Kg)	302	Total Volume (Litres)	140.8	
Maximum Pressure (Bar)	190	Max. first stage thrust	200 KN	

## \*\*\*TIPPING CAPACITY AT WORKING PRESSURE



BODY LENGTH (BL)						OH
9000		9500		10000		
32	51°	31	48°	29	46°	150
35	53°	33	50°	31	47°	450
39	55°	36	52°	34	49°	750

d = 229; r = 900; Working Pressure 135 bar

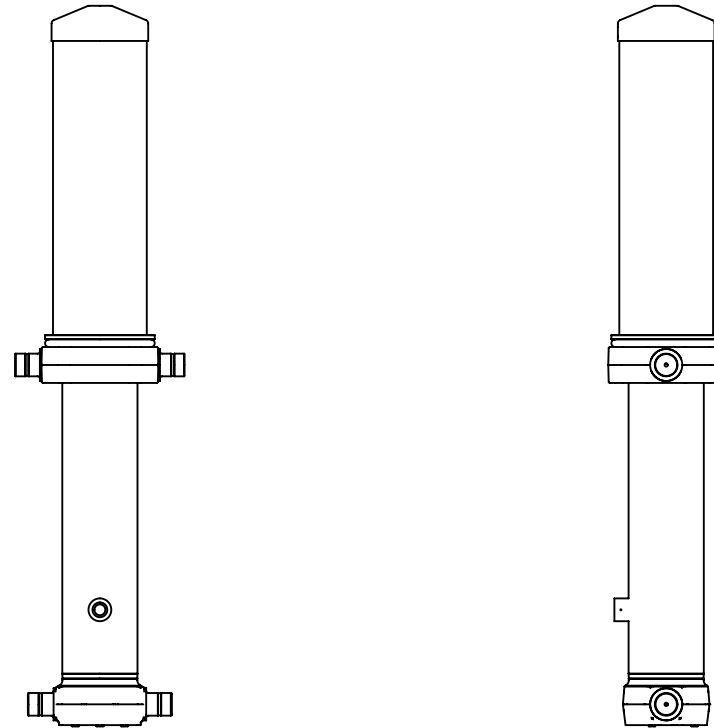
Tipping angle ( $\theta$ )  
Body + payload mass, W (tonne)

## For guidance only;

Higher working pressures and tipping capacities may be possible.  
To check your application email - [applications@edbro.co.uk](mailto:applications@edbro.co.uk)

## NOTES

- This cylinder is for lifting purposes only and side load conditions should be avoided
- Cylinder is painted in primer paint to RAL5013
- Refer to [www.edbro.com](http://www.edbro.com) for:-
  - Bracket details
  - Installation instructions that must be observed
  - Correct oil selection
  - An explanation of tipping capacity



CS17L057733B25A14