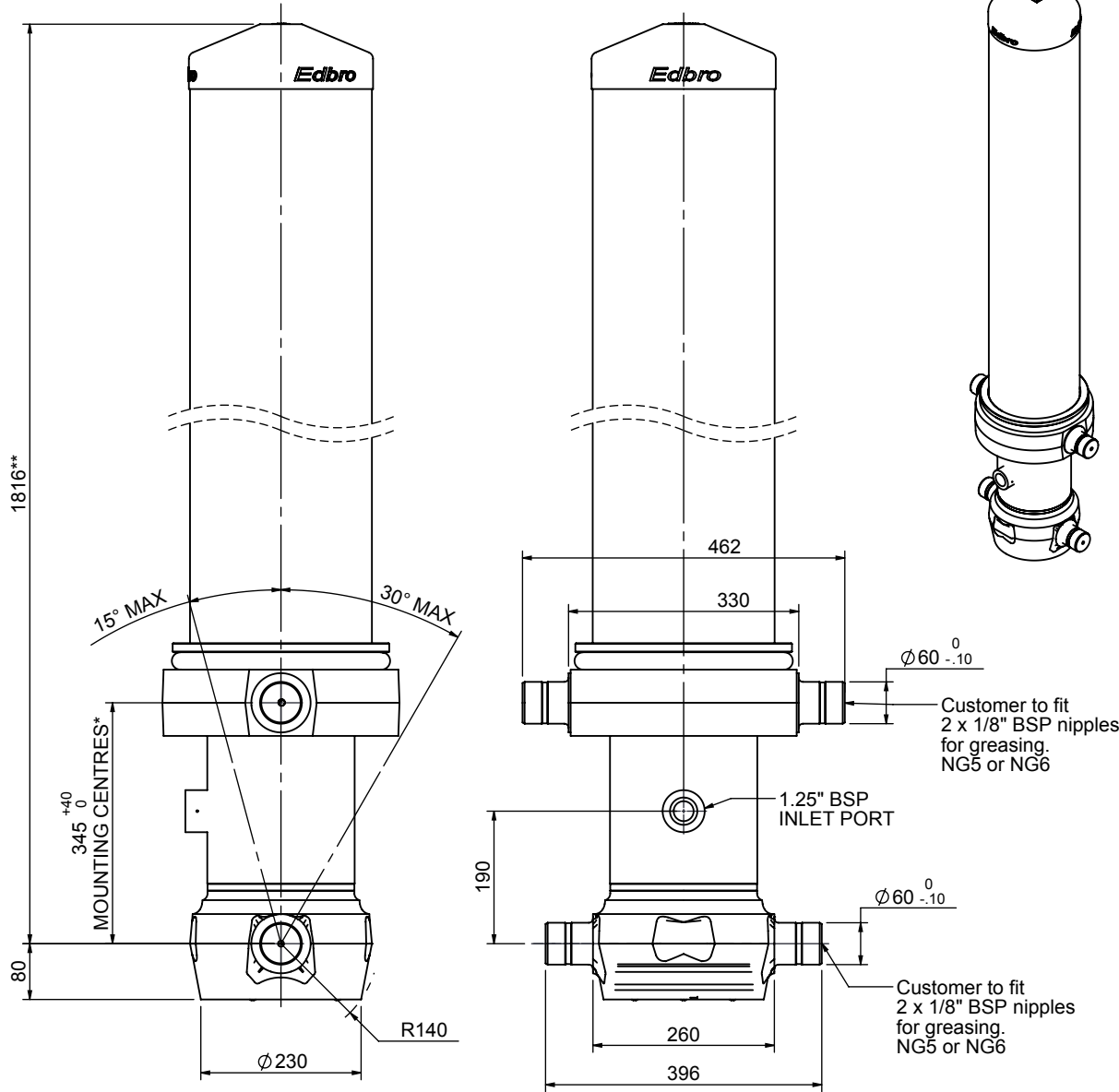


Cylinder 5 stage front end with outer cover

****ALLOW 50mm TO REMOVE CAP FOR SERVICING**

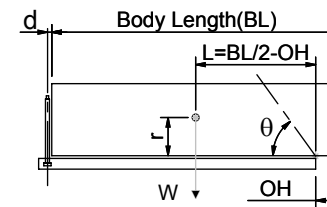


*Includes 7mm Pull Out.

CS180046166B19A11

SPECIFICATION		TIPPING CAPACITY : 44-63 TONNES***		
Stage	Diameter	Length	Stroke	Swept Volume
-	-	-	-	-
OUTER COVER	261	1435	-	-
0	211	1775	-	-
1	188	1740	1520	42
2	167	1740	1537	34
3	147	1740	1547	26
4	127	1740	1562	20
Total (+5/-10)			6166	122
Final stroke reduced by	0	Priming Volume		29
Cylinder Mass (Kg)	352	Total Volume (Litres)		151
Maximum Pressure (Bar)	190	Max. first stage thrust		265 KN

***TIPPING CAPACITY AT WORKING PRESSURE



BODY LENGTH (BL)						OH
7250		7750		8250		
49	50°	46	47°	44	44°	150
55	52°	50	49°	47	45°	450
63	55°	56	51°	52	47°	750

$d = 229$; $r = 900$; Working Pressure 120 bar

Tipping angle (θ)

Body + payload mass, W (tonne)

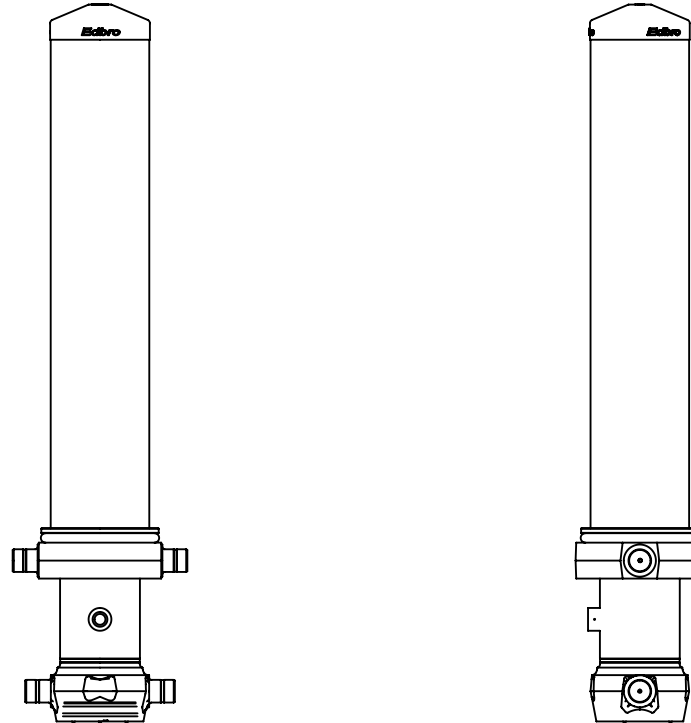
For guidance only;

Higher working pressures and tipping capacities may be possible.

To check your application email - applications@edbro.co.uk

NOTES

1. This cylinder is for lifting purposes only and side load conditions should be avoided
2. Cylinder is painted in primer paint to RAL5013
3. Refer to www.edbro.com for;-
 - Bracket details
 - Installation instructions that must be observed
 - Correct oil selection
 - An explanation of tipping capacity



CS180046166B19A11