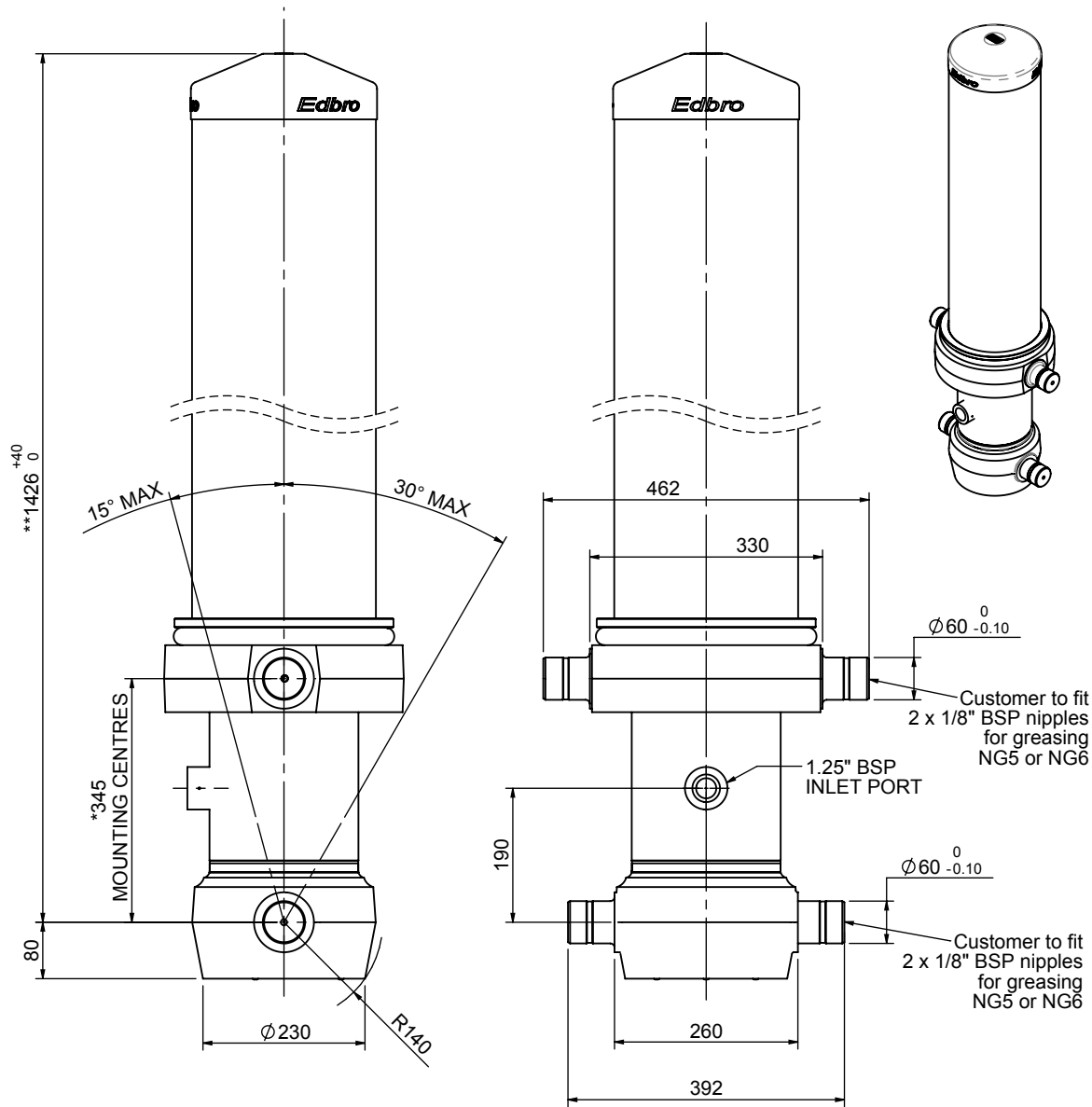


Cylinder 5 stage front end with outer cover

****ALLOW 50mm TO REMOVE CAP FOR SERVICING**

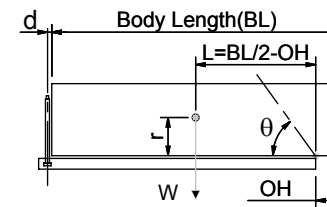


*Includes 12mm Pull Out.

CS180055733B19A11

SPECIFICATION		TIPPING CAPACITY : 43-68 TONNES***		
Stage	Diameter	Length	Stroke	Swept Volume
OUTER COVER	261	1045	-	-
0	211	1375	-	-
1	188	1340	1115	31
2	167	1340	1137	25
3	147	1340	1147	19
4	127	1340	1162	15
5	105	1340	1167	10
Total (+5/-10)			5728	100
Final stroke reduced by	0	Priming Volume		19
Cylinder Mass (Kg)	316	Total Volume (Litres)		119
Maximum Pressure (Bar)	190	Max. first stage thrust		265 KN

***TIPPING CAPACITY AT WORKING PRESSURE



BODY LENGTH (BL)						OH
6750		7250		7750		
50	50°	46	46°	43	43°	150
57	52°	51	48°	47	45°	450
68	55°	58	51°	52	47°	750

d = 229; r = 900; Working Pressure 165 bar

Tipping angle (θ)

Body + payload mass, W (tonne)

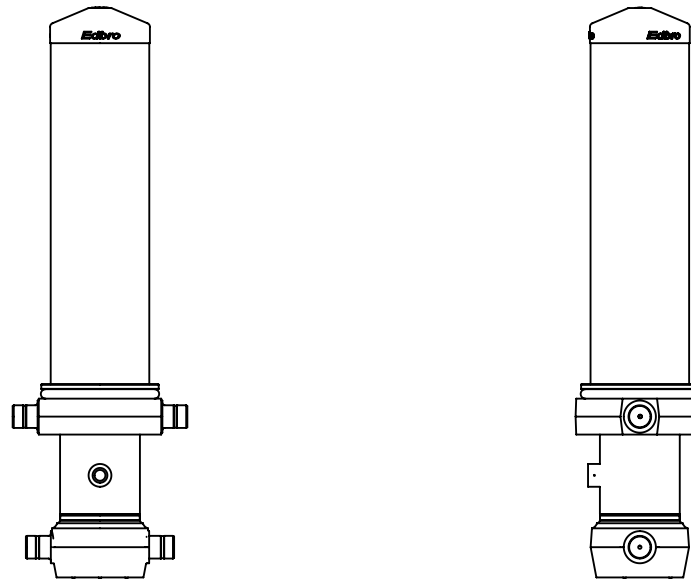
For guidance only;

Higher working pressures and tipping capacities may be possible.

To check your application email - applications@edbro.co.uk

NOTES

1. This cylinder is for lifting purposes only and side load conditions should be avoided
2. Cylinder is painted in primer paint to RAL5013
3. Refer to www.edbro.com for:-
 - Bracket details
 - Installation instructions that must be observed
 - Correct oil selection
 - An explanation of tipping capacity



CS180055733B19A11