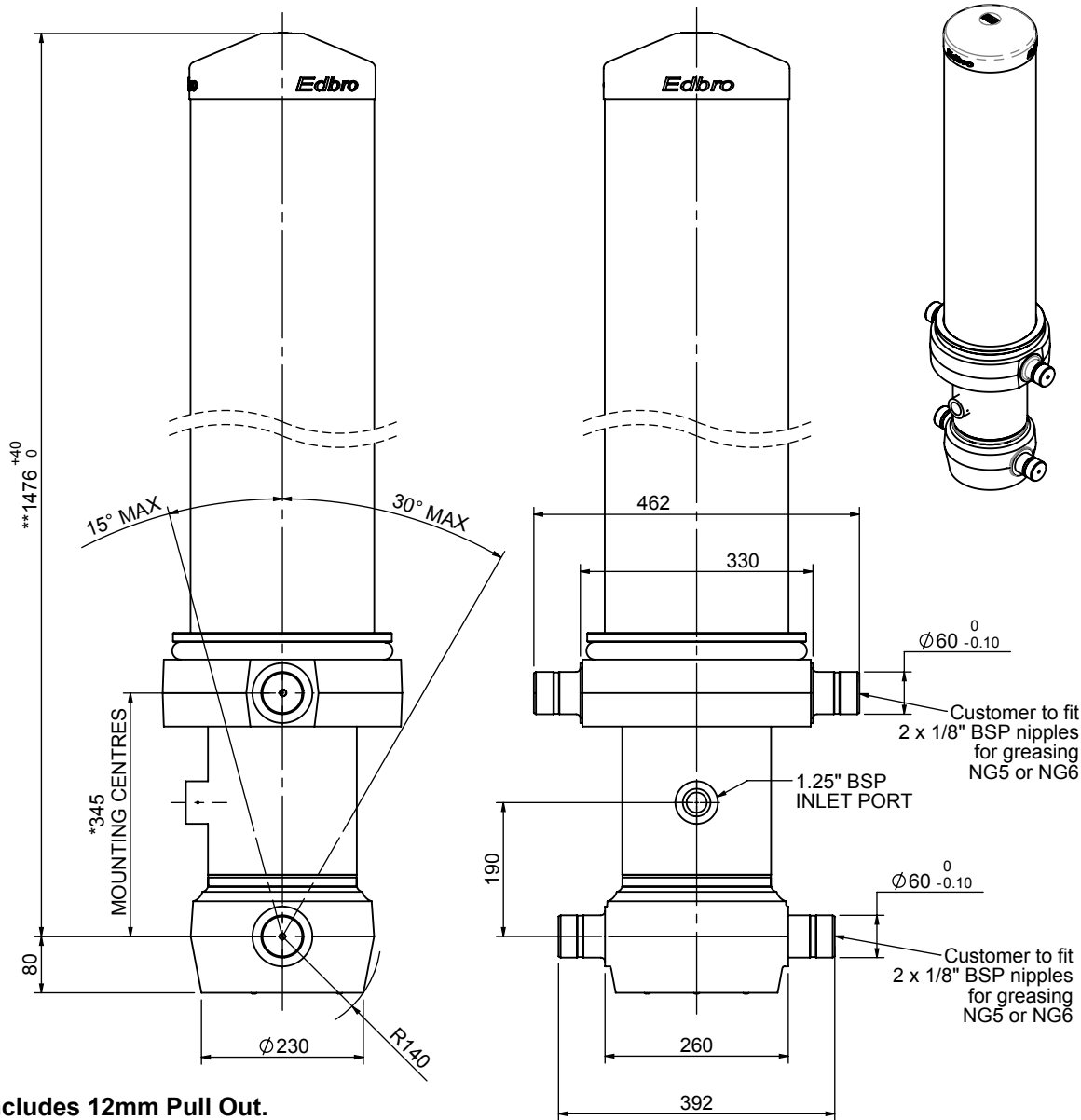


Cylinder 5 stage front end with outer cover

****ALLOW 50mm TO REMOVE CAP FOR SERVICING**

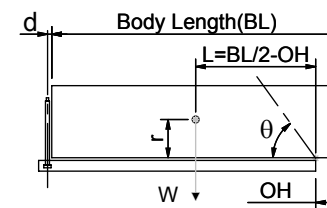


*Includes 12mm Pull Out.

CS180055983B19A11

SPECIFICATION		TIPPING CAPACITY : 43-66 TONNES***		
Stage	Diameter	Length	Stroke	Swept Volume
OUTER COVER	261	1095	-	-
0	211	1425	-	-
1	188	1390	1165	32
2	167	1390	1187	26
3	147	1390	1197	20
4	127	1390	1212	15
5	105	1390	1217	11
Total (+5/-10)			5978	104
Final stroke reduced by	0	Priming Volume		20
Cylinder Mass (Kg)	325	Total Volume (Litres)		124
Maximum Pressure (Bar)	190	Max. first stage thrust		265 KN

***TIPPING CAPACITY AT WORKING PRESSURE



BODY LENGTH (BL)						OH
7000		7500		8000		
49	50°	46	47°	43	44°	150
56	53°	51	49°	47	45°	450
66	55°	57	51°	52	47°	750

d = 229; r = 900; Working Pressure 165 bar

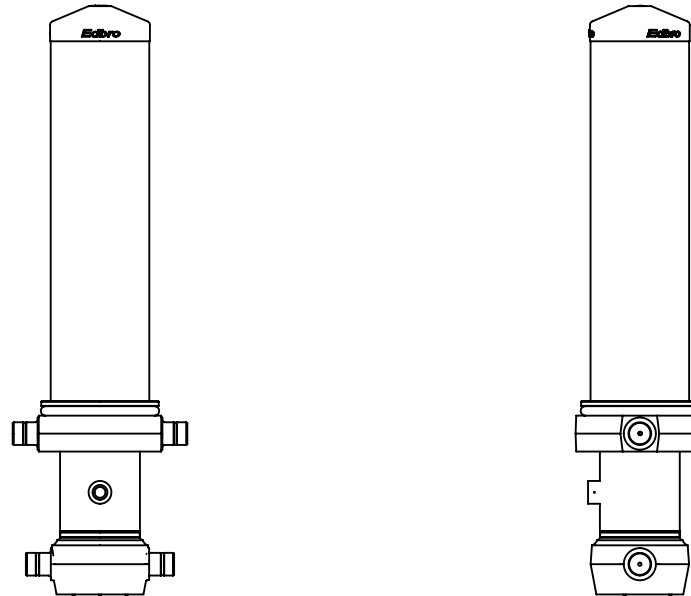
Tipping angle (θ)
Body + payload mass, W (tonne)

For guidance only;

Higher working pressures and tipping capacities may be possible.
To check your application email - applications@edbro.co.uk

NOTES

1. This cylinder is for lifting purposes only and side load conditions should be avoided
2. Cylinder is painted in primer paint to RAL5013
3. Refer to www.edbro.com for:-
 - Bracket details
 - Installation instructions that must be observed
 - Correct oil selection
 - An explanation of tipping capacity



CS180055983B19A11