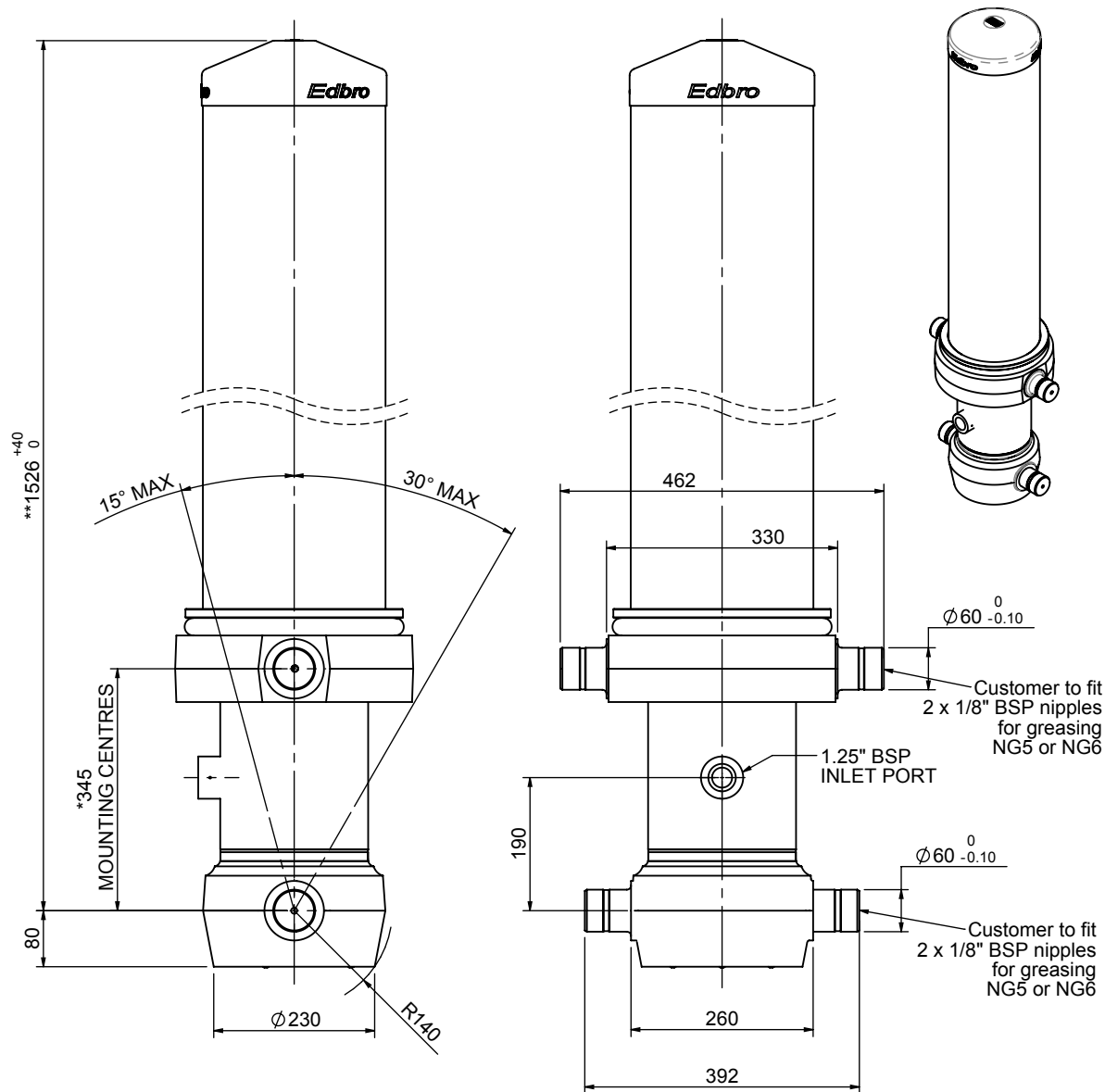


Cylinder 5 stage front end with outer cover

****ALLOW 50mm TO REMOVE CAP FOR SERVICING**



*Includes 12mm Pull Out.

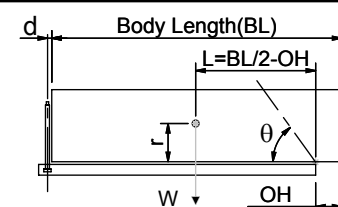
CS180056233B19A11

SPECIFICATION

TIPPING CAPACITY : 43-65 TONNES***

Stage	Diameter	Length	Stroke	Swept Volume
OUTER COVER	261	1145	-	-
0	211	1475	-	-
1	188	1440	1215	34
2	167	1440	1237	27
3	147	1440	1247	21
4	127	1440	1262	16
5	105	1440	1267	11
Total (+5/-10)			6228	109
Final stroke reduced by	0	Priming Volume		20
Cylinder Mass (Kg)	334	Total Volume (Litres)		129
Maximum Pressure (Bar)	190	Max. first stage thrust		265 KN

***TIPPING CAPACITY AT WORKING PRESSURE



BODY LENGTH (BL)						OH
7250	7750	7850		8250		
49	51°	45	47°	43	44°	150
55	53°	50	49°	46	46°	450
65	56°	56	51°	51	48°	750

$d = 229$; $r = 900$; Working Pressure 165 bar
 Tipping angle (θ)
 Body + payload mass, W (tonne)

For guidance only;
 Higher working pressures and tipping capacities may be possible.
 To check your application email - applications@edbro.co.uk

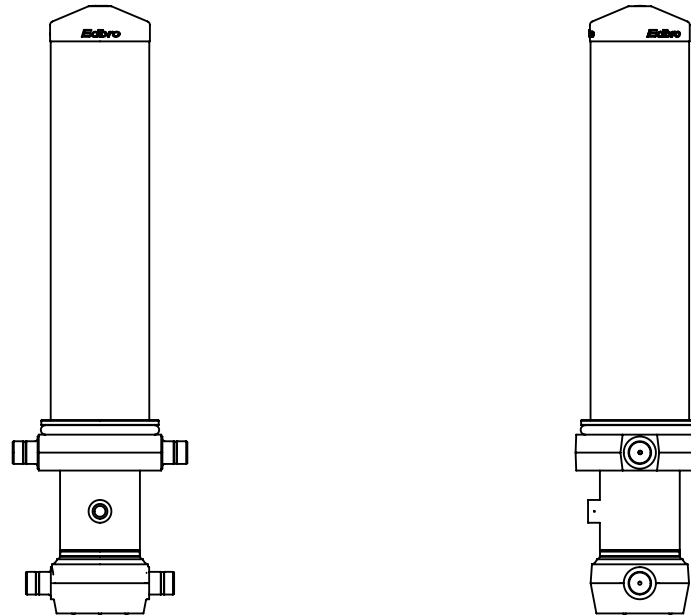
NOTES

1. This cylinder is for lifting purposes only and side load conditions should be avoided
2. Cylinder is painted in primer paint to RAL5013
3. Refer to www.edbro.com for:-
 - Bracket details
 - Installation instructions that must be observed
 - Correct oil selection
 - An explanation of tipping capacity



Edbro plc
 Nelson Street, Bolton, England, BL3 2JJ
 Tel +44 (0) 1204 528888 Fax +44 (0) 1204 531957
 Email: postmaster@edbro.com Web: www.edbro.com

Technical Specifications are subject to change without notice
 Date Created/Updated: 17 August 2012
 Refer www.edbro.com to confirm latest specification
 All dimensions are in 'mm', unless otherwise stated



CS180056233B19A11