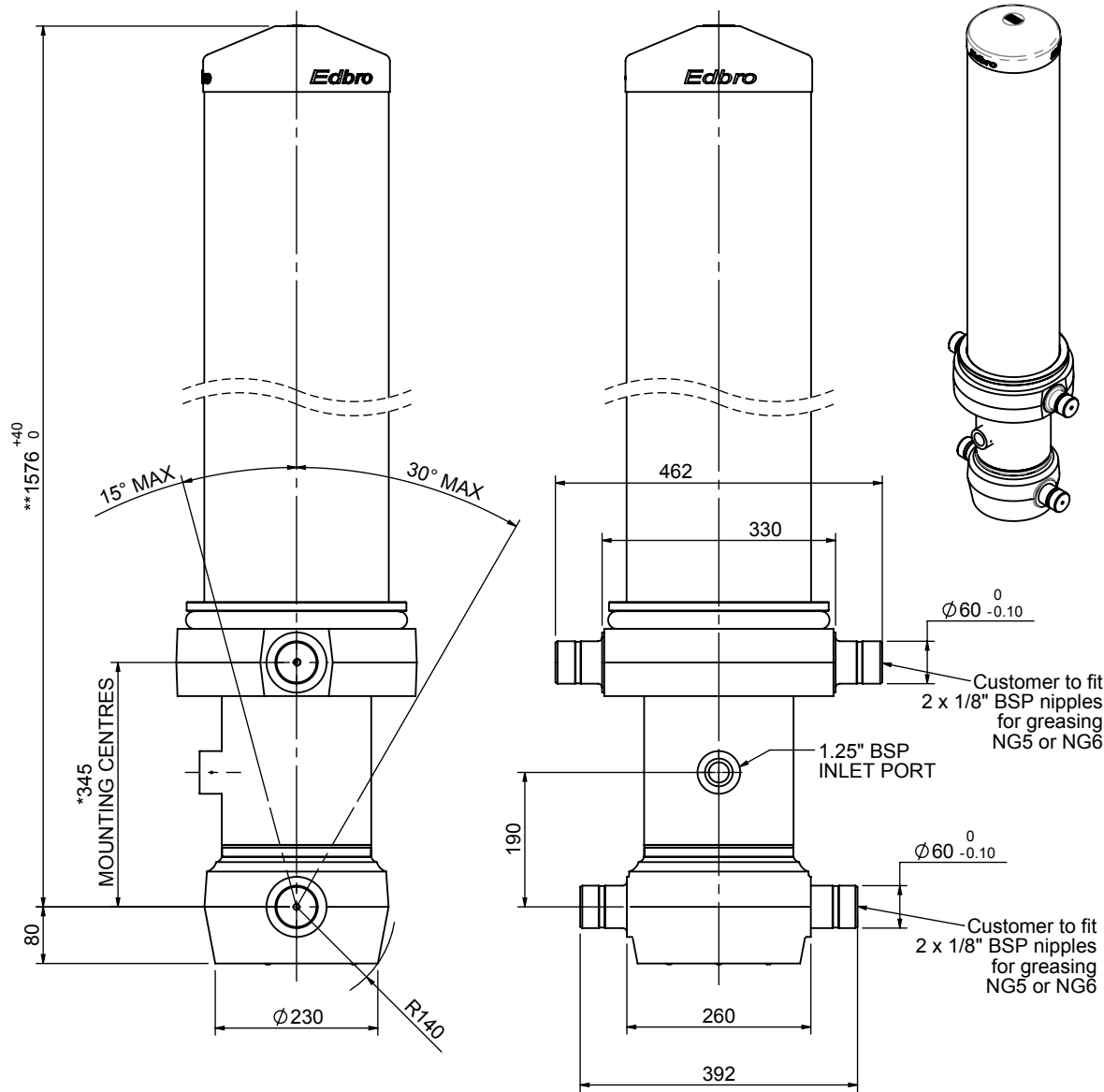


# Cylinder 5 stage front end with outer cover

**\*\*ALLOW 50mm TO REMOVE CAP FOR SERVICING**

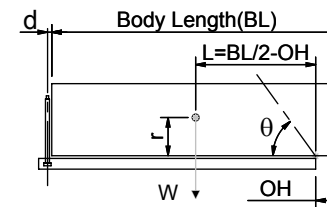


\*Includes 12mm Pull Out.

## CS180056483B19A11

SPECIFICATION		TIPPING CAPACITY : 43-63 TONNES***		
Stage	Diameter	Length	Stroke	Swept Volume
OUTER COVER	261	1195	-	-
0	211	1525	-	-
1	188	1490	1265	35
2	167	1490	1287	28
3	147	1490	1297	22
4	127	1490	1312	17
5	105	1490	1317	11
Total (+5/-10)			6478	113
Final stroke reduced by	0	Priming Volume		21
Cylinder Mass (Kg)	344	Total Volume (Litres)		134
Maximum Pressure (Bar)	190	Max. first stage thrust		265 KN

### \*\*\*TIPPING CAPACITY AT WORKING PRESSURE



BODY LENGTH (BL)						OH
7500	8000	8500				
49	51°	45	47°	43	45°	150
55	53°	50	49°	46	46°	450
63	56°	56	52°	51	51°	750

$d = 229$ ;  $r = 900$ ; Working Pressure 165 bar

Tipping angle ( $\theta$ )

Body + payload mass, W (tonne)

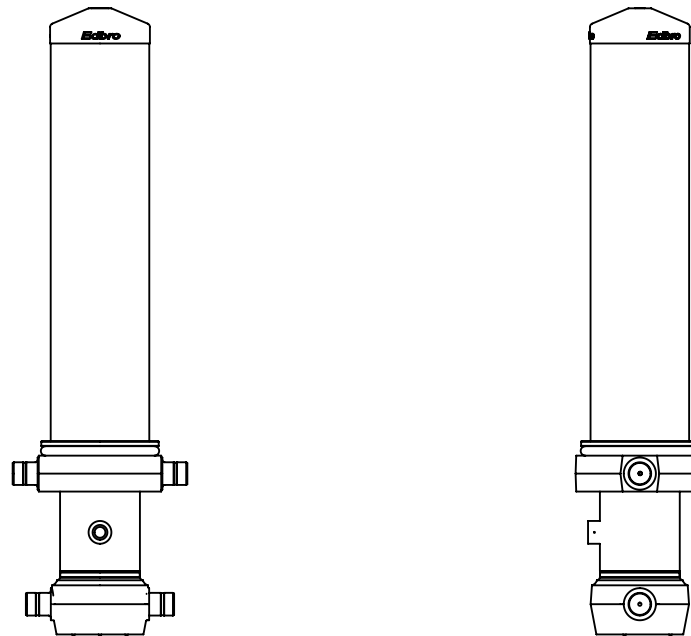
### For guidance only;

Higher working pressures and tipping capacities may be possible.

To check your application email - [applications@edbro.co.uk](mailto:applications@edbro.co.uk)

### NOTES

1. This cylinder is for lifting purposes only and side load conditions should be avoided
2. Cylinder is painted in primer paint to RAL5013
3. Refer to [www.edbro.com](http://www.edbro.com) for:-
  - Bracket details
  - Installation instructions that must be observed
  - Correct oil selection
  - An explanation of tipping capacity



CS180056483B19A11