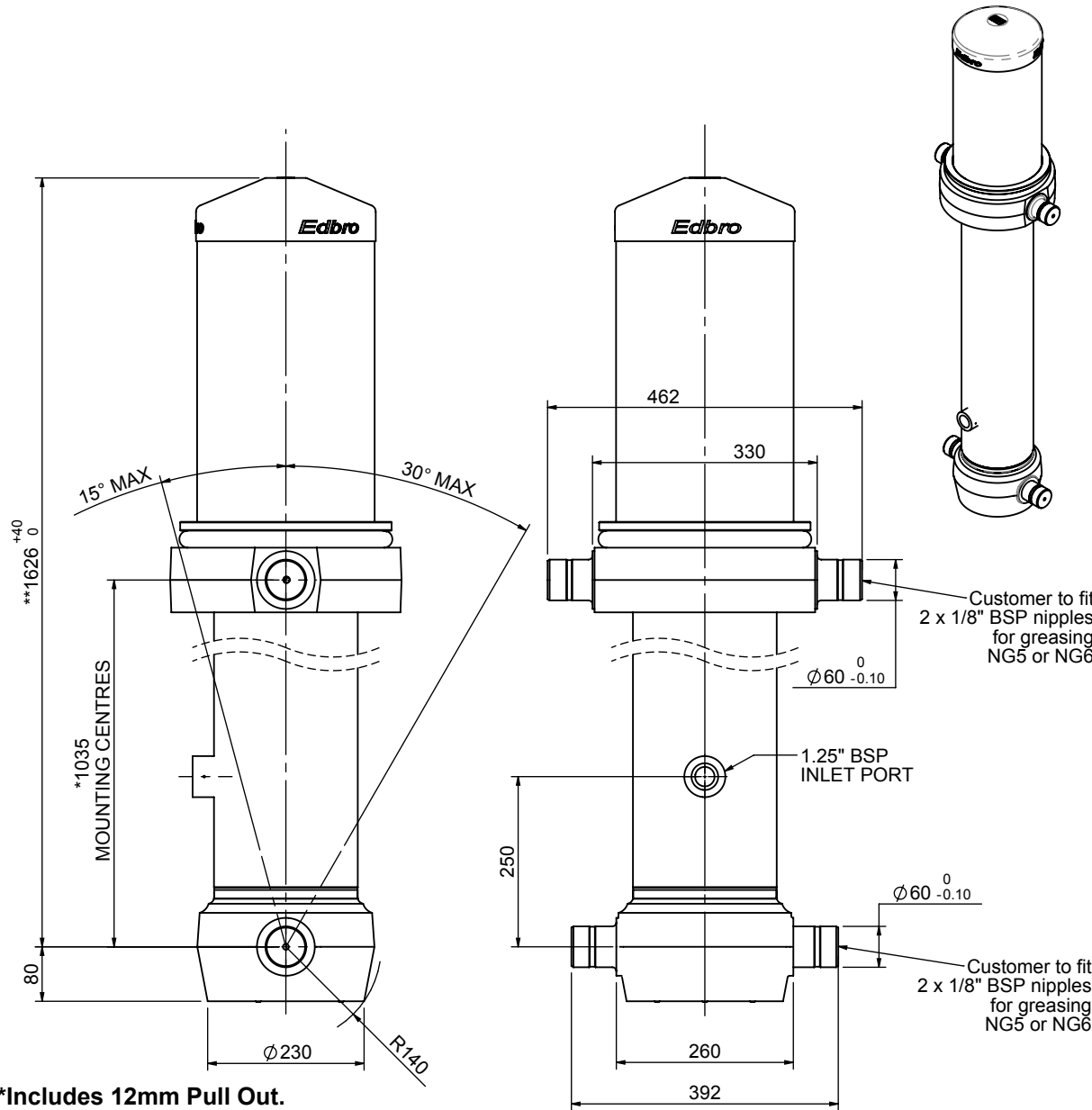


Cylinder 5 stage front end with outer cover

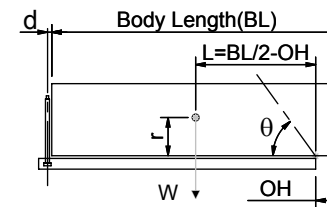
****ALLOW 50mm TO REMOVE CAP FOR SERVICING**



CS180056733B25A15

SPECIFICATION		TIPPING CAPACITY : 44-61 TONNES***		
Stage	Diameter	Length	Stroke	Swept Volume
OUTER COVER	261	555	-	-
0	211	1575	-	-
1	188	1540	1315	37
2	167	1540	1337	29
3	147	1540	1347	23
4	127	1540	1362	17
5	105	1540	1367	12
Total (+5/-10)			6728	118
Final stroke reduced by	0	Priming Volume		22
Cylinder Mass (Kg)	332	Total Volume (Litres)		140
Maximum Pressure (Bar)	190	Max. first stage thrust		265 KN

***TIPPING CAPACITY AT WORKING PRESSURE



BODY LENGTH (BL)						OH
8000		8500		9000		
49	50°	46	47°	44	44°	150
54	52°	50	49°	47	46°	450
61	54°	55	51°	51	47°	750

$d = 229$; $r = 900$; Working Pressure 175 bar
 Tipping angle (θ)
 Body + payload mass, W (tonne)
For guidance only;
 Higher working pressures and tipping capacities may be possible.
 To check your application email - applications@edbro.co.uk

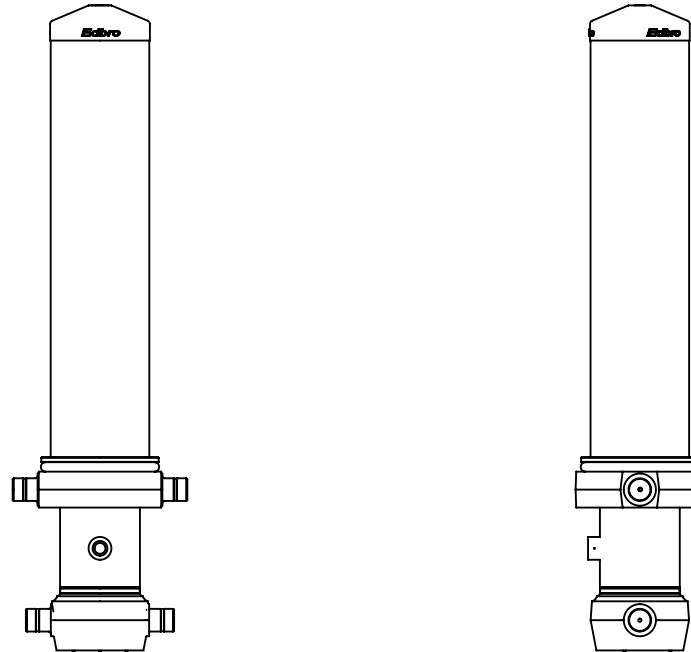
NOTES

1. This cylinder is for lifting purposes only and side load conditions should be avoided
2. Cylinder is painted in primer paint to RAL5013
3. Refer to www.edbro.com for:-
 - Bracket details
 - Installation instructions that must be observed
 - Correct oil selection
 - An explanation of tipping capacity



Edbro plc
 Nelson Street, Bolton, England, BL3 2JJ
 Tel +44 (0) 1204 528888 Fax +44 (0) 1204 531957
 Email: postmaster@edbro.com Web: www.edbro.com

Technical Specifications are subject to change without notice
 Date Created/Updated: 17 August 2012
 Refer www.edbro.com to confirm latest specification
 All dimensions are in 'mm', unless otherwise stated



CS180056733B19A11