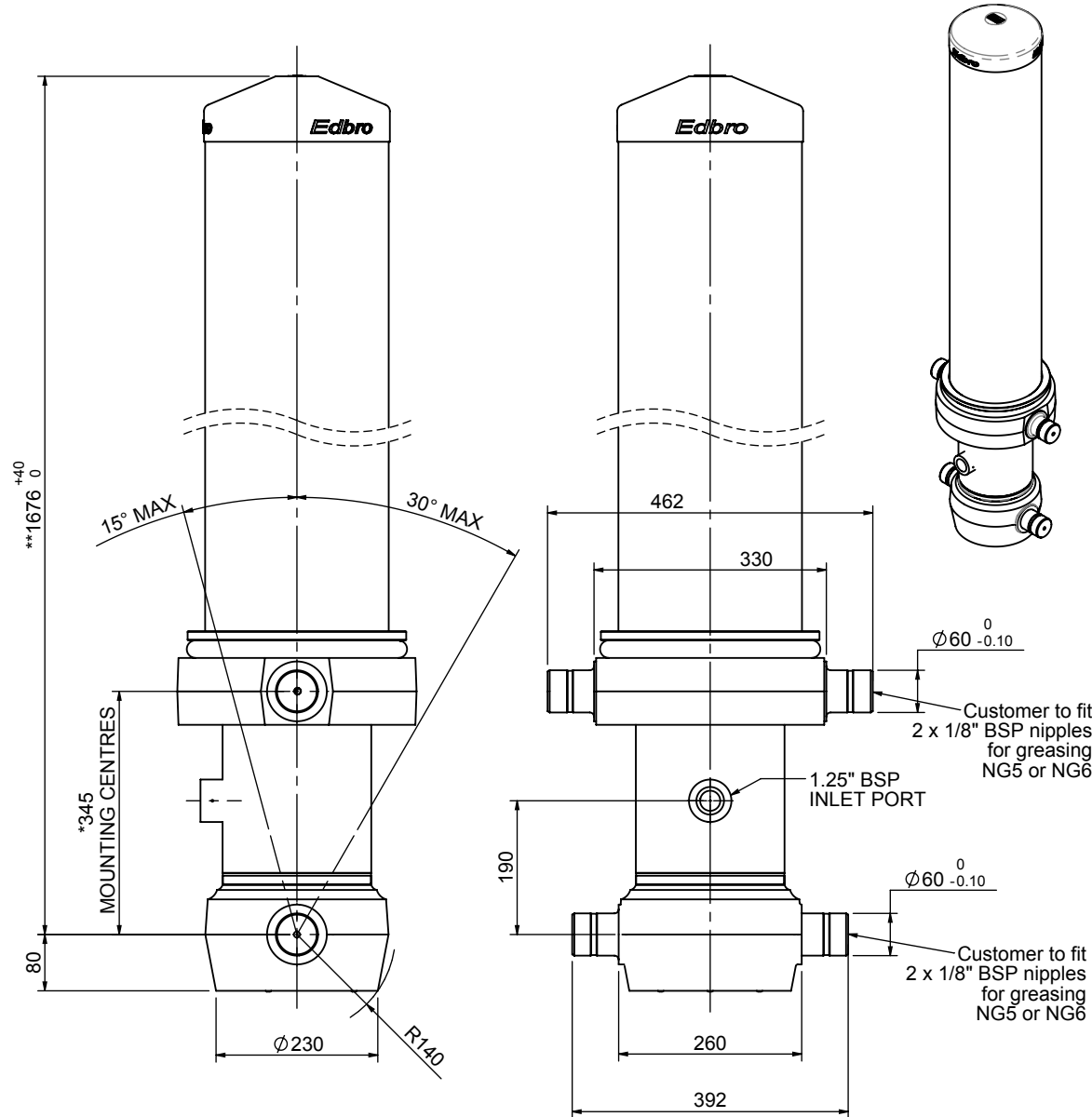


Cylinder 5 stage front end with outer cover

****ALLOW 50mm TO REMOVE CAP FOR SERVICING**

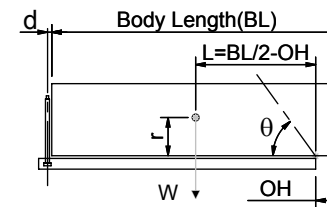


***Includes 12mm Pull Out.**

CS180056983B19A11

SPECIFICATION		TIPPING CAPACITY : 44-61 TONNES***		
Stage	Diameter	Length	Stroke	Swept Volume
OUTER COVER	261	1295	-	-
0	211	1625	-	-
1	188	1590	1365	38
2	167	1590	1387	30
3	147	1590	1397	24
4	127	1590	1412	18
5	105	1590	1417	12
Total (+5/-10)			6978	122
Final stroke reduced by	0	Priming Volume		23
Cylinder Mass (Kg)	362	Total Volume (Litres)		145
Maximum Pressure (Bar)	190	Max. first stage thrust		265 KN

***TIPPING CAPACITY AT WORKING PRESSURE



BODY LENGTH (BL)						OH
8250		8750		9250		
49	50°	46	47°	44	44°	150
54	52°	50	49°	47	46°	450
61	54°	55	50°	51	47°	750

$d = 229$; $r = 900$; Working Pressure 175 bar

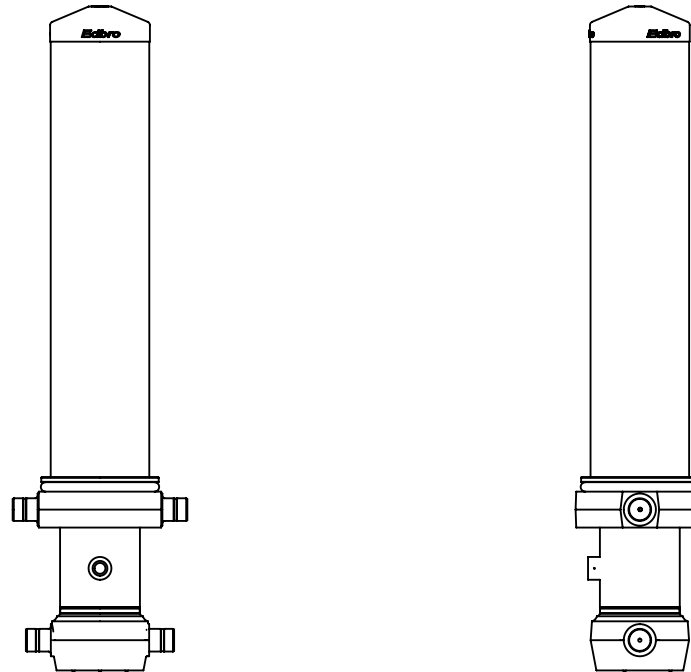
Tipping angle (θ)
Body + payload mass, W (tonne)

For guidance only;

Higher working pressures and tipping capacities may be possible.
To check your application email - applications@edbro.co.uk

NOTES

1. This cylinder is for lifting purposes only and side load conditions should be avoided
2. Cylinder is painted in primer paint to RAL5013
3. Refer to www.edbro.com for;-
 - Bracket details
 - Installation instructions that must be observed
 - Correct oil selection
 - An explanation of tipping capacity



CS180056983B19A11