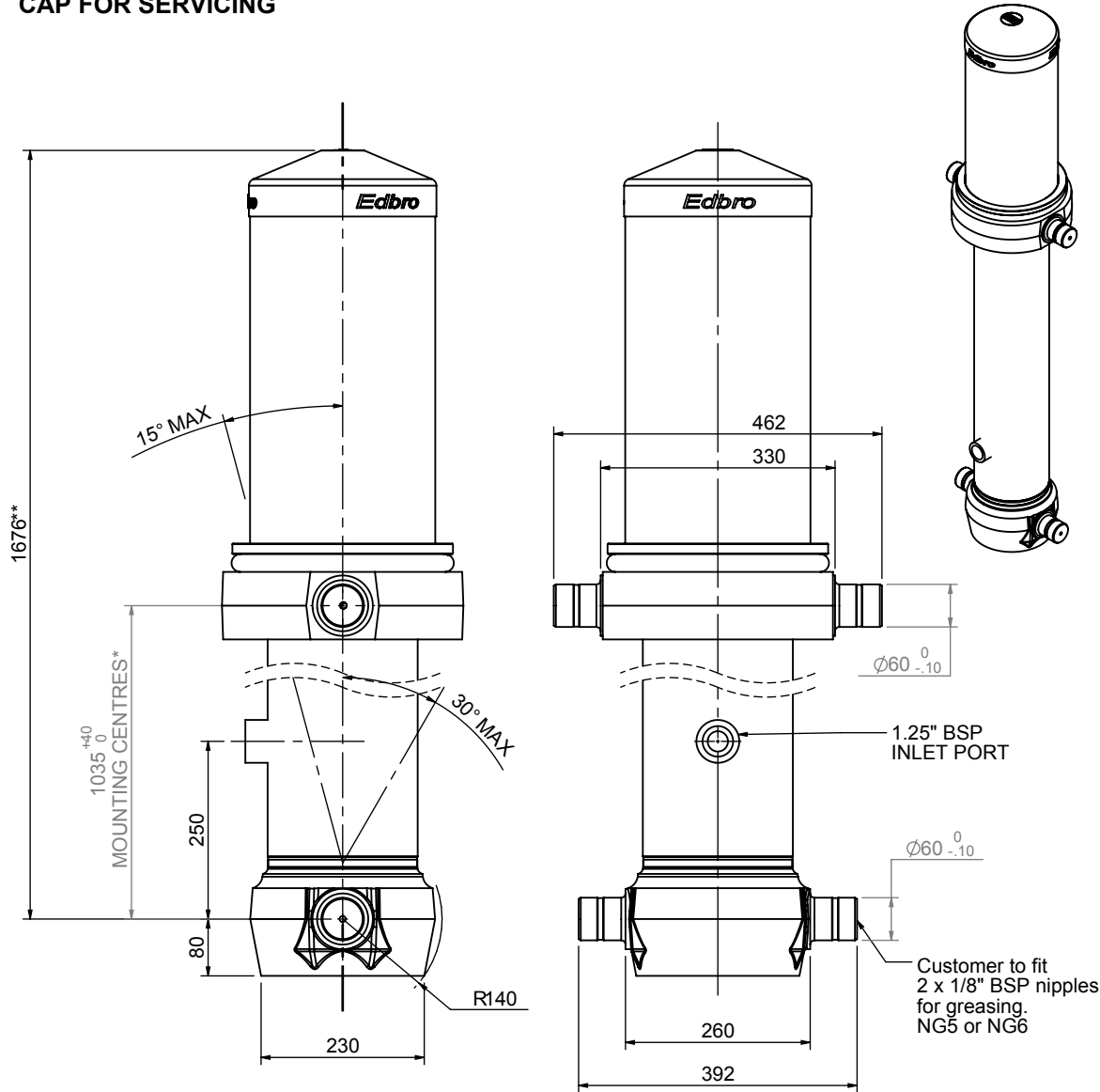


Cylinder 5 stage front end with Outer Cover

****ALLOW 50mm TO REMOVE CAP FOR SERVICING**



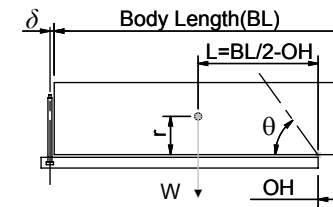
***Includes 12mm Pull Out**

CS180056983B25A15

SPECIFICATION		RATED CAPACITY : 43-57 TONNES***		
Stage	Diameter	Length	Stroke	Swept Volume
OUTER COVER	261	605	-	-
0	211	1625	-	-
1	188	1590	1364	38
2	167	1590	1387	30
3	147	1590	1397	24
4	127	1590	1412	18
5	105	1590	1417	12
Final stroke reduced by	0	Total (+5/-10)	6977	122
Cylinder Mass (Kg)	342.10	Priming Volume	23	
Rated Pressure (Bar)	175	Total Volume (Litres)	145	
Maximum Pressure (Bar)	175	Max. first stage thrust	260 KN	

***TIPPING CAPACITY AT RATED PRESSURE

d = 229 ; r = 900



BODY LENGTH (BL)					OH	
8500	9000	9500				
47	49°	45	46°	43	43°	150
52	51°	48	47°	46	45°	450
57	53°	53	49°	49	46°	750

— Tipping angle (θ)
— Body + payload mass, W (tonne)

For guidance only;

Higher Rated Pressures may be possible. To check your application, email Edbro plc at <applications@edbro.co.uk>

NOTES

- If hydraulic pressure is used to limit overloading, the system relief valve must be set to the Rated Pressure unless agreed otherwise by Edbro
- The system relief valve can be set to Maximum Pressure if the load is limited by other means. See RATINGS page for advice
- This cylinder is for lifting purposes only and sload conditions must be avoided
- Cylinder is painted in primer paint to RAL5013
- See bracket options page BRKT01, BRKT02
- See installation instructions INSTALL01
- Use oil according to specification OIL01

Edbro
SETTING THE INDUSTRY STANDARD

Edbro plc
Nelson Street, Bolton, Lancashire BL3 2JJ UK
Tel +44 (0) 1204 528888 Fax +44 (0) 1204 531957
Email: postmaster@edbro.com Web: www.edbro.com

Technical Specifications are subject to change without notice
Date Created/Updated: 26 August 2009 13:31:03
Refer www.edbro.com to confirm latest specification
All dimensions are in 'mm', unless otherwise stated