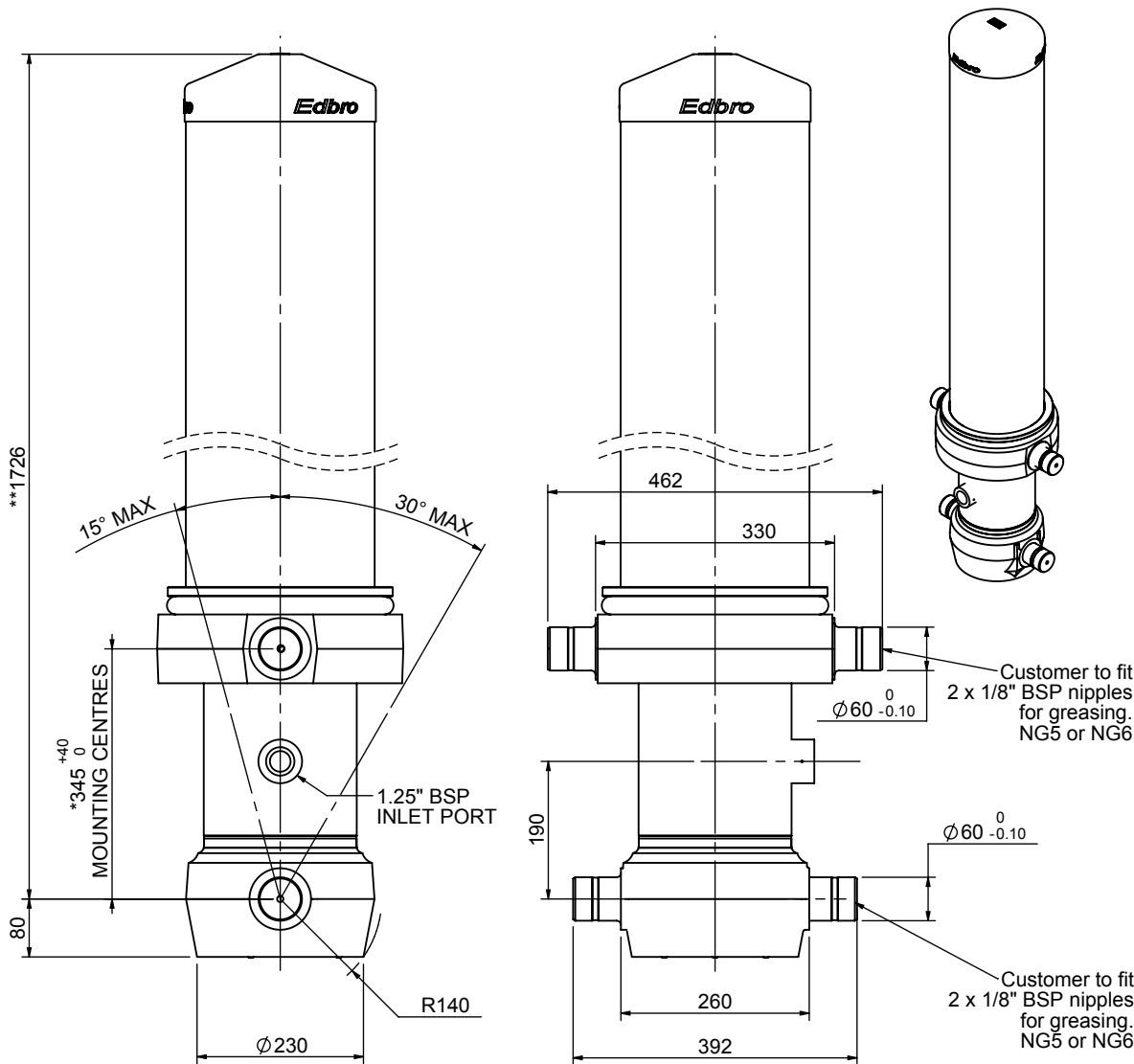


# Cylinder 5 stage front end with outer cover

**\*\*ALLOW 50mm TO REMOVE CAP FOR SERVICING**

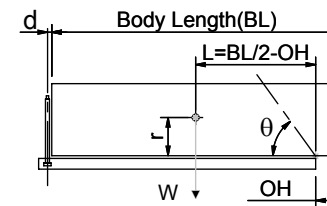


**\*Includes 12mm Pull Out. All Stages Chrome Plated**

# CS180057233N19A11C

SPECIFICATION		TIPPING CAPACITY : 44-60 TONNES***		
Stage	Diameter	Length	Stroke	Swept Volume
Outer Cover	261	1345	-	-
0	211	1675	-	-
1	188	1640	1415	39
2	167	1640	1437	31
3	147	1640	1447	25
4	127	1640	1462	19
5	105	1640	1467	13
Total (+5/-10)			7228	127
Final stroke reduced by	0	Priming Volume		24
Cylinder Mass (Kg)	371	Total Volume (Litres)		127
Maximum Pressure (Bar)	190	Max. first stage thrust		265 KN

## \*\*\*TIPPING CAPACITY AT WORKING PRESSURE



BODY LENGTH (BL)						OH
8500		9000		9500		
49	50°	46	47°	44	45°	150
54	52°	50	49°	47	46°	450
60	54°	55	51°	51	48°	750

$d = 229; r = 900; \text{Working Pressure } 175 \text{ bar}$

### For guidance only;

Higher working pressures and tipping capacities may be possible.  
To check your application email - [applications@edbro.co.uk](mailto:applications@edbro.co.uk)

## NOTES

1. This cylinder is for lifting purposes only and side load conditions should be avoided
2. Cylinder is painted in primer paint to RAL5013
3. Refer to [www.edbro.com](http://www.edbro.com) for:-
  - Bracket details
  - Installation instructions that must be observed
  - Correct oil selection
  - An explanation of tipping capacity