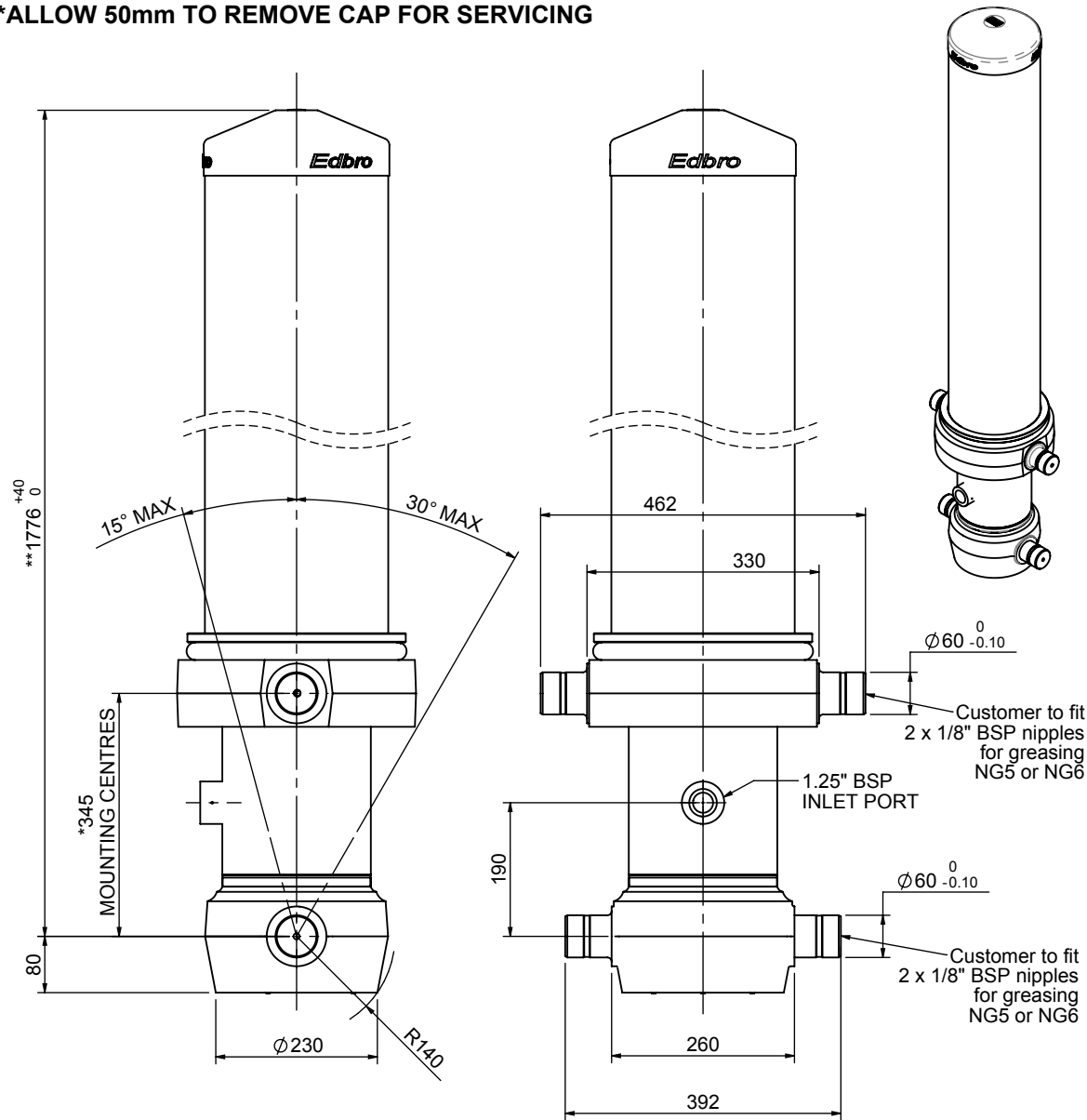


Cylinder 5 stage front end with outer cover

****ALLOW 50mm TO REMOVE CAP FOR SERVICING**

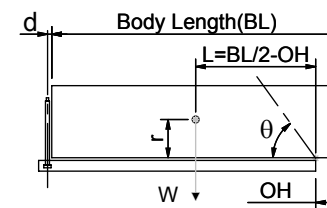


*Includes 12mm Pull Out.

CS180057483B19A11

SPECIFICATION		TIPPING CAPACITY : 44-59 TONNES***		
Stage	Diameter	Length	Stroke	Swept Volume
OUTER COVER	261	1395	-	-
0	211	1725	-	-
1	188	1690	1465	41
2	167	1690	1487	33
3	147	1690	1497	25
4	127	1690	1512	19
5	105	1690	1517	13
Total (+5/-10)			7478	131
Final stroke reduced by	0	Priming Volume		24
Cylinder Mass (Kg)	380	Total Volume (Litres)		155
Maximum Pressure (Bar)	190	Max. first stage thrust		265 KN

***TIPPING CAPACITY AT WORKING PRESSURE



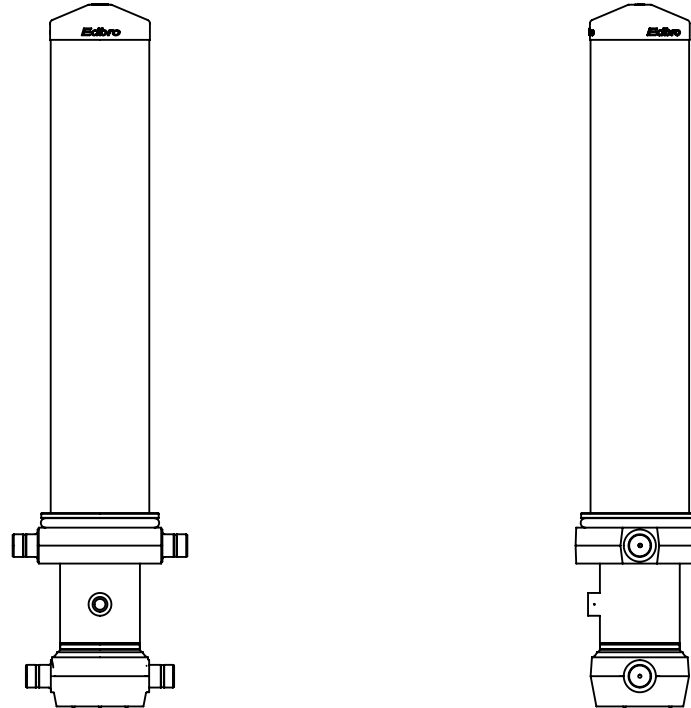
BODY LENGTH (BL)						OH
8750	9250	9750				
49	50°	46	47°	44	45°	150
53	52°	50	49°	47	46°	450
59	54°	54	51°	51	48°	750

$d = 229$; $r = 900$; Working Pressure 175 bar
 Tipping angle (θ)
 Body + payload mass, W (tonne)

For guidance only;
 Higher working pressures and tipping capacities may be possible.
 To check your application email - applications@edbro.co.uk

NOTES

1. This cylinder is for lifting purposes only and side load conditions should be avoided
2. Cylinder is painted in primer paint to RAL5013
3. Refer to www.edbro.com for:-
 - Bracket details
 - Installation instructions that must be observed
 - Correct oil selection
 - An explanation of tipping capacity



CS180057483B19A11