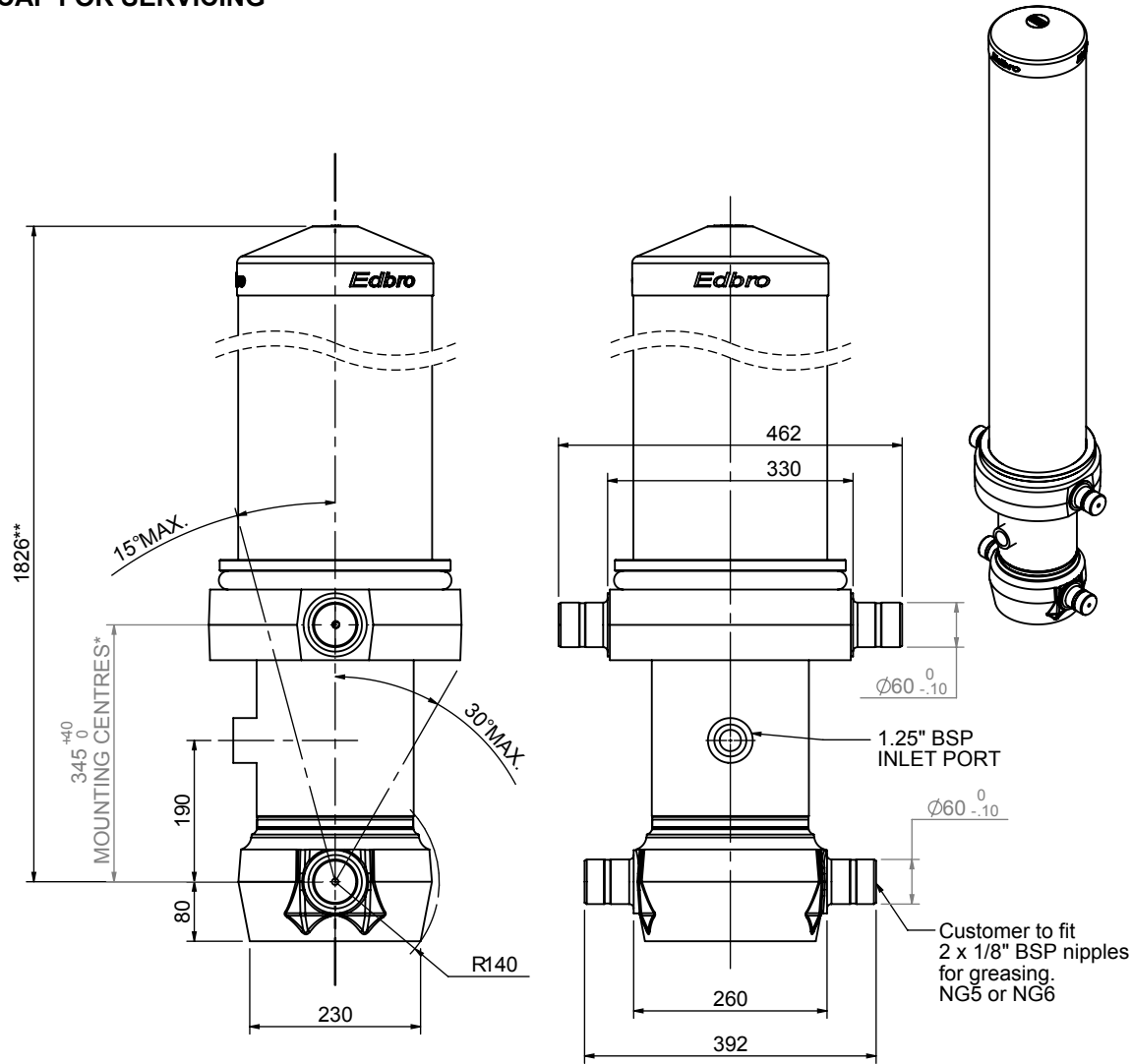


Cylinder 5 stage front end with Outer Cover

****ALLOW 50mm TO REMOVE CAP FOR SERVICING**

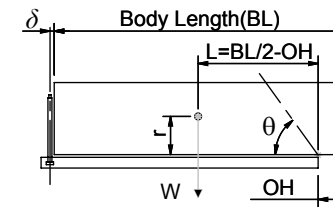


CS180057733B19A11

SPECIFICATION		RATED CAPACITY : 44-58 TONNES***		
Stage	Diameter	Length	Stroke	Swept Volume
OUTER COVER	261	1445	-	-
0	211	1775	-	-
1	188	1740	1514	42
2	167	1740	1537	34
3	147	1740	1547	26
4	127	1740	1562	20
5	105	1740	1567	14
Final stroke reduced by	0	Total (+5/-10)	7727	136
Cylinder Mass (Kg)	389.84	Priming Volume	25	
Rated Pressure (Bar)	175	Total Volume (Litres)	161	
Maximum Pressure (Bar)	175	Max. first stage thrust	260 KN	

***TIPPING CAPACITY AT RATED PRESSURE

d = 229 ; r = 900



BODY LENGTH (BL)						OH
9000		9500		10000		
48	51°	46	48°	44	45°	150
53	52°	49	49°	47	47°	450
58	55°	54	51°	50	48°	750

Tipping angle (θ)
 Body + payload mass, W (tonne)

For guidance only;

Higher Rated Pressures may be possible. To check your application, email Edbro plc at <applications@edbro.co.uk>

NOTES

- If hydraulic pressure is used to limit overloading, the system relief valve must be set to the Rated Pressure unless agreed otherwise by Edbro
- The system relief valve can be set to Maximum Pressure if the load is limited by other means. See RATINGS page for advice
- This cylinder is for lifting purposes only and sload conditions must be avoided
- Cylinder is painted in primer paint to RAL5013
- See bracket options page BRKT01, BRKT02
- See installation instructions INSTALL01
- Use oil according to specification OIL01

*Includes 12mm Pull Out

Edbro
SETTING THE INDUSTRY STANDARD

Edbro plc
Nelson Street, Bolton, Lancashire BL3 2JJ UK
Tel +44 (0) 1204 528888 Fax +44 (0) 1204 531957
Email: postmaster@edbro.com Web: www.edbro.com

Technical Specifications are subject to change without notice
Date Created/Updated: 26 August 2009 13:48:40
Refer www.edbro.com to confirm latest specification
All dimensions are in 'mm', unless otherwise stated