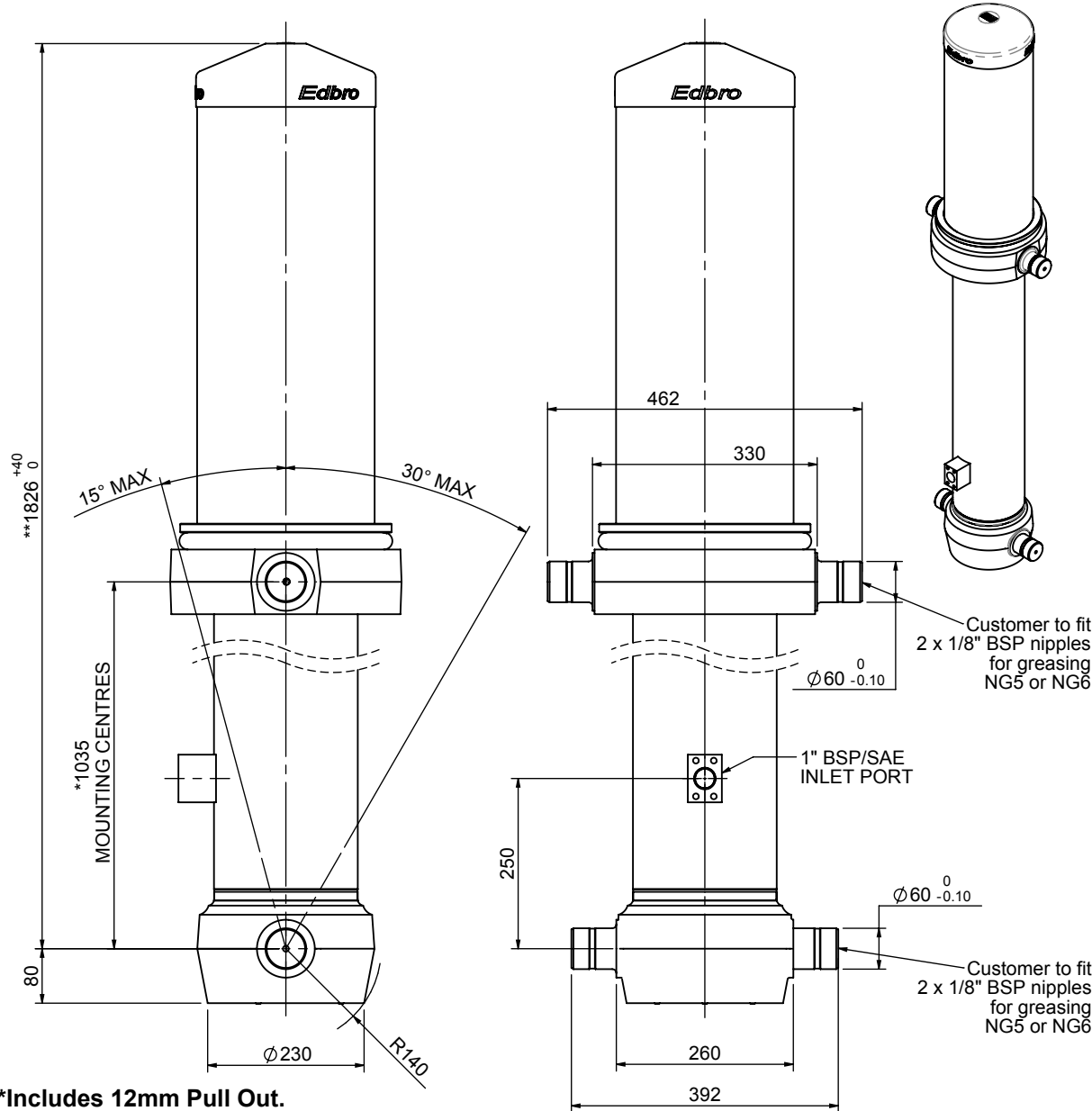


Cylinder 5 stage front end with outer cover

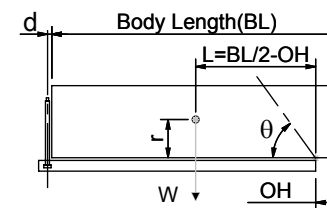
****ALLOW 50mm TO REMOVE CAP FOR SERVICING**



CS180057733S25A15

SPECIFICATION		TIPPING CAPACITY : 41-55 TONNES***		
Stage	Diameter	Length	Stroke	Swept Volume
OUTER COVER	261	755	-	-
0	211	1775	-	-
1	188	1740	1515	42
2	167	1740	1537	34
3	147	1740	1547	26
4	127	1740	1562	20
5	105	1740	1567	14
Total (+5/-10)			7728	136
Final stroke reduced by	0	Priming Volume		24
Cylinder Mass (Kg)	369	Total Volume (Litres)		160
Maximum Pressure (Bar)	190	Max. first stage thrust		265 KN

***TIPPING CAPACITY AT WORKING PRESSURE



BODY LENGTH (BL)						OH
9000	9500	10000				
45	51°	43	48°	41	46°	150
49	53°	46	50°	44	47°	450
55	55°	50	52°	47	49°	750

$d = 229$; $r = 900$; Working Pressure 165 bar

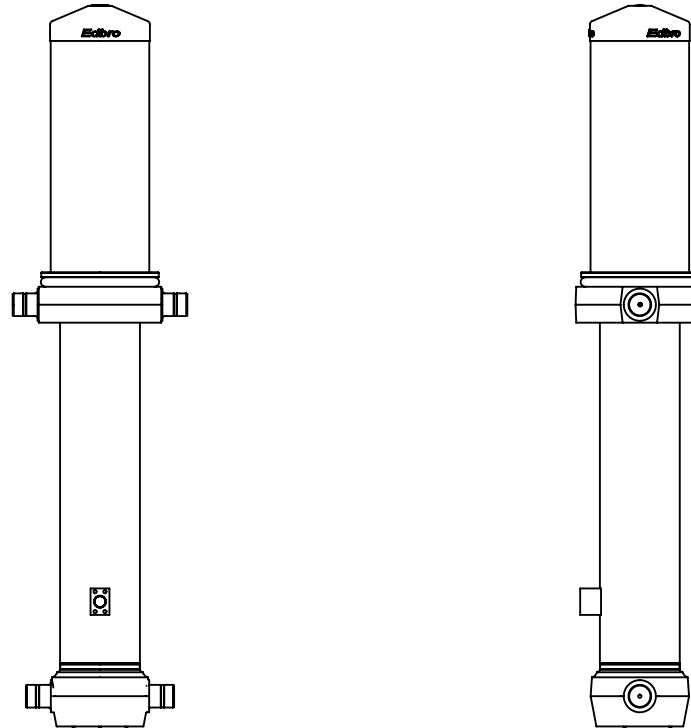
Tipping angle (θ)
Body + payload mass, W (tonne)

For guidance only;

Higher working pressures and tipping capacities may be possible.
To check your application email - applications@edbro.co.uk

NOTES

1. This cylinder is for lifting purposes only and side load conditions should be avoided
2. Cylinder is painted in primer paint to RAL5013
3. Refer to www.edbro.com for:-
 - Bracket details
 - Installation instructions that must be observed
 - Correct oil selection
 - An explanation of tipping capacity



CS180057733S25A15