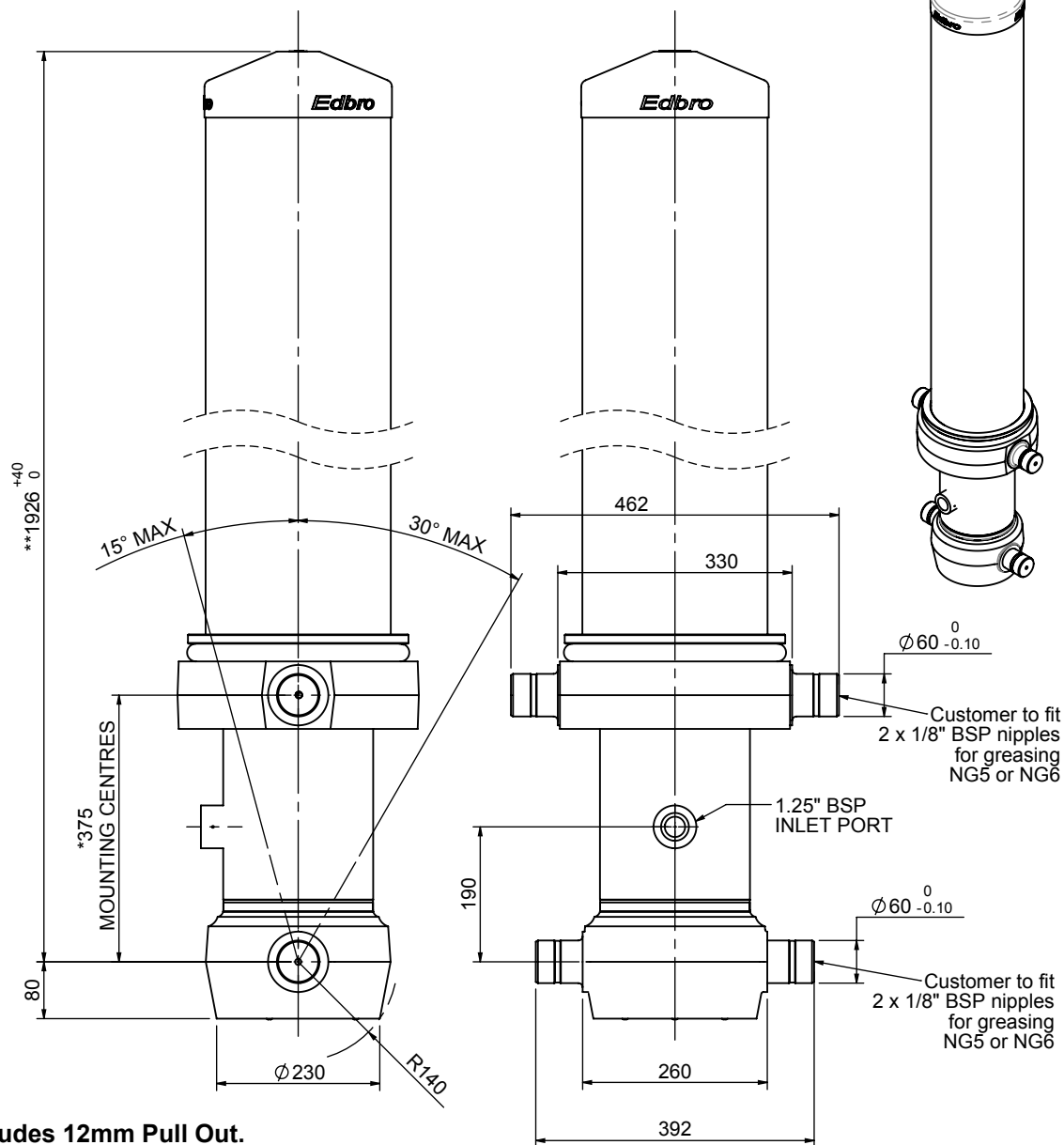


# Cylinder 5 stage front end with outer cover

**\*\*ALLOW 50mm TO REMOVE CAP FOR SERVICING**

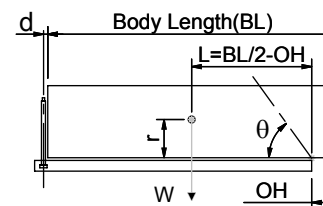


\*Includes 12mm Pull Out.

# CS180058233B19AAH

SPECIFICATION		TIPPING CAPACITY : 44-57 TONNES***		
Stage	Diameter	Length	Stroke	Swept Volume
OUTER COVER	261	1515	-	-
0	211	1875	-	-
1	188	1840	1615	45
2	167	1840	1637	36
3	147	1840	1647	28
4	127	1840	1662	21
5	105	1840	1667	14
Total (+5/-10)			8228	144
Final stroke reduced by	0	Priming Volume		27
Cylinder Mass (Kg)	406	Total Volume (Litres)		171
Maximum Pressure (Bar)	190	Max. first stage thrust		265 KN

## \*\*\*TIPPING CAPACITY AT WORKING PRESSURE



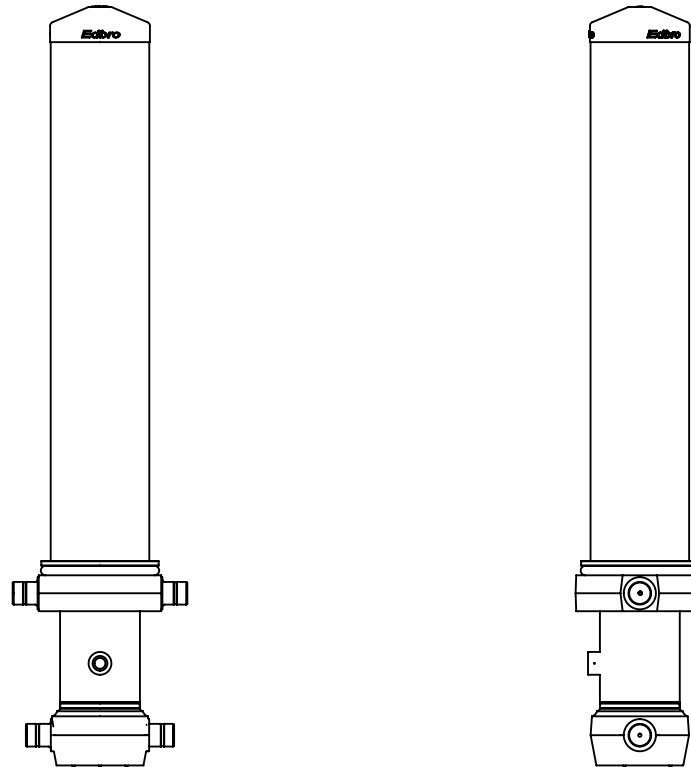
BODY LENGTH (BL)						OH
9500	10000	10500				
48	51°	46	48°	44	46°	150
52	53°	49	50°	47	47°	450
57	55°	53	52°	50	49°	750

$d = 229$ ;  $r = 900$ ; Working Pressure 175 bar  
 Tipping angle ( $\theta$ )  
 Body + payload mass,  $W$  (tonne)

**For guidance only;**  
 Higher working pressures and tipping capacities may be possible.  
 To check your application email - [applications@edbro.co.uk](mailto:applications@edbro.co.uk)

## NOTES

1. This cylinder is for lifting purposes only and side load conditions should be avoided
2. Cylinder is painted in primer paint to RAL5013
3. Refer to [www.edbro.com](http://www.edbro.com) for:-
  - Bracket details
  - Installation instructions that must be observed
  - Correct oil selection
  - An explanation of tipping capacity



CS180058233B19AAH