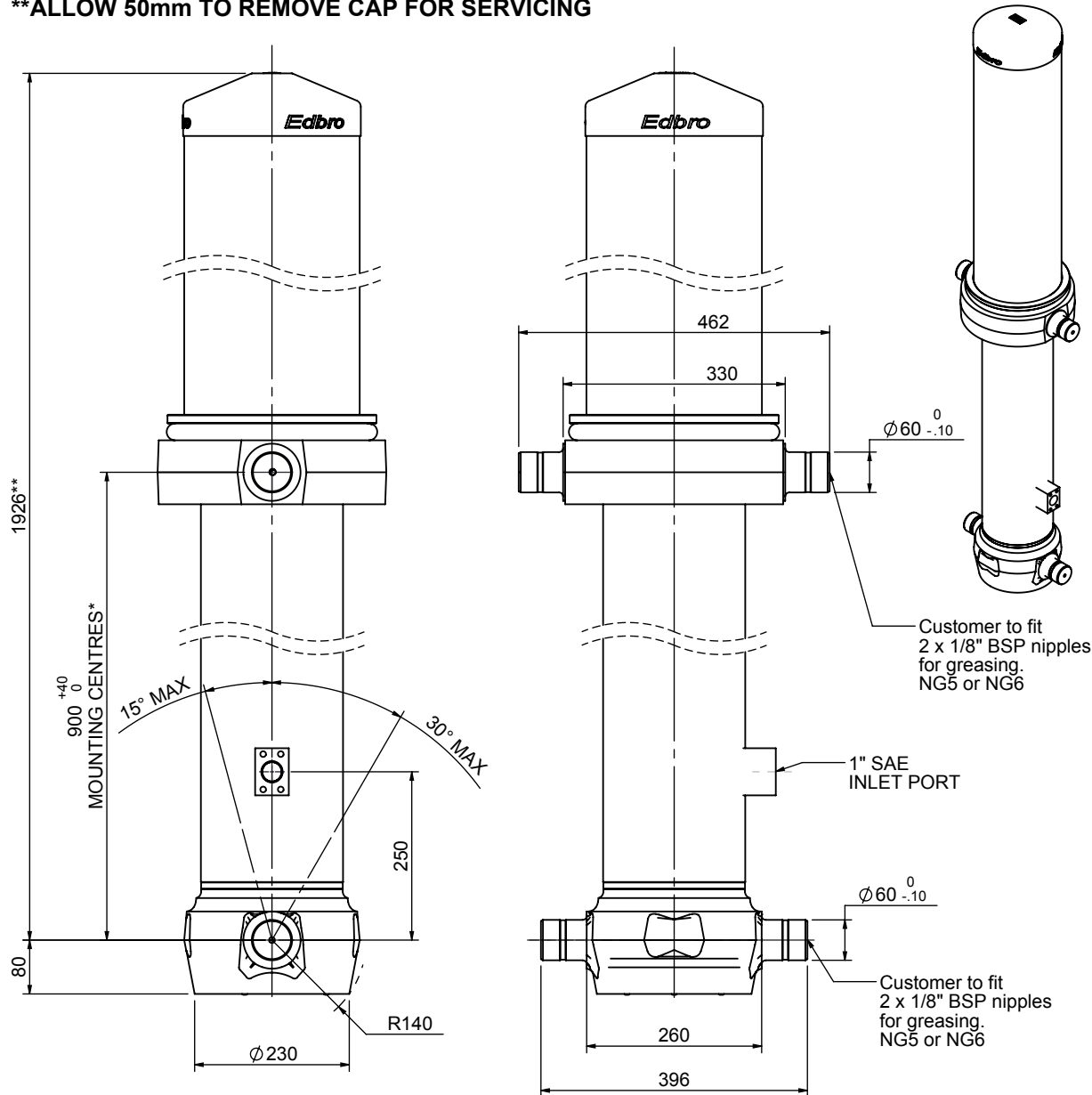


# Cylinder 5 stage front end with outer cover

**\*\*ALLOW 50mm TO REMOVE CAP FOR SERVICING**

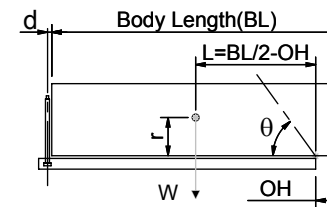


**\*Includes 12mm Pull Out. All Stages Chrome Plated**

# CS180058233R25A14C

SPECIFICATION		TIPPING CAPACITY : 37-49 TONNES***		
Stage	Diameter	Length	Stroke	Swept Volume
OUTER COVER	261	990	-	-
0	211	1875	-	-
1	188	1840	1615	45
2	167	1840	1637	36
3	147	1840	1647	28
4	127	1840	1662	21
5	105	1840	1667	14
Total (+5/-10)			8228	144
Final stroke reduced by	0	Priming Volume		31
Cylinder Mass (Kg)	386	Total Volume (Litres)		175
Maximum Pressure (Bar)	190	Max. first stage thrust		265 KN

## \*\*\*TIPPING CAPACITY AT WORKING PRESSURE



BODY LENGTH (BL)						OH
9500		10000		10500		
41	51°	39	49°	37	46°	150
44	53°	42	50°	40	48°	450
49	55°	45	52°	43	49°	750

d = 229; r = 900; Working Pressure 150 bar

Tipping angle ( $\theta$ )

Body + payload mass, W (tonne)

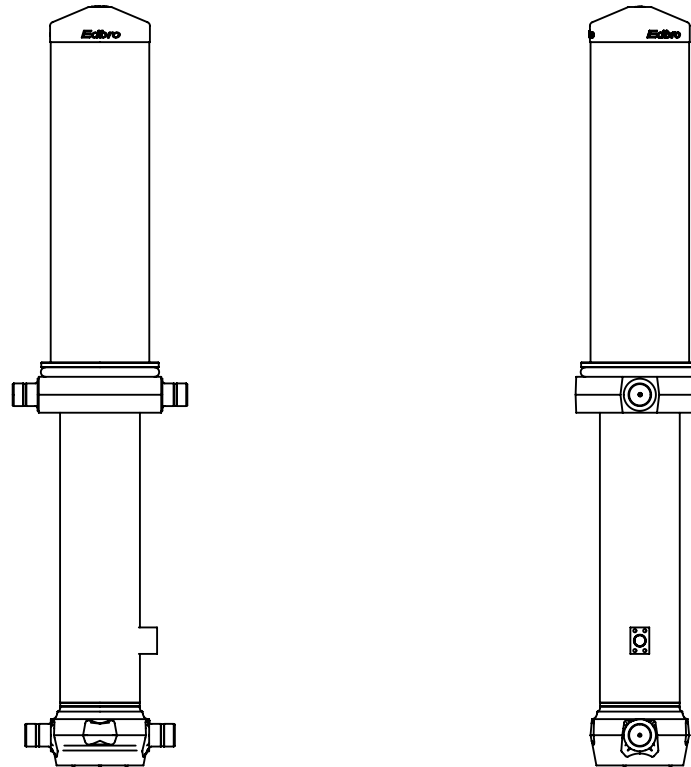
### For guidance only;

Higher working pressures and tipping capacities may be possible.

To check your application email - [applications@edbro.co.uk](mailto:applications@edbro.co.uk)

### NOTES

1. This cylinder is for lifting purposes only and side load conditions should be avoided
2. Cylinder is painted in primer paint to RAL5013
3. Refer to [www.edbro.com](http://www.edbro.com) for:-
  - Bracket details
  - Installation instructions that must be observed
  - Correct oil selection
  - An explanation of tipping capacity



CS180058233R25A14C