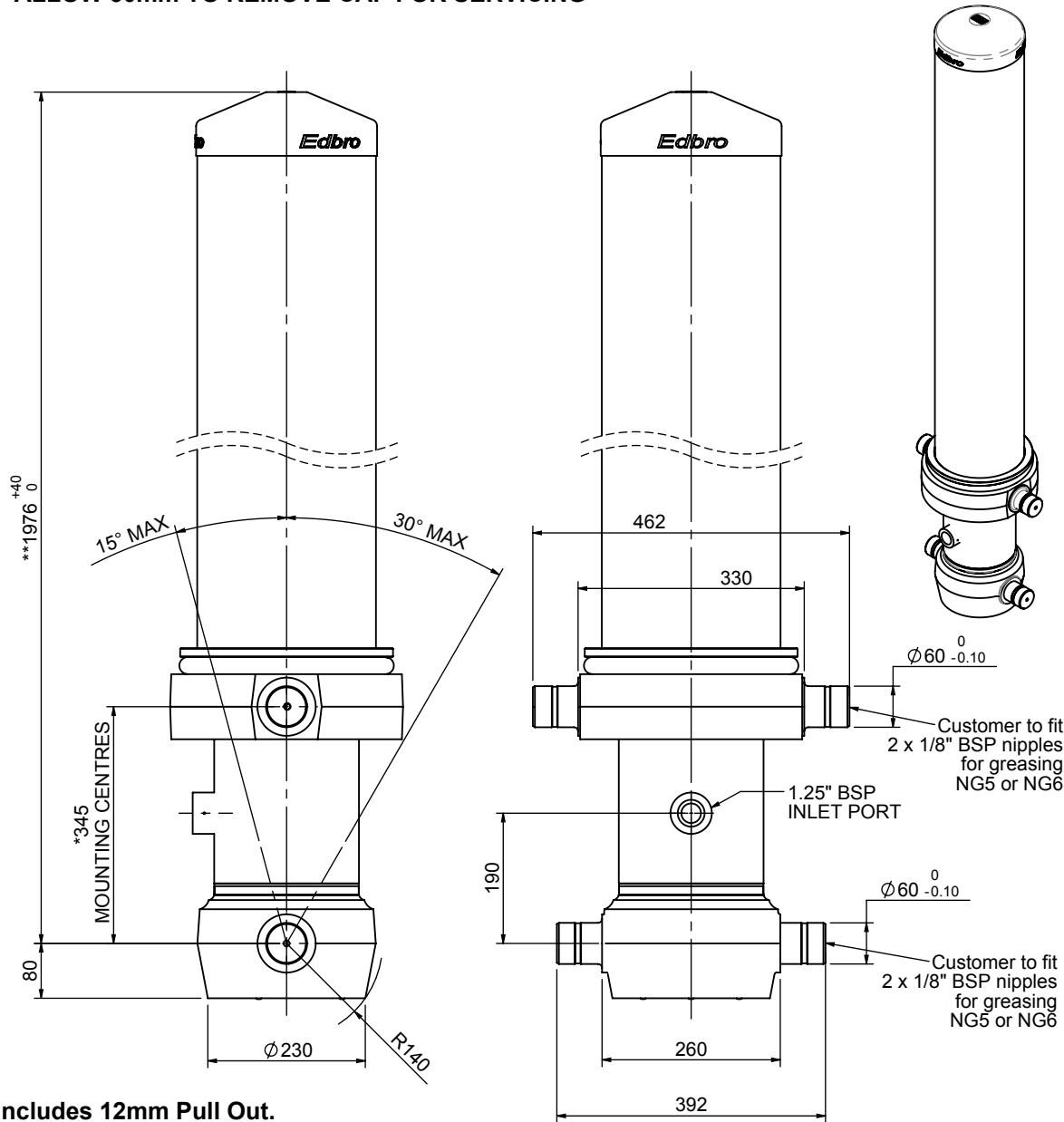


# Cylinder 5 stage front end with outer cover

**\*\*ALLOW 50mm TO REMOVE CAP FOR SERVICING**

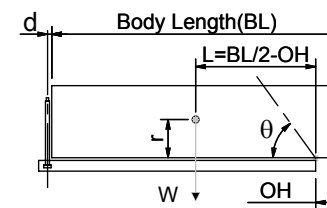


**\*Includes 12mm Pull Out.**

# CS180058483B19A11

SPECIFICATION		TIPPING CAPACITY : 44-57 TONNES***		
Stage	Diameter	Length	Stroke	Swept Volume
OUTER COVER	261	1595	-	-
0	211	1925	-	-
1	188	1890	1665	46
2	167	1890	1687	37
3	147	1890	1697	29
4	127	1890	1712	22
5	105	1890	1717	15
Total (+5/-10)			8478	149
Final stroke reduced by	0	Priming Volume		28
Cylinder Mass (Kg)	416	Total Volume (Litres)		1411
Maximum Pressure (Bar)	190	Max. first stage thrust		265 KN

### \*\*\*TIPPING CAPACITY AT WORKING PRESSURE



BODY LENGTH (BL)					OH	
9750	10250	10750				
48	51°	46	49°	44	46°	150
52	53°	49	50°	47	47°	450
57	55°	53	52°	50	49°	750

$d = 229; r = 900; \text{Working Pressure } 175 \text{ bar}$   
 Tipping angle ( $\theta$ )  
 Body + payload mass, W (tonne)

**For guidance only;**  
 Higher working pressures and tipping capacities may be possible.  
 To check your application email - [applications@edbro.co.uk](mailto:applications@edbro.co.uk)

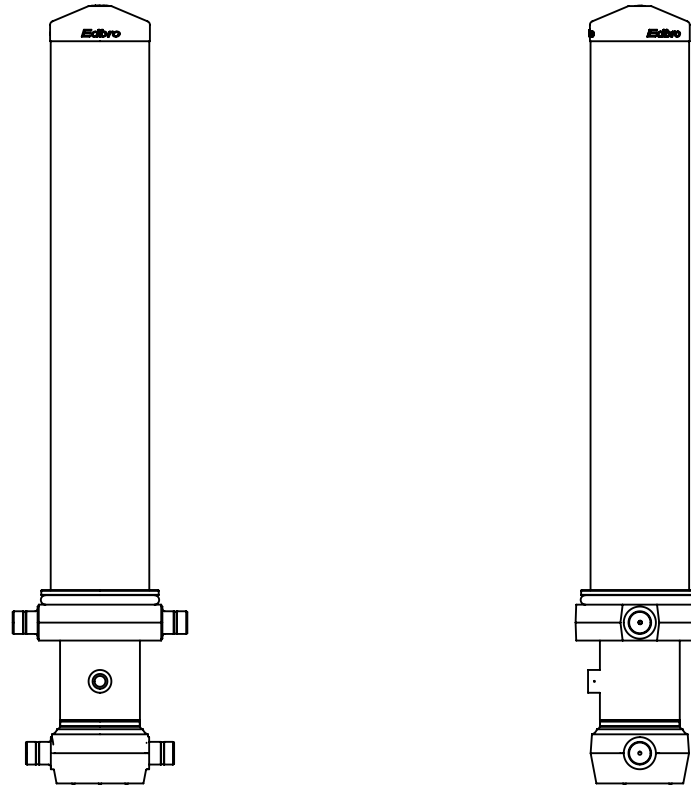
### NOTES

1. This cylinder is for lifting purposes only and side load conditions should be avoided
2. Cylinder is painted in primer paint to RAL5013
3. Refer to [www.edbro.com](http://www.edbro.com) for:-
  - Bracket details
  - Installation instructions that must be observed
  - Correct oil selection
  - An explanation of tipping capacity



**Edbro plc**  
 Nelson Street, Bolton, England, BL3 2JJ  
 Tel +44 (0) 1204 528888 Fax +44 (0) 1204 531957  
 Email: [postmaster@edbro.com](mailto:postmaster@edbro.com) Web: [www.edbro.com](http://www.edbro.com)

Technical Specifications are subject to change without notice  
 Date Created/Updated: 17 August 2012  
 Refer [www.edbro.com](http://www.edbro.com) to confirm latest specification  
 All dimensions are in 'mm', unless otherwise stated



CS180058483B19A11