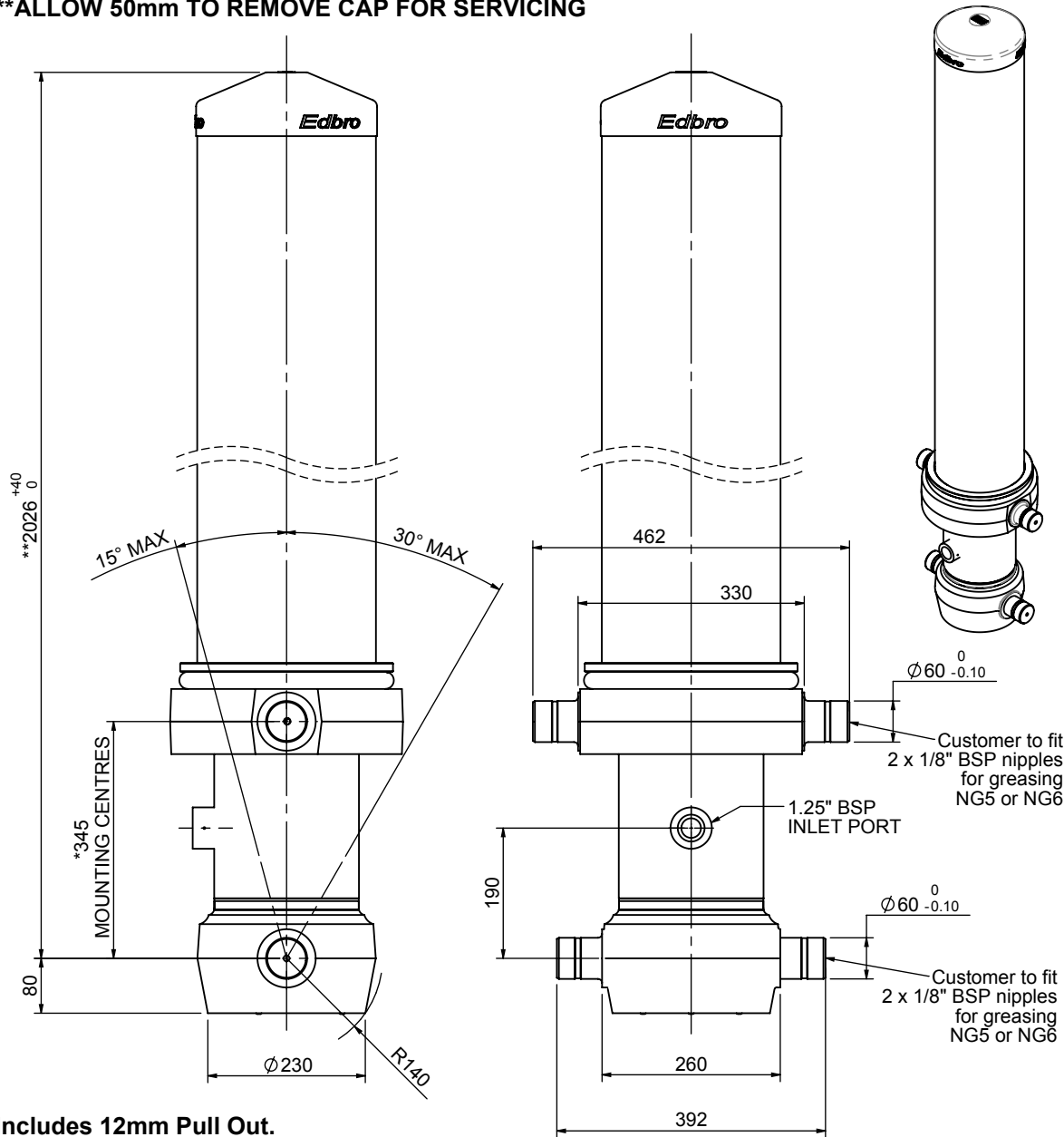


Cylinder 5 stage front end with outer cover

****ALLOW 50mm TO REMOVE CAP FOR SERVICING**

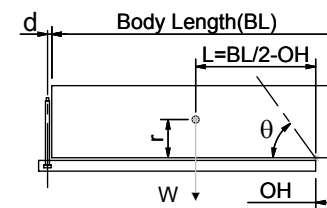


*Includes 12mm Pull Out.

CS180058733B19A11

SPECIFICATION		TIPPING CAPACITY : 38-48 TONNES***		
Stage	Diameter	Length	Stroke	Swept Volume
OUTER COVER	261	1645	-	-
0	211	1975	-	-
1	188	1940	1715	48
2	167	1940	1737	38
3	147	1940	1747	30
4	127	1940	1762	22
5	105	1940	1767	15
Total (+5/-10)			8728	153
Final stroke reduced by	0	Priming Volume		28
Cylinder Mass (Kg)	425	Total Volume (Litres)		181
Maximum Pressure (Bar)	190	Max. first stage thrust		265 KN

***TIPPING CAPACITY AT WORKING PRESSURE



BODY LENGTH (BL)						OH
10000	10500	11000				
41	52°	39	49°	38	47°	150
44	53°	42	50°	40	48°	450
48	55°	45	52°	42	49°	750

$d = 229$; $r = 900$; Working Pressure 150 bar

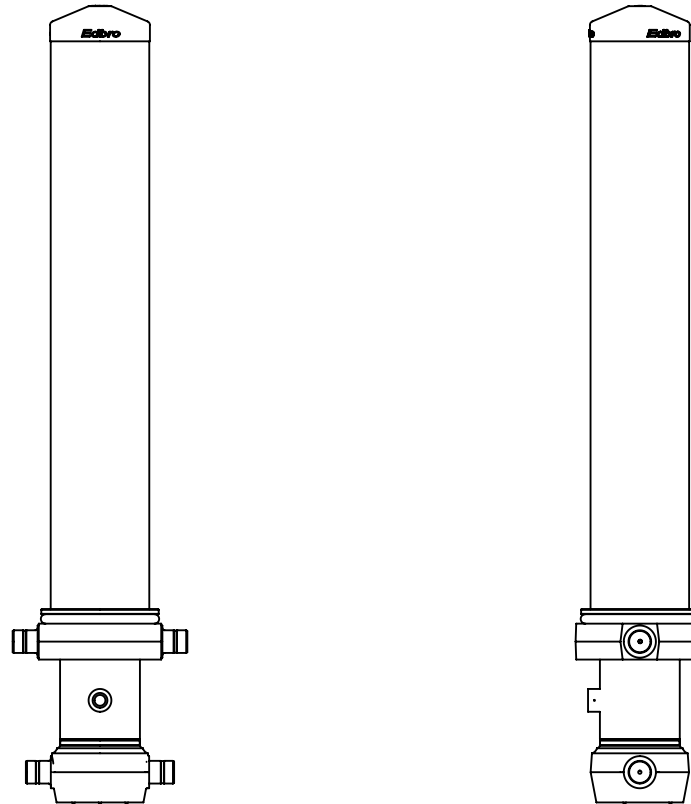
For guidance only;

Higher working pressures and tipping capacities may be possible.

To check your application email - applications@edbro.co.uk

NOTES

1. This cylinder is for lifting purposes only and side load conditions should be avoided
2. Cylinder is painted in primer paint to RAL5013
3. Refer to www.edbro.com for:-
 - Bracket details
 - Installation instructions that must be observed
 - Correct oil selection
 - An explanation of tipping capacity



CS180058733B19A11