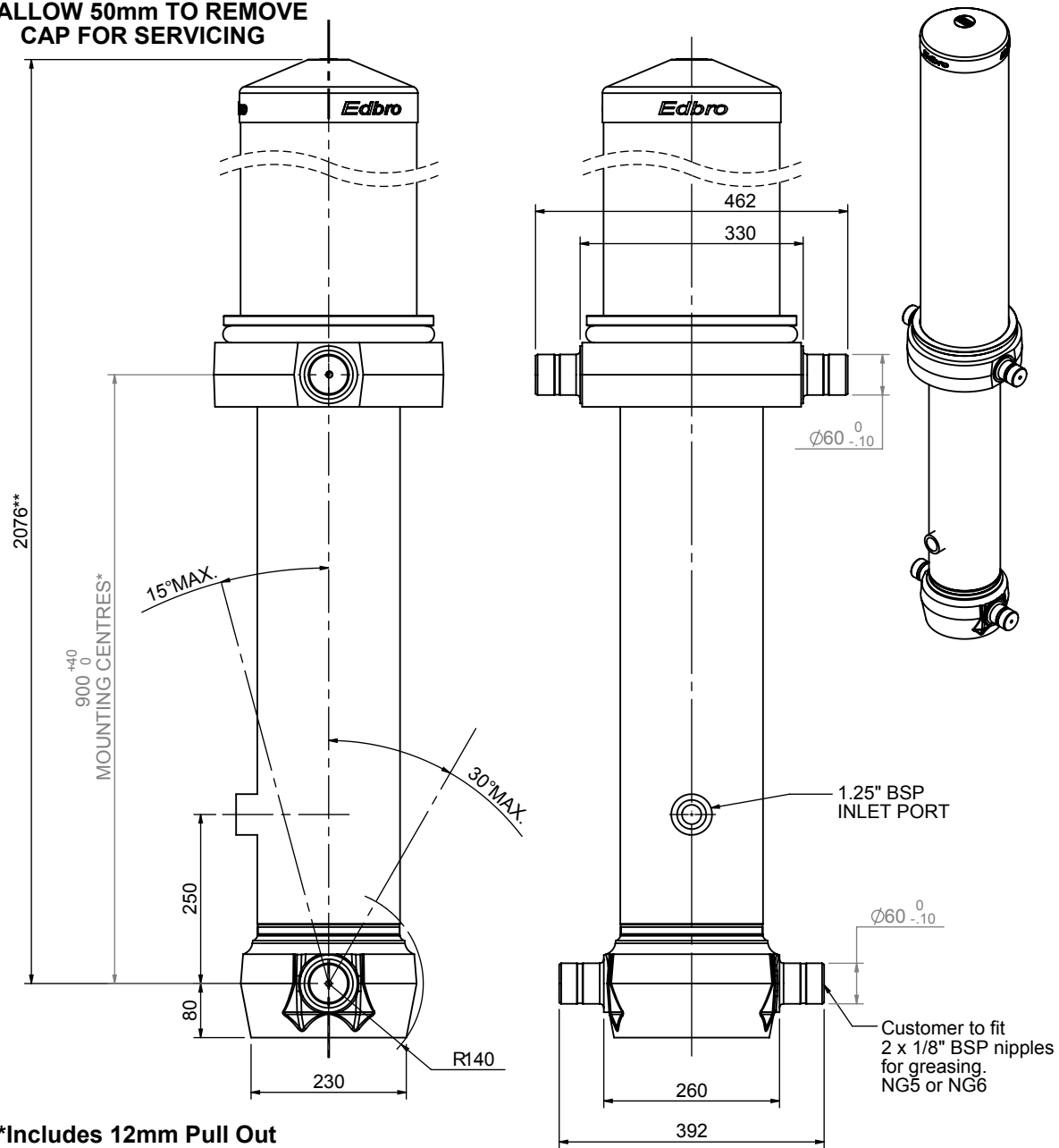


Cylinder 5 stage front end with Outer Cover

****ALLOW 50mm TO REMOVE CAP FOR SERVICING**



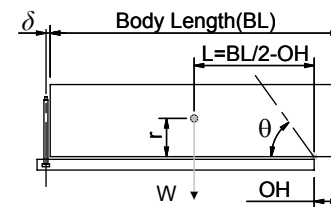
*Includes 12mm Pull Out

CS180058983B25A14

SPECIFICATION		RATED CAPACITY : 28-34 TONNES***		
Stage	Diameter	Length	Stroke	Swept Volume
OUTER COVER	261	1140	-	-
0	211	2025	-	-
1	188	1990	1764	49
2	167	1990	1787	39
3	147	1990	1797	31
4	127	1990	1812	23
5	105	1990	1817	16
Final stroke reduced by	0	Total (+5/-10)	8977	158
Cylinder Mass (Kg)	418.59	Priming Volume	29	
Rated Pressure (Bar)	120	Total Volume (Litres)	187	
Maximum Pressure (Bar)	175	Max. first stage thrust	260 KN	

***TIPPING CAPACITY AT RATED PRESSURE

d = 229 ; r = 900



BODY LENGTH (BL)						OH
11000	11500	12000				
30	48°	29	46°	28	44°	150
32	50°	31	47°	30	45°	450
34	51°	33	49°	32	46°	750

— Tipping angle (θ)
— Body + payload mass, W (tonne)

For guidance only;

Higher Rated Pressures may be possible. To check your application, email Edbro plc at <applications@edbro.co.uk>

NOTES

- If hydraulic pressure is used to limit overloading, the system relief valve must be set to the Rated Pressure unless agreed otherwise by Edbro
- The system relief valve can be set to Maximum Pressure if the load is limited by other means. See RATINGS page for advice
- This cylinder is for lifting purposes only and sload conditions must be avoided
- Cylinder is painted in primer paint to RAL5013
- See bracket options page BRKT01, BRKT02
- See installation instructions INSTALL01
- Use oil according to specification OIL01