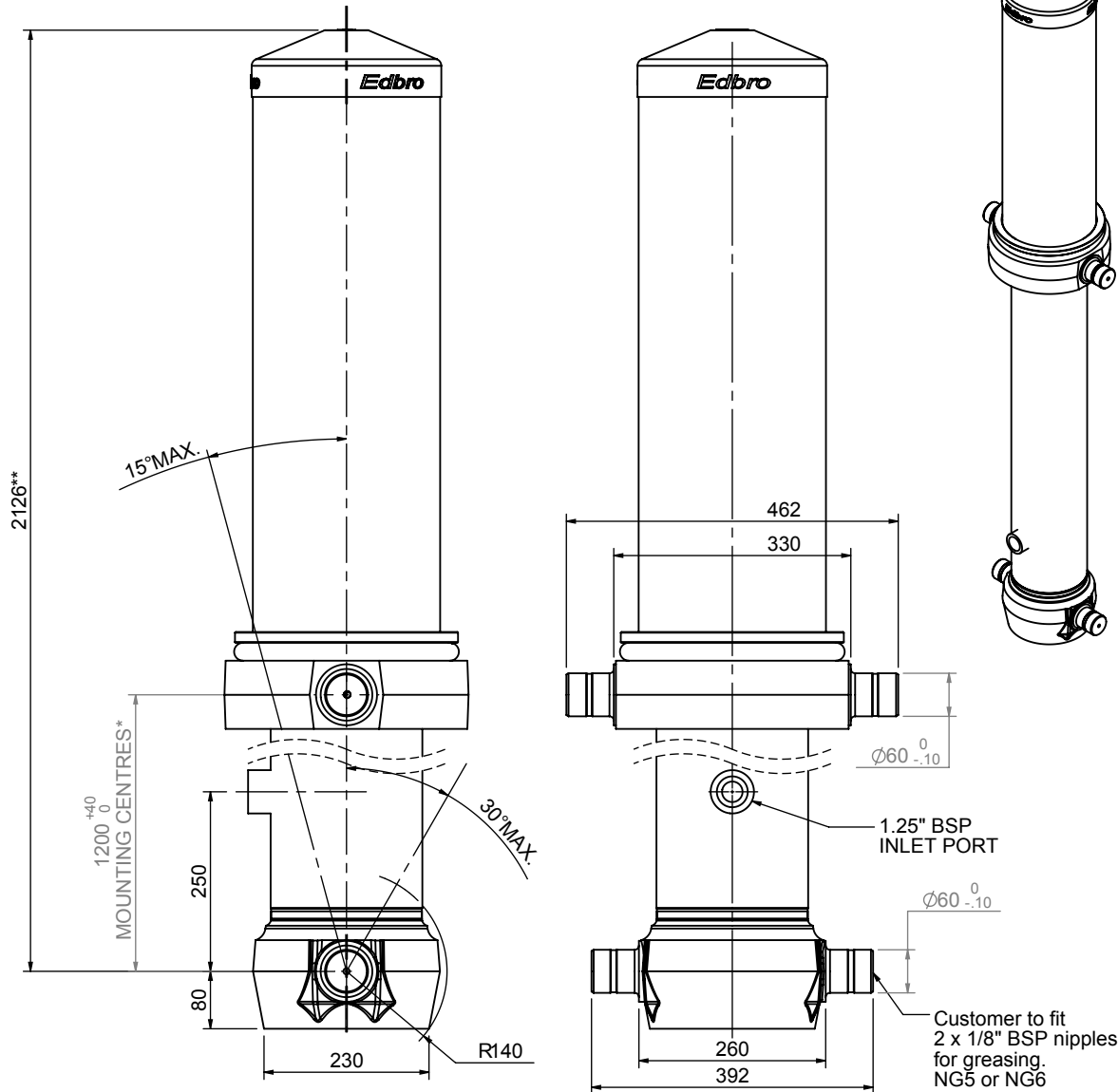


Cylinder 5 stage front end with Outer Cover

****ALLOW 50mm TO REMOVE CAP FOR SERVICING**



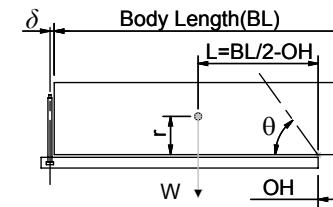
***Includes 12mm pull out**

CS180059233B25A16

| SPECIFICATION | | RATED CAPACITY : 27-31 TONNES*** | | |
|-------------------------|----------|----------------------------------|--------|--------------|
| Stage | Diameter | Length | Stroke | Swept Volume |
| OUTER COVER | 261 | 890 | - | - |
| 0 | 211 | 2075 | - | - |
| 1 | 188 | 2040 | 1814 | 50 |
| 2 | 167 | 2040 | 1837 | 40 |
| 3 | 147 | 2040 | 1847 | 31 |
| 4 | 127 | 2040 | 1862 | 24 |
| 5 | 105 | 2040 | 1867 | 16 |
| Final stroke reduced by | 0 | Total (+5/-10) | 9227 | 161 |
| Cylinder Mass (Kg) | 418.71 | Priming Volume | 30 | |
| Rated Pressure (Bar) | 110 | Total Volume (Litres) | 191 | |
| Maximum Pressure (Bar) | 175 | Max. first stage thrust | 260 KN | |

***TIPPING CAPACITY AT RATED PRESSURE

$d = 229 ; r = 900$



| | | BODY LENGTH (BL) | | | | OH |
|----|-----|------------------|-------|-------|-----|-----|
| | | 11500 | 12000 | 12500 | | |
| 27 | 47° | | | | | 150 |
| 29 | 49° | 28 | 47° | | | 450 |
| 31 | 50° | 29 | 48° | 28 | 46° | 750 |

For guidance only;

Higher Rated Pressures may be possible. To check your application, email Edbro plc at <applications@edbro.co.uk>

NOTES

- If hydraulic pressure is used to limit overloading, the system relief valve must be set to the Rated Pressure unless agreed otherwise by Edbro
- The system relief valve can be set to Maximum Pressure if the load is limited by other means. See RATINGS page for advice
- This cylinder is for lifting purposes only and sload conditions must be avoided
- Cylinder is painted in primer paint to RAL5013
- See bracket options page BRKT01, BRKT02
- See installation instructions INSTALL01
- Use oil according to specification OIL01

Edbro
SETTING THE INDUSTRY STANDARD

Edbro plc
Nelson Street, Bolton, Lancashire BL3 2JJ UK
Tel +44 (0) 1204 528888 Fax +44 (0) 1204 531957
Email: postmaster@edbro.com Web: www.edbro.com

Technical Specifications are subject to change without notice
Date Created/Updated: 26 August 2009 14:23:54
Refer www.edbro.com to confirm latest specification
All dimensions are in 'mm', unless otherwise stated