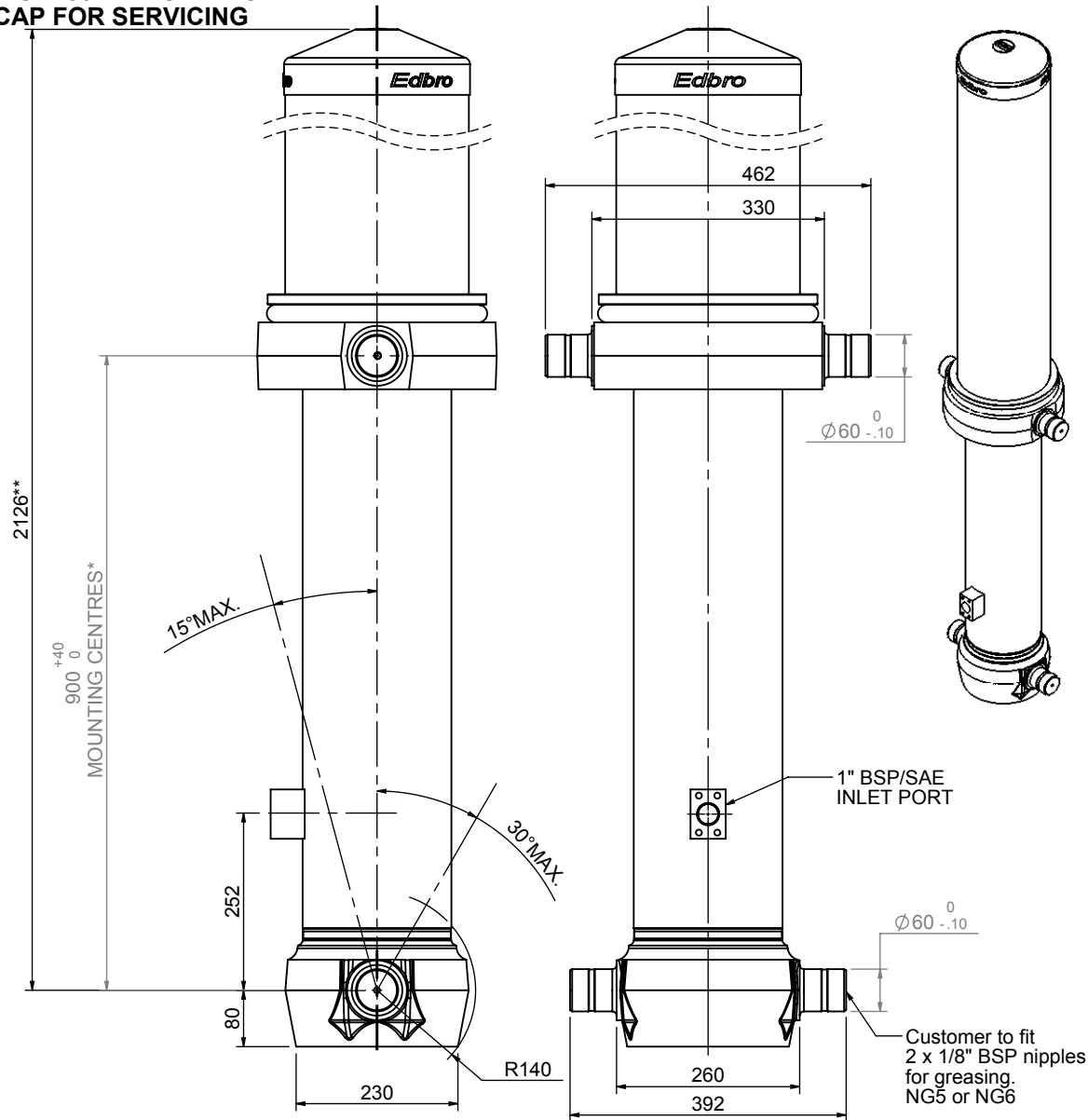


Cylinder 5 stage front end with Outer Cover

****ALLOW 50mm TO REMOVE CAP FOR SERVICING**



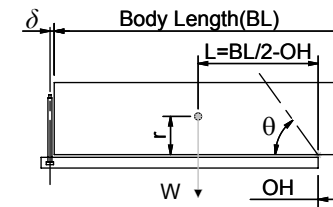
***Includes 12mm Pull Out
All Stages Chrome Plated**

CS180059233S25A14C

| SPECIFICATION | | RATED CAPACITY : 30-33 TONNES*** | | |
|-------------------------|----------|----------------------------------|--------|--------------|
| Stage | Diameter | Length | Stroke | Swept Volume |
| OUTER COVER | 261 | 1190 | - | - |
| 0 | 211 | 2075 | - | - |
| 1 | 188 | 2040 | 1814 | 50 |
| 2 | 167 | 2040 | 1837 | 40 |
| 3 | 147 | 2040 | 1847 | 31 |
| 4 | 127 | 2040 | 1862 | 24 |
| 5 | 105 | 2040 | 1867 | 16 |
| Final stroke reduced by | 0 | Total (+5/-10) | 9227 | 161 |
| Cylinder Mass (Kg) | 427.57 | Priming Volume | 30 | |
| Rated Pressure (Bar) | 120 | Total Volume (Litres) | 191 | |
| Maximum Pressure (Bar) | 175 | Max. first stage thrust | 260 KN | |

***TIPPING CAPACITY AT RATED PRESSURE

$d = 229 ; r = 900$



| | | BODY LENGTH (BL) | | | | OH |
|----|-----|------------------|-------|-------|-----|-----|
| | | 11500 | 12000 | 12500 | | |
| 30 | 47° | | | | 150 | |
| 31 | 49° | 30 | 46° | | 450 | |
| 33 | 50° | 32 | 48° | 31 | 46° | 750 |

For guidance only;

Higher Rated Pressures may be possible. To check your application, email Edbro plc at <applications@edbro.co.uk>

NOTES

- If hydraulic pressure is used to limit overloading, the system relief valve must be set to the Rated Pressure unless agreed otherwise by Edbro
- The system relief valve can be set to Maximum Pressure if the load is limited by other means. See RATINGS page for advice
- This cylinder is for lifting purposes only and sload conditions must be avoided
- Cylinder is painted in primer paint to RAL5013
- See bracket options page BRKT01, BRKT02
- See installation instructions INSTALL01
- Use oil according to specification OIL01