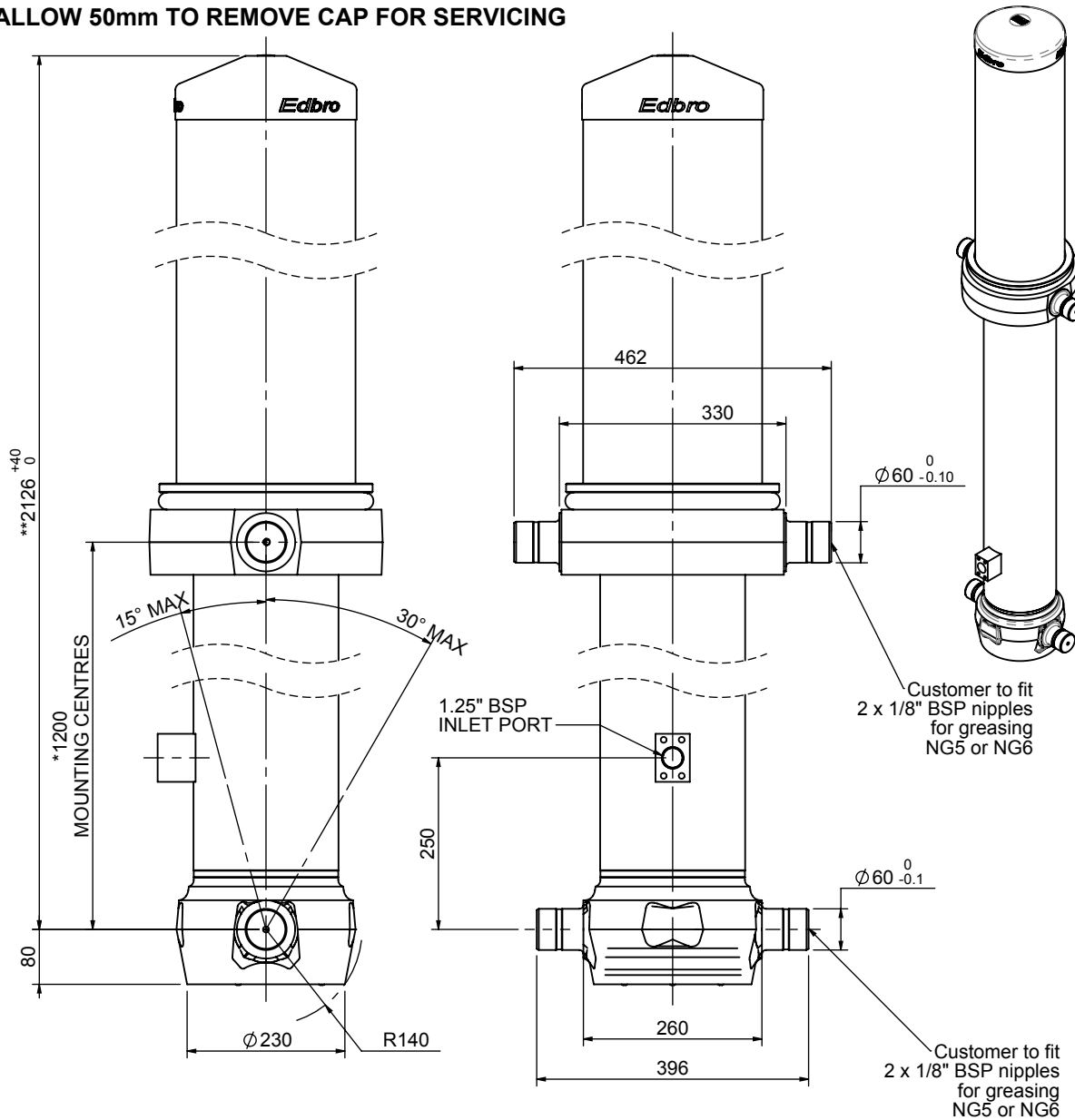


Cylinder 5 stage front end with outer cover

****ALLOW 50mm TO REMOVE CAP FOR SERVICING**

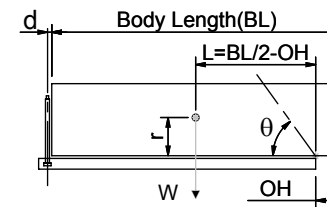


*Includes 12mm Pull Out.

CS180059233S25A16

SPECIFICATION		TIPPING CAPACITY : 27-31 TONNES***		
Stage	Diameter	Length	Stroke	Swept Volume
OUTER COVER	261	890	-	-
0	211.2	2075	-	-
1	188	2040	1815	50
2	167	2040	1837	40
3	147	2040	1847	31
4	127	2040	1862	24
5	105	2040	1867	16
Total (+5/-10)			9228	161
Final stroke reduced by	0	Priming Volume		30
Cylinder Mass (Kg)	414	Total Volume (Litres)		191
Maximum Pressure (Bar)	190	Max. first stage thrust		265 KN

***TIPPING CAPACITY AT WORKING PRESSURE



BODY LENGTH (BL)						OH
11500	12000	12500				
27	47°	26	45°	26	43°	150
29	49°	28	47°	27	45°	450
31	50°	29	48°	28	46°	750

d = 229; r = 900; Working Pressure 110 bar

Tipping angle (θ)

Body + payload mass, W (tonne)

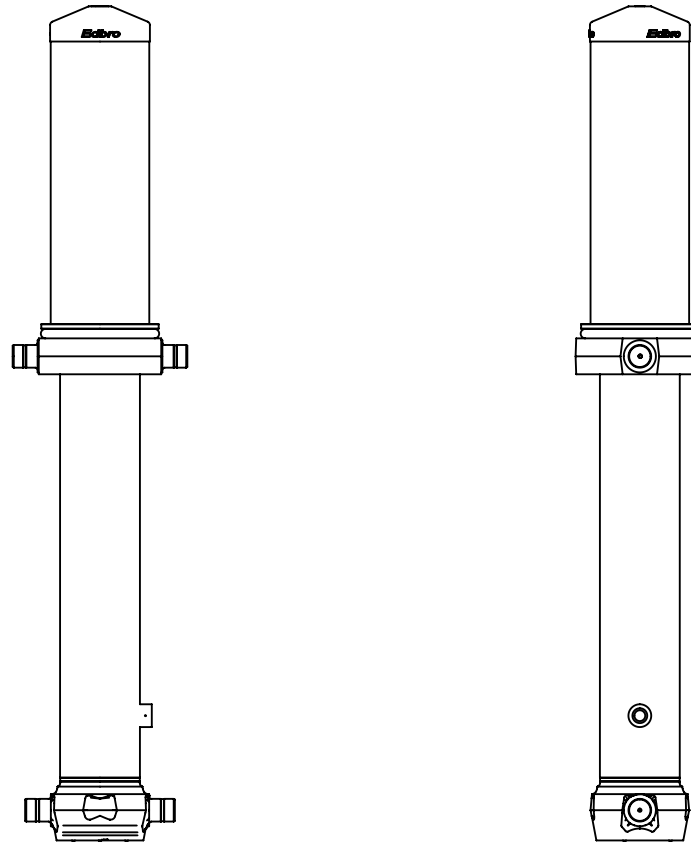
For guidance only;

Higher working pressures and tipping capacities may be possible.

To check your application email - applications@edbro.co.uk

NOTES

1. This cylinder is for lifting purposes only and side load conditions should be avoided
2. Cylinder is painted in primer paint to RAL5013
3. Refer to www.edbro.com for:-
 - Bracket details
 - Installation instructions that must be observed
 - Correct oil selection
 - An explanation of tipping capacity



CS180059233N25A16