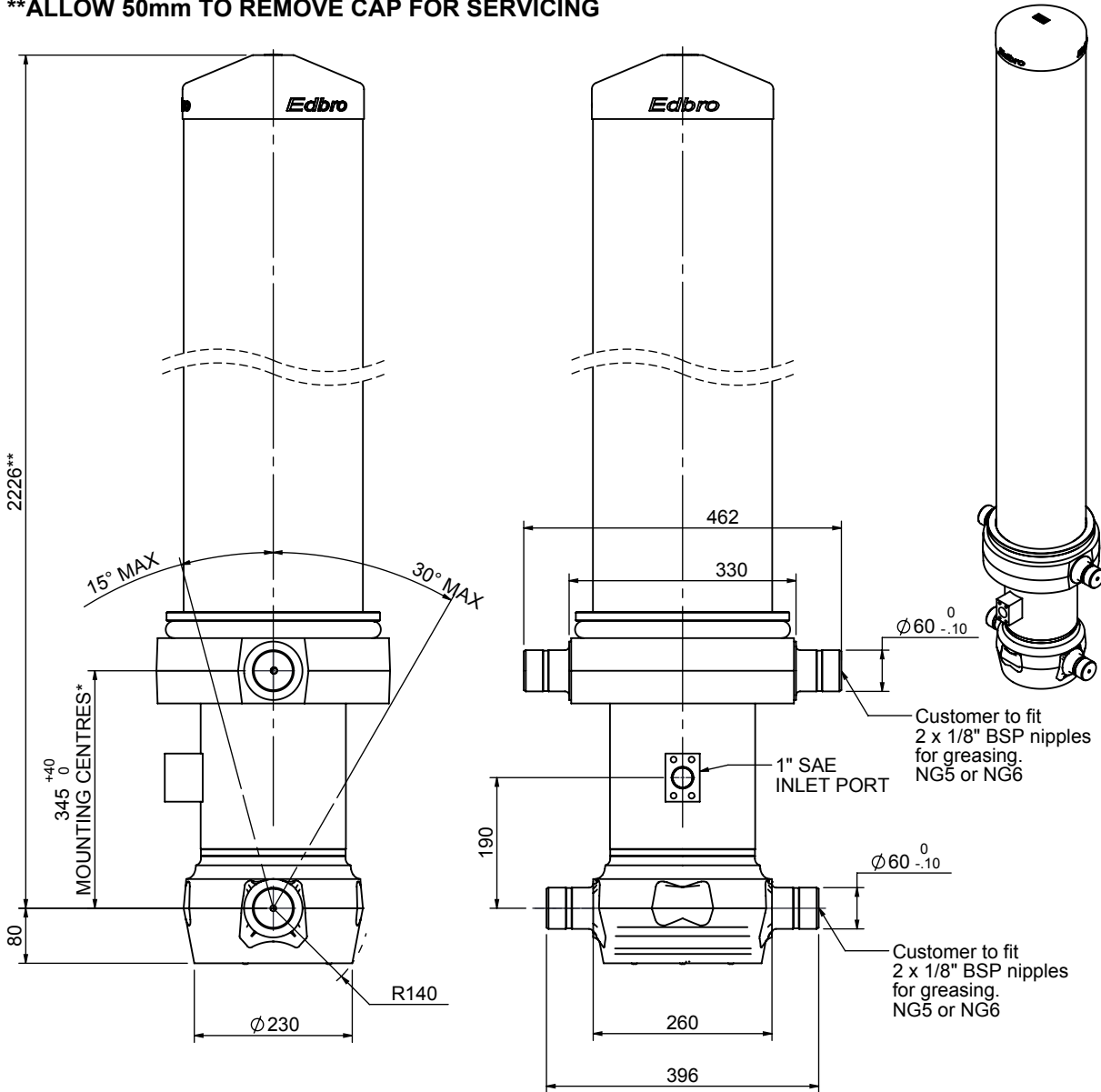


Cylinder 5 stage front end with outer cover

****ALLOW 50mm TO REMOVE CAP FOR SERVICING**

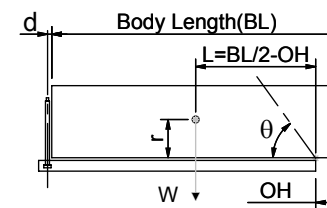


*Includes 12mm Pull Out.

CS180059733S19A11

SPECIFICATION		TIPPING CAPACITY : 33-41 TONNES***		
Stage	Diameter	Length	Stroke	Swept Volume
OUTER COVER	261	1845	-	-
0	211	2175	-	-
1	188	2140	1915	53
2	167	2140	1937	42
3	147	2140	1947	33
4	127	2140	1962	25
5	105	2140	1967	17
Total (+5/-10)			9728	170
Final stroke reduced by	0	Priming Volume		36.5
Cylinder Mass (Kg)	456	Total Volume (Litres)		206.5
Maximum Pressure (Bar)	190	Max. first stage thrust		265 KN

***TIPPING CAPACITY AT WORKING PRESSURE



BODY LENGTH (BL)						OH
10500	11000	11500				
36	50°	34	48°	33	46°	150
38	52°	36	50°	35	47°	450
41	54°	39	51°	37	49°	750

d = 229; r = 900; Working Pressure 135 bar

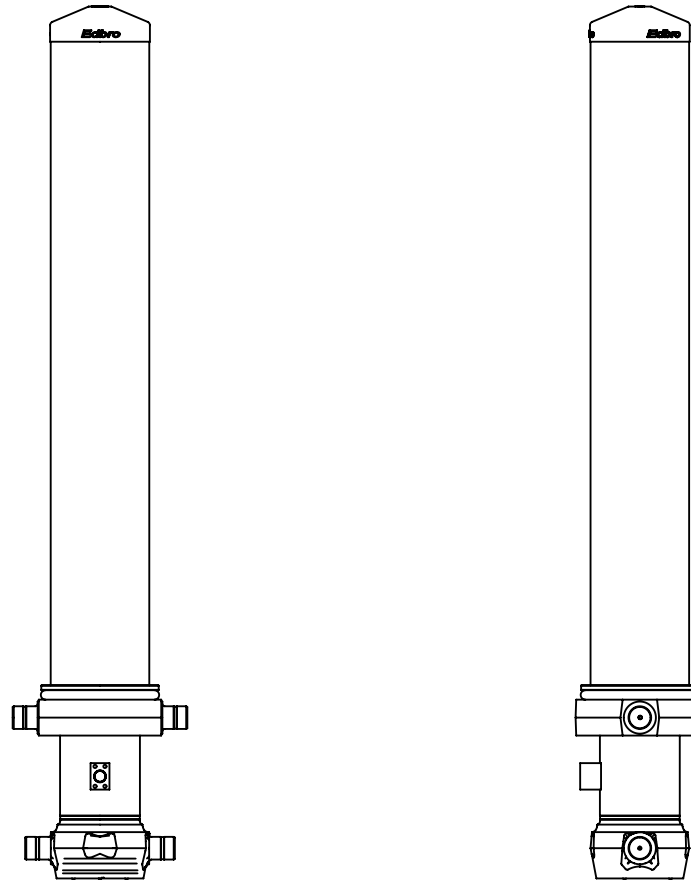
For guidance only;

Higher working pressures and tipping capacities may be possible.

To check your application email - applications@edbro.co.uk

NOTES

1. This cylinder is for lifting purposes only and side load conditions should be avoided
2. Cylinder is painted in primer paint to RAL5013
3. Refer to www.edbro.com for:-
 - Bracket details
 - Installation instructions that must be observed
 - Correct oil selection
 - An explanation of tipping capacity



CS180059733S19A11