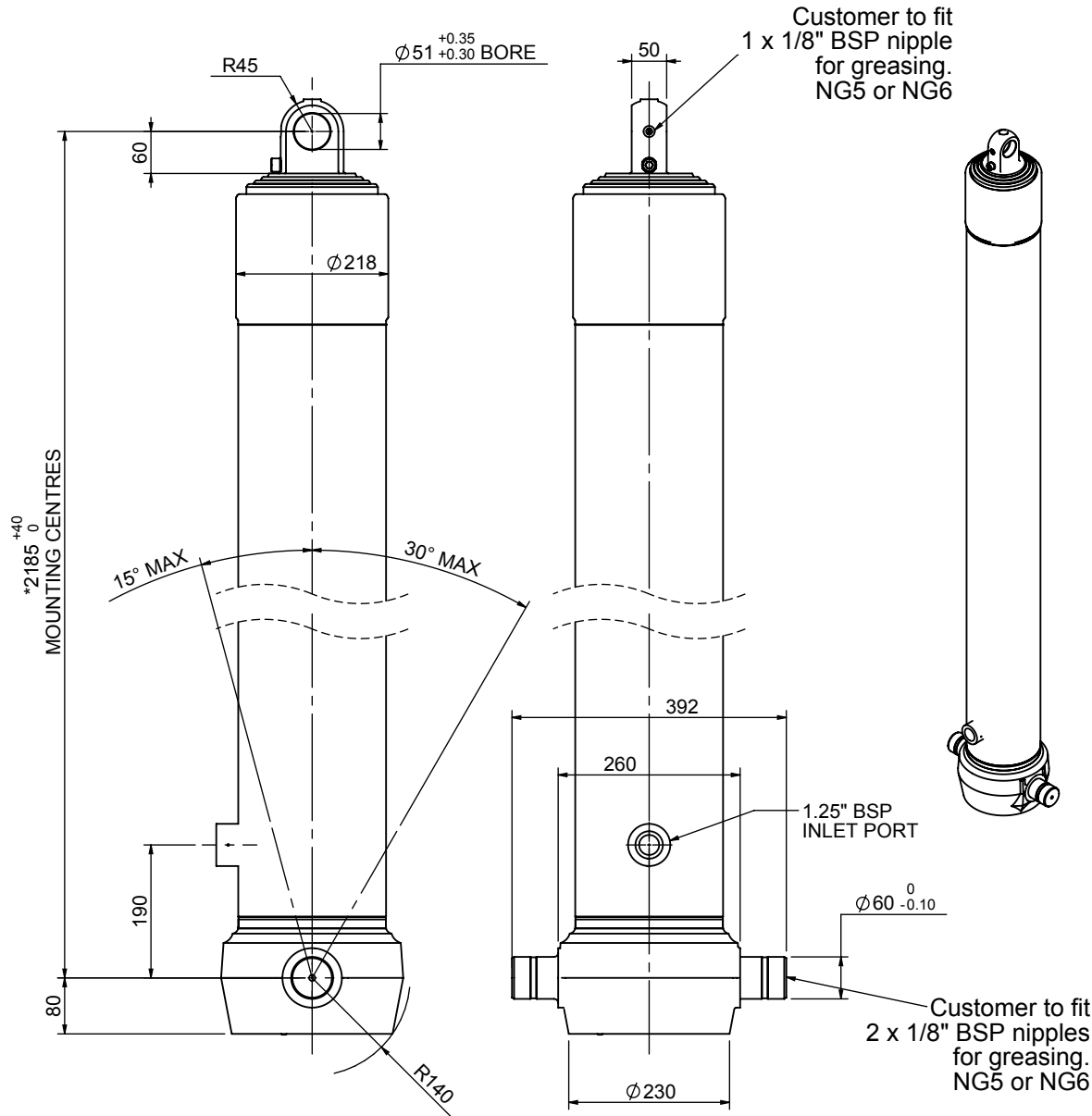


Cylinder 4 stage front end with plain eye

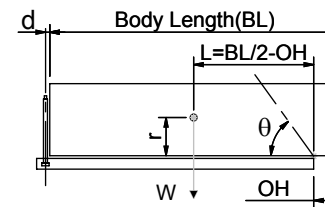


*Includes 9 mm Pull Out.
Last Stage Chrome Plated

CS180E47766B19A01

| SPECIFICATION | | TIPPING CAPACITY : 29-34 TONNES*** | | |
|-------------------------|----------|------------------------------------|--------|--------------|
| Stage | Diameter | Length | Stroke | Swept Volume |
| - | - | - | - | - |
| - | - | - | - | - |
| 0 | 211 | 2175 | - | - |
| 1 | 188 | 2140 | 1918 | 53 |
| 2 | 167 | 2140 | 1937 | 42 |
| 3 | 147 | 2140 | 1947 | 33 |
| 4 | 127 | 2140 | 1962 | 25 |
| Total (+5/-10) | | | 9382 | 153 |
| Final stroke reduced by | 0 | Priming Volume | | 36 |
| Cylinder Mass (Kg) | 328 | Total Volume (Litres) | | 189 |
| Maximum Pressure (Bar) | 190 | Max. first stage thrust | | 265 KN |

***TIPPING CAPACITY AT WORKING PRESSURE



| BODY LENGTH (BL) | | | | | | OH |
|------------------|-------|-------|-----|----|-----|-----|
| 10000 | 10500 | 11000 | | | | |
| 30 | 47° | 29 | 45° | 29 | 43° | 150 |
| 32 | 49° | 31 | 46° | 30 | 44° | 450 |
| 34 | 51° | 33 | 48° | 32 | 45° | 750 |

d = 0; r = 750; Working Pressure 90 bar

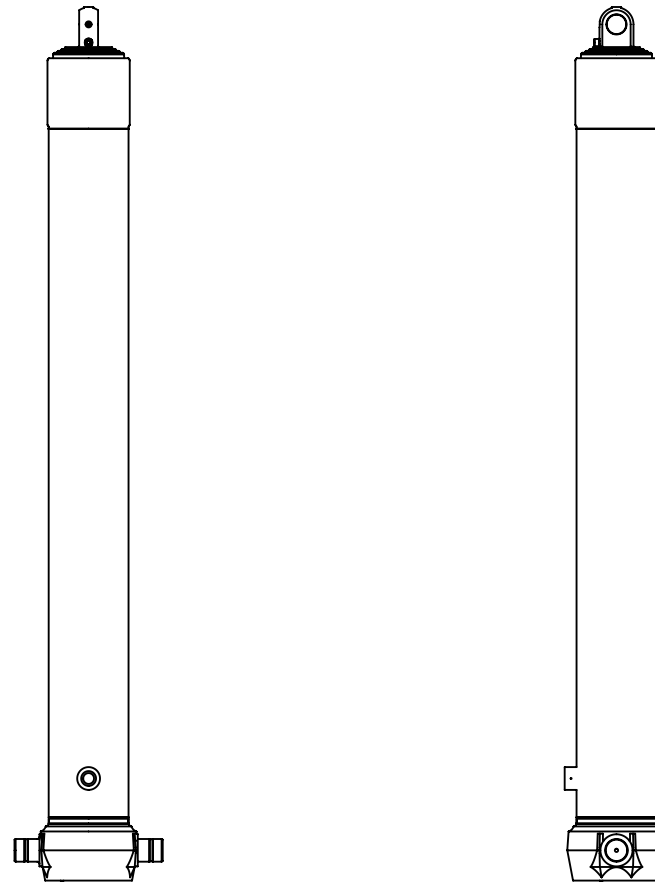
For guidance only;

Higher working pressures and tipping capacities may be possible.

To check your application email - applications@edbro.co.uk

NOTES

1. This cylinder is for lifting purposes only and side load conditions should be avoided
2. Cylinder is painted in primer paint to RAL5013
3. Refer to www.edbro.com for:-
 - Bracket details
 - Installation instructions that must be observed
 - Correct oil selection
 - An explanation of tipping capacity



CS180E47766B19A01