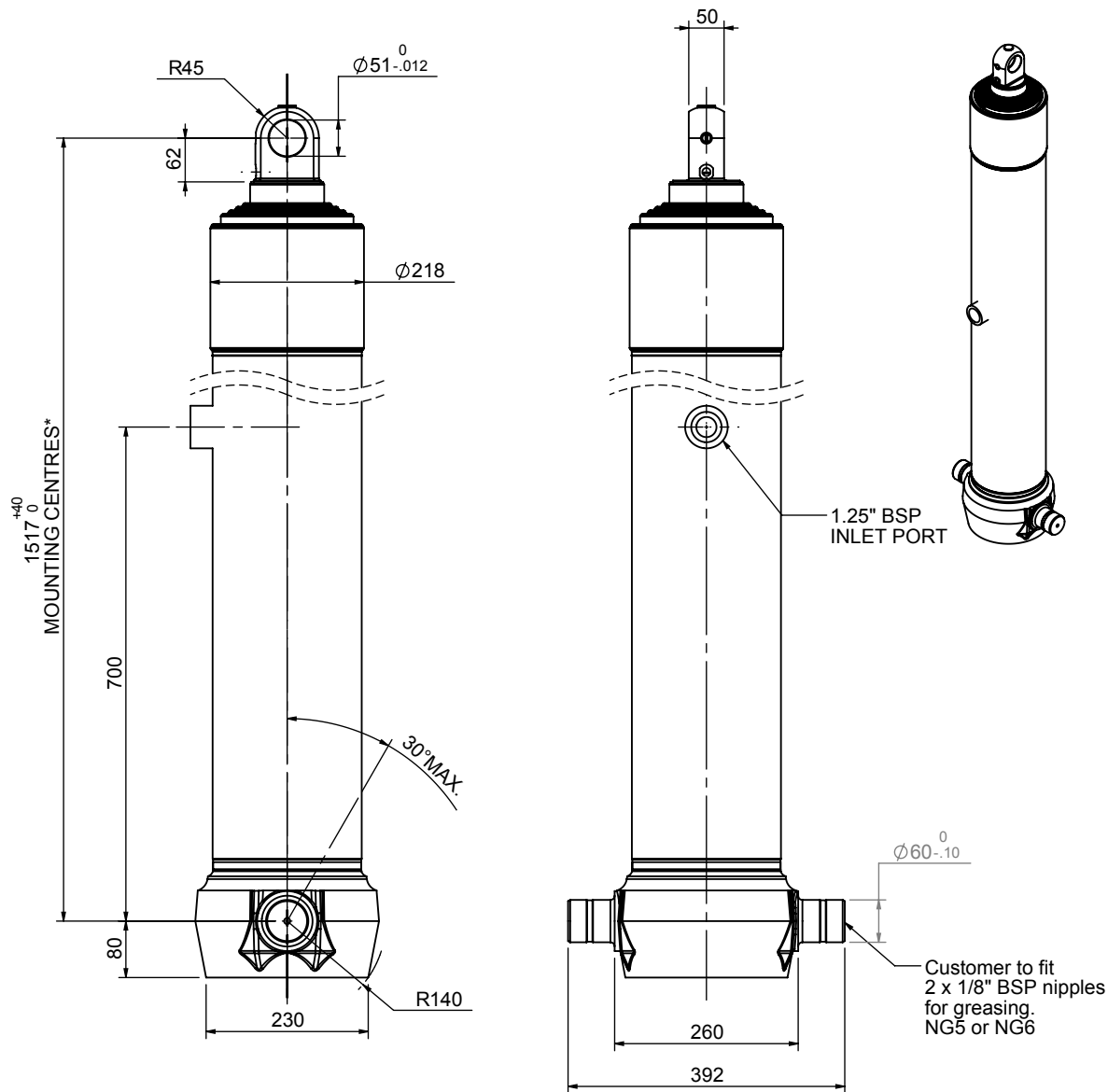


Cylinder 5 stage front end with plain eye



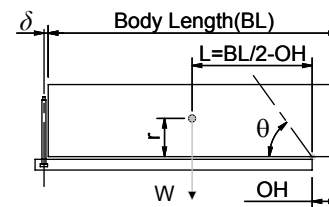
*Includes 9mm Pull Out Last Stage Chrome Plated

CS180E55483B70S02

SPECIFICATION		RATED CAPACITY : 39-54 TONNES**		
Stage	Diameter	Length	Stroke	Swept Volume
-	-	-	-	-
0	211	1475	-	-
1	188	1440	1217	34
2	167	1440	1237	27
3	147	1440	1247	21
4	127	1440	1262	16
5	105	1467	517	4
Final stroke reduced by	750	Total (+5/-10)	5480	102
Cylinder Mass (Kg)	261.20	Priming Volume	20	
Rated Pressure (Bar)	150	Total Volume (Litres)	122	
Maximum Pressure (Bar)	175	Max. first stage thrust	260 KN	

**TIPPING CAPACITY AT RATED PRESSURE

$d = 0 ; r = 900$



BODY LENGTH (BL)						OH
7000		7500		8000		
46	48°	42	45°	39	41°	150
54	51°	47	47°	43	43°	450
XX	YY°	54	49°	48	45°	750

— Tipping angle (θ)
— Body + payload mass, W (tonne)

For guidance only;

Higher Rated Pressures may be possible. To check your application, email Edbro plc at <applications@edbro.co.uk>

NOTES

- If hydraulic pressure is used to limit overloading, the system relief valve must be set to the Rated Pressure unless agreed otherwise by Edbro
- The system relief valve can be set to Maximum Pressure if the load is limited by other means. See RATINGS page for advice
- This cylinder is for lifting purposes only and sload conditions must be avoided
- Cylinder is painted in primer paint to RAL5013
- See bracket options page BRKT01, BRKT02
- See installation instructions INSTALL01
- Use oil according to specification OIL01