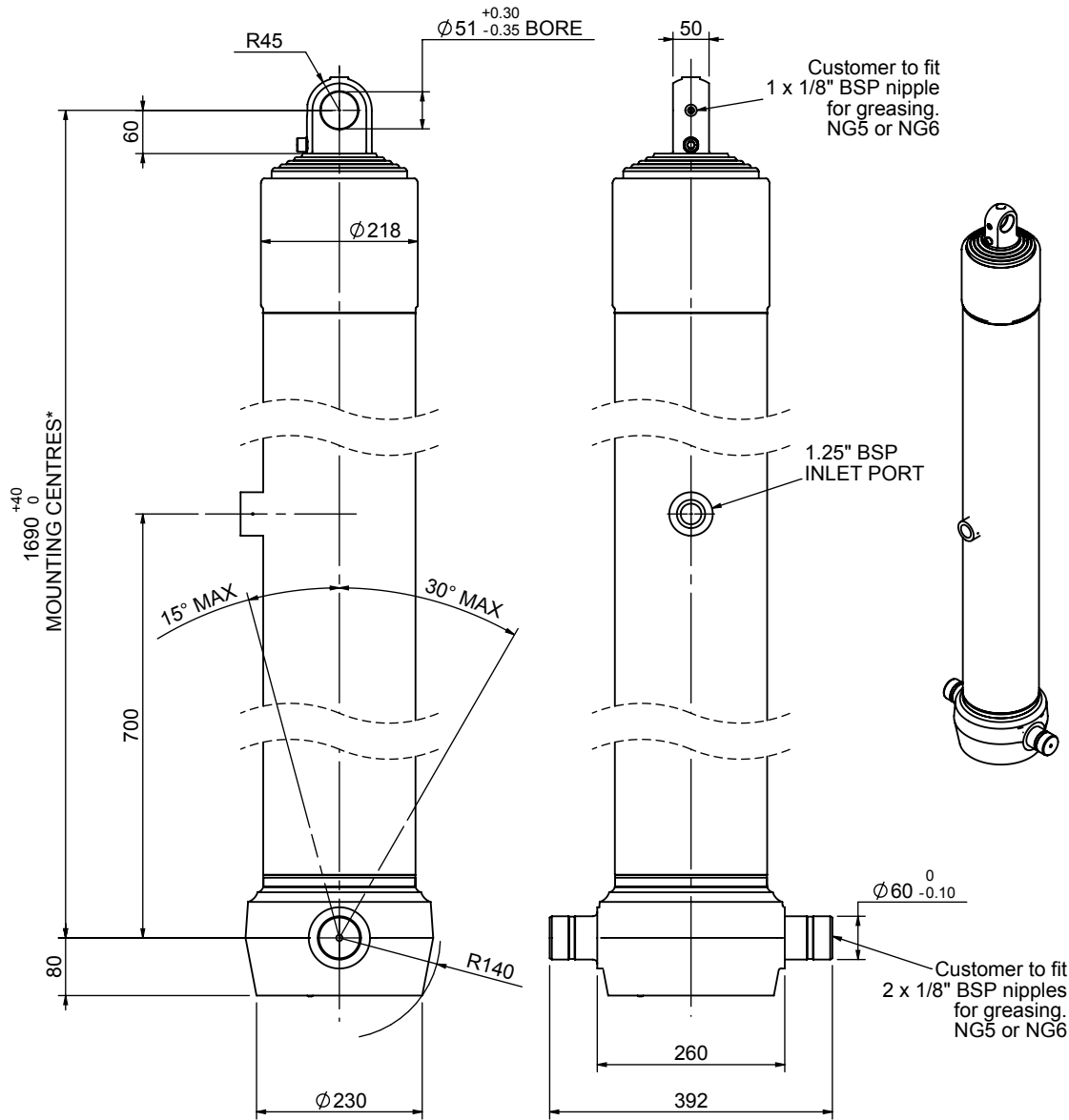


Cylinder 5 stage front end with plain eye

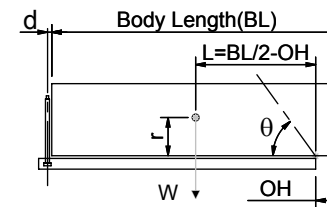


*Includes 9mm Pull Out.
Last Stage Chrome Plated

CS180E57233B70A01

SPECIFICATION		TIPPING CAPACITY : 31-38 TONNES***		
Stage	Diameter	Length	Stroke	Swept Volume
-	-	-	-	-
0	211	1675	-	-
1	188	1640	1418	39
2	167	1640	1437	31
3	147	1640	1447	25
4	127	1640	1462	19
5	105	1640	1467	13
Total (+5/-10)			7231	127
Final stroke reduced by	0	Priming Volume		24
Cylinder Mass (Kg)	290	Total Volume (Litres)		151
Maximum Pressure (Bar)	190	Max. first stage thrust		265 KN

***TIPPING CAPACITY AT WORKING PRESSURE



BODY LENGTH (BL)						OH
9250		9750		10250		
33	48°	32	45°	31	43°	150
35	49°	34	47°	32	44°	450
38	51°	36	48°	34	45°	750

$d = 0$; $r = 750$; Working Pressure 135 bar

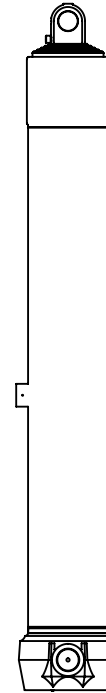
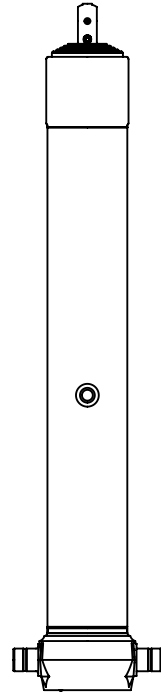
For guidance only;

Higher working pressures and tipping capacities may be possible.

To check your application email - applications@edbro.co.uk

NOTES

- This cylinder is for lifting purposes only and side load conditions should be avoided
- Cylinder is painted in primer paint to RAL5013
- Refer to www.edbro.com for:-
 - Bracket details
 - Installation instructions that must be observed
 - Correct oil selection
 - An explanation of tipping capacity



CS180E57233B70A01