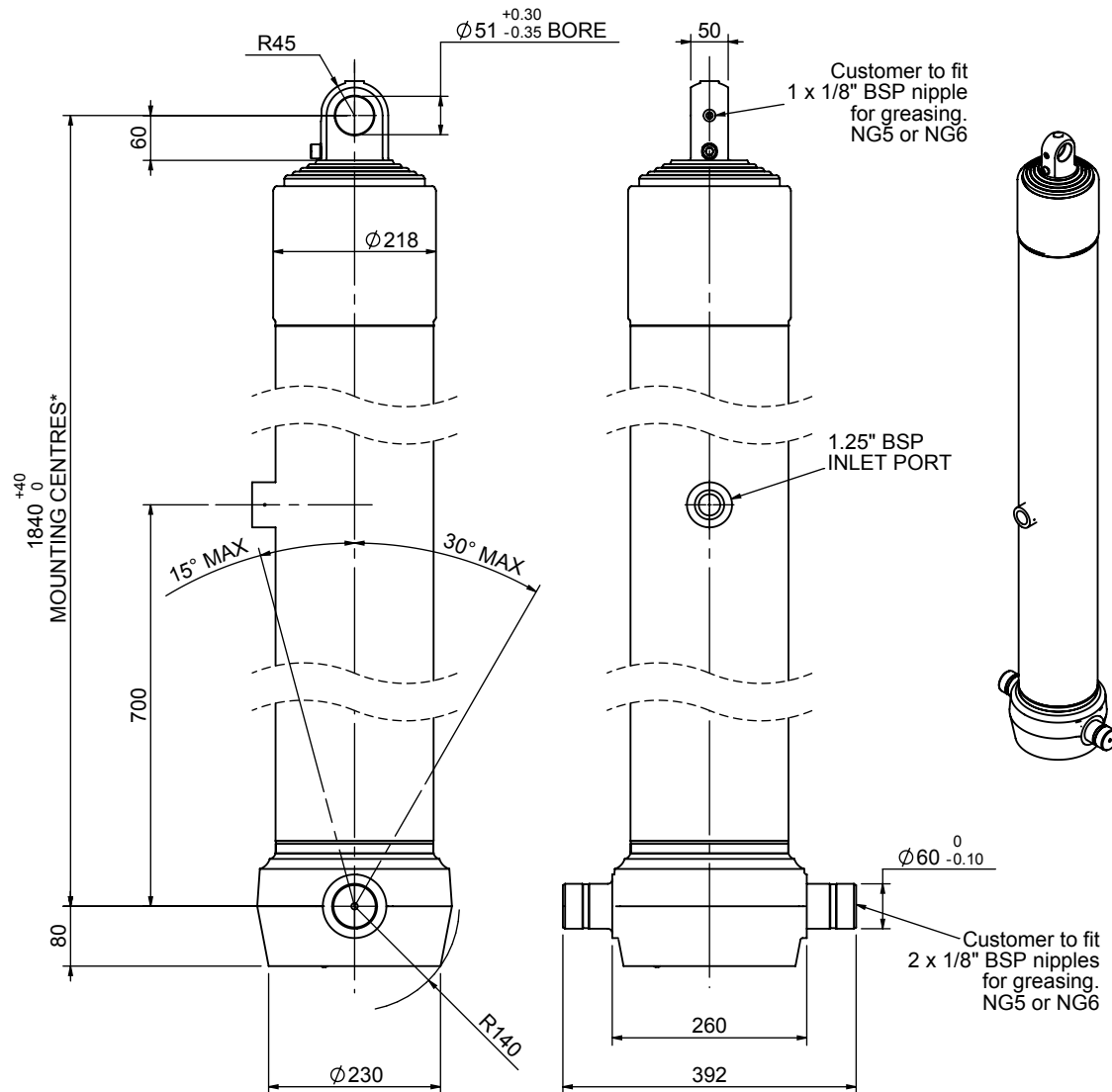


Cylinder 5 stage front end with plain eye

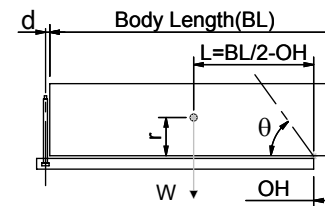


*Includes 9mm Pull Out.
Last Stage Chrome Plated

CS180E57983B70A01

SPECIFICATION		TIPPING CAPACITY : 25-31 TONNES***		
Stage	Diameter	Length	Stroke	Swept Volume
-	-	-	-	-
0	211	1825	-	-
1	188	1790	1568	44
2	167	1790	1587	35
3	147	1790	1597	27
4	127	1790	1612	20
5	105	1790	1617	14
Total (+5/-10)			7981	140
Final stroke reduced by	0	Priming Volume		26
Cylinder Mass (Kg)	312	Total Volume (Litres)		166
Maximum Pressure (Bar)	190	Max. first stage thrust		265 KN

***TIPPING CAPACITY AT WORKING PRESSURE



BODY LENGTH (BL)					OH	
10000	10500	11000				
27	49°	26	46°	25	44°	150
28	50°	27	48°	26	45°	450
31	52°	29	49°	28	47°	750

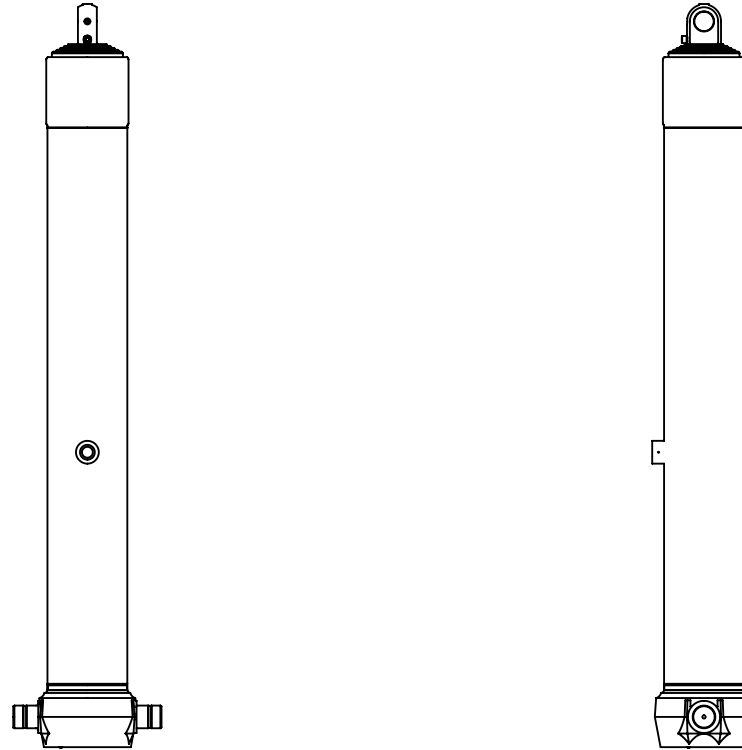
d = 0; r = 750; Working Pressure 110 bar

For guidance only;

Higher working pressures and tipping capacities may be possible.
To check your application email - applications@edbro.co.uk

NOTES

1. This cylinder is for lifting purposes only and side load conditions should be avoided
2. Cylinder is painted in primer paint to RAL5013
3. Refer to www.edbro.com for:-
 - Bracket details
 - Installation instructions that must be observed
 - Correct oil selection
 - An explanation of tipping capacity



CS180E57983B70A01