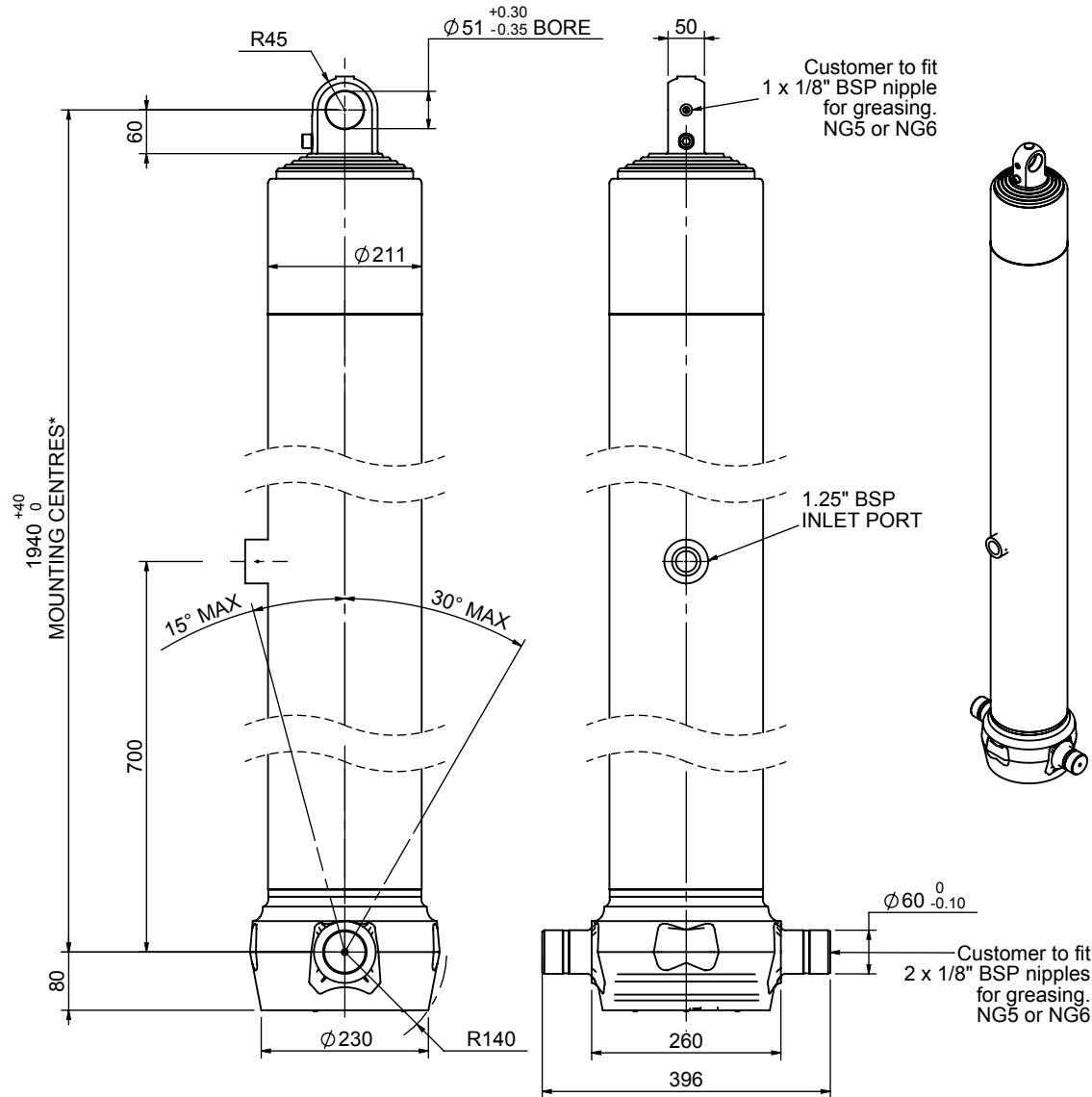


Cylinder 5 stage front end with plain eye

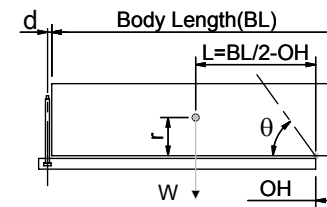


*Includes 9mm Pull Out.
Last Stage Chrome Plated

CS180E58183B70G01

SPECIFICATION		TIPPING CAPACITY : 26-32 TONNES***		
Stage	Diameter	Length	Stroke	Swept Volume
-	-	-	-	-
0	211	1925	-	-
1	188	1890	1668	46
2	167	1890	1687	37
3	147	1890	1697	29
4	127	1890	1712	22
5	105	1890	1417	12
Total (+5/-10)			8181	146
Final stroke reduced by	300	Priming Volume		26
Cylinder Mass (Kg)	324	Total Volume (Litres)		172
Maximum Pressure (Bar)	190	Max. first stage thrust		265 KN

***TIPPING CAPACITY AT WORKING PRESSURE



BODY LENGTH (BL)						OH
10000	10500	11000				
28	50°	27	47°	26	45°	150
30	52°	28	49°	27	46°	450
32	54°	30	51°	29	48°	750

d = 0; r = 750; Working Pressure 110 bar

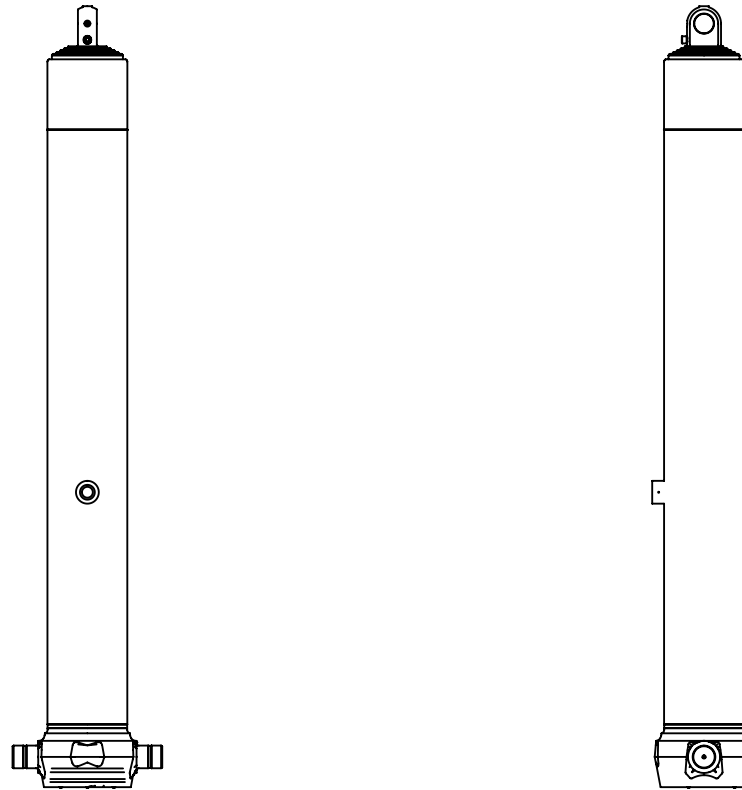
For guidance only;

Higher working pressures and tipping capacities may be possible.

To check your application email - applications@edbro.co.uk

NOTES

1. This cylinder is for lifting purposes only and side load conditions should be avoided
2. Cylinder is painted in primer paint to RAL5013
3. Refer to www.edbro.com for;-
 - Bracket details
 - Installation instructions that must be observed
 - Correct oil selection
 - An explanation of tipping capacity



CS180E58183B70G01