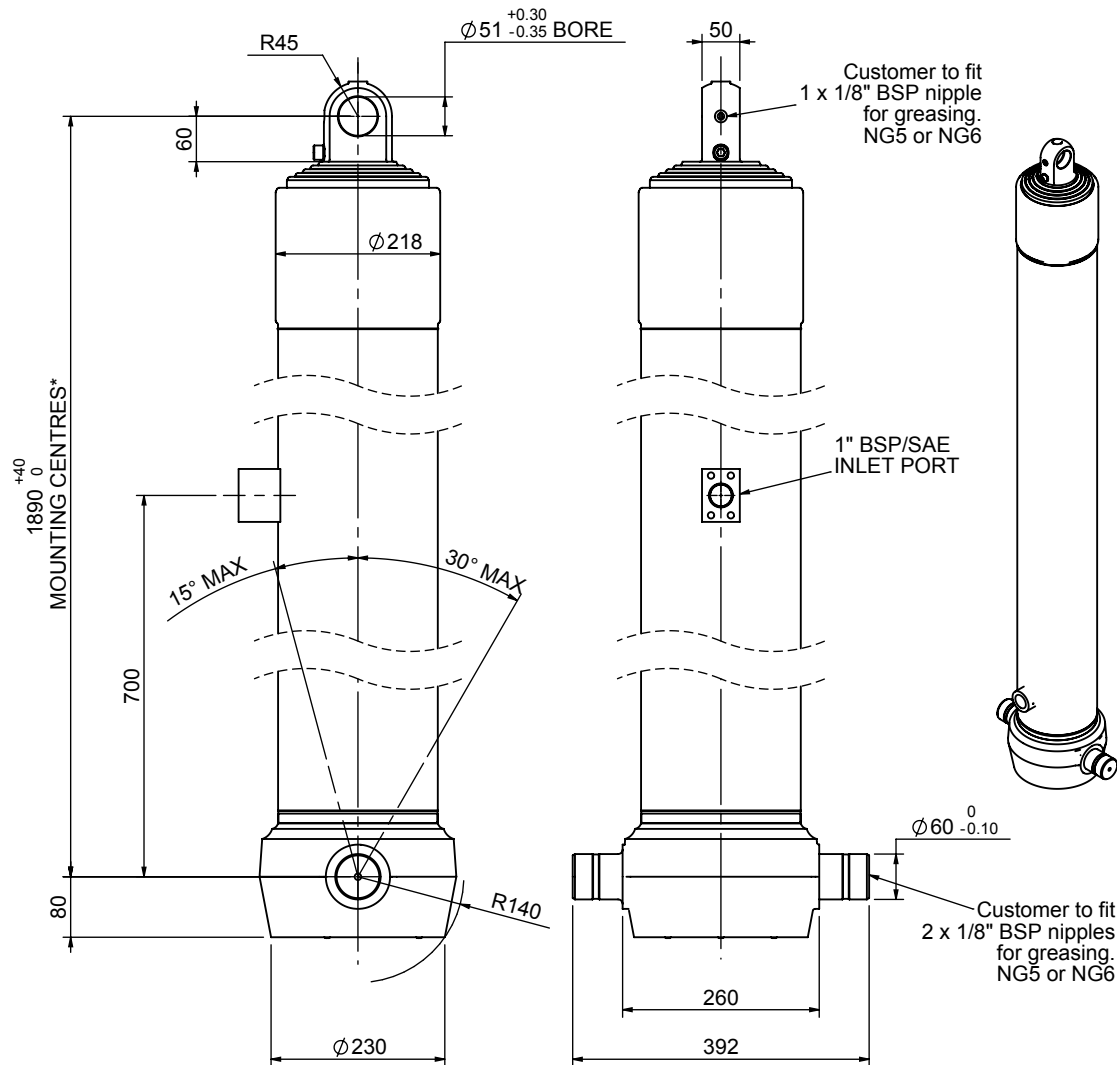


Cylinder 5 stage front end with plain eye

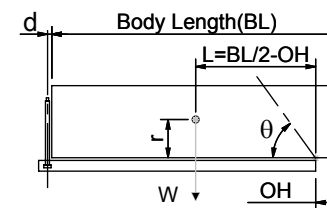


*Includes 9mm Pull Out.
Last Stage Chrome Plated

CS180E58233S70A01

SPECIFICATION		TIPPING CAPACITY : 21-26 TONNES***		
Stage	Diameter	Length	Stroke	Swept Volume
-	-	-	-	-
0	211	1875	-	-
1	188	1840	1618	45
2	167	1840	1637	36
3	147	1840	1647	28
4	127	1840	1662	21
5	105	1840	1667	14
Total (+5/-10)			8231	144
Final stroke reduced by	0	Priming Volume		27
Cylinder Mass (Kg)	321	Total Volume (Litres)		171
Maximum Pressure (Bar)	190	Max. first stage thrust		265 KN

***TIPPING CAPACITY AT WORKING PRESSURE



BODY LENGTH (BL)						OH
10000	10500	11000				
22	50°	21	48°	21	45°	150
24	52°	23	49°	22	47°	450
26	54°	24	51°	23	48°	750

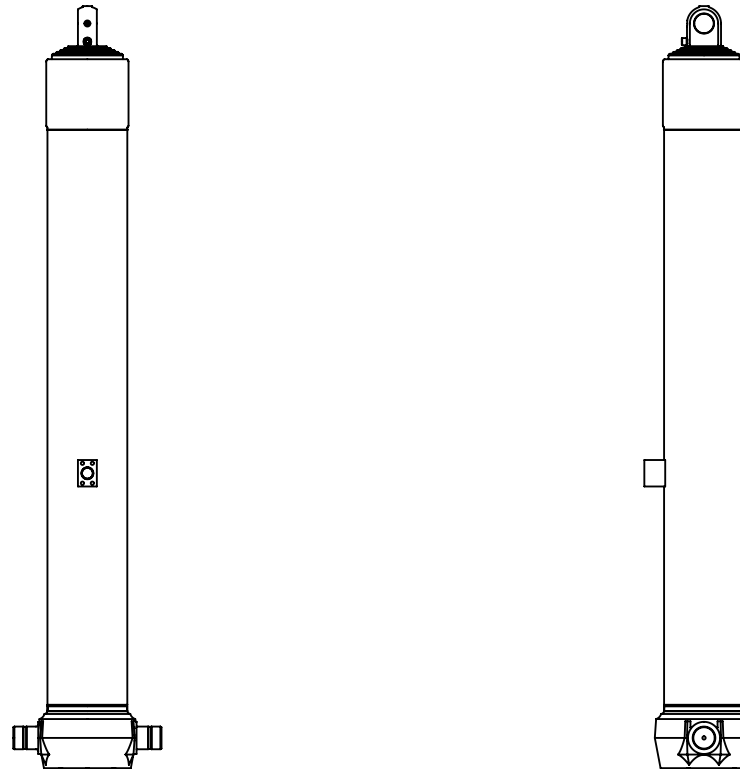
d = 0; r = 750; Working Pressure 90 bar

For guidance only;

Higher working pressures and tipping capacities may be possible.
To check your application email - applications@edbro.co.uk

NOTES

1. This cylinder is for lifting purposes only and side load conditions should be avoided
2. Cylinder is painted in primer paint to RAL5013
3. Refer to www.edbro.com for:-
 - Bracket details
 - Installation instructions that must be observed
 - Correct oil selection
 - An explanation of tipping capacity



CS180E58233S70A01