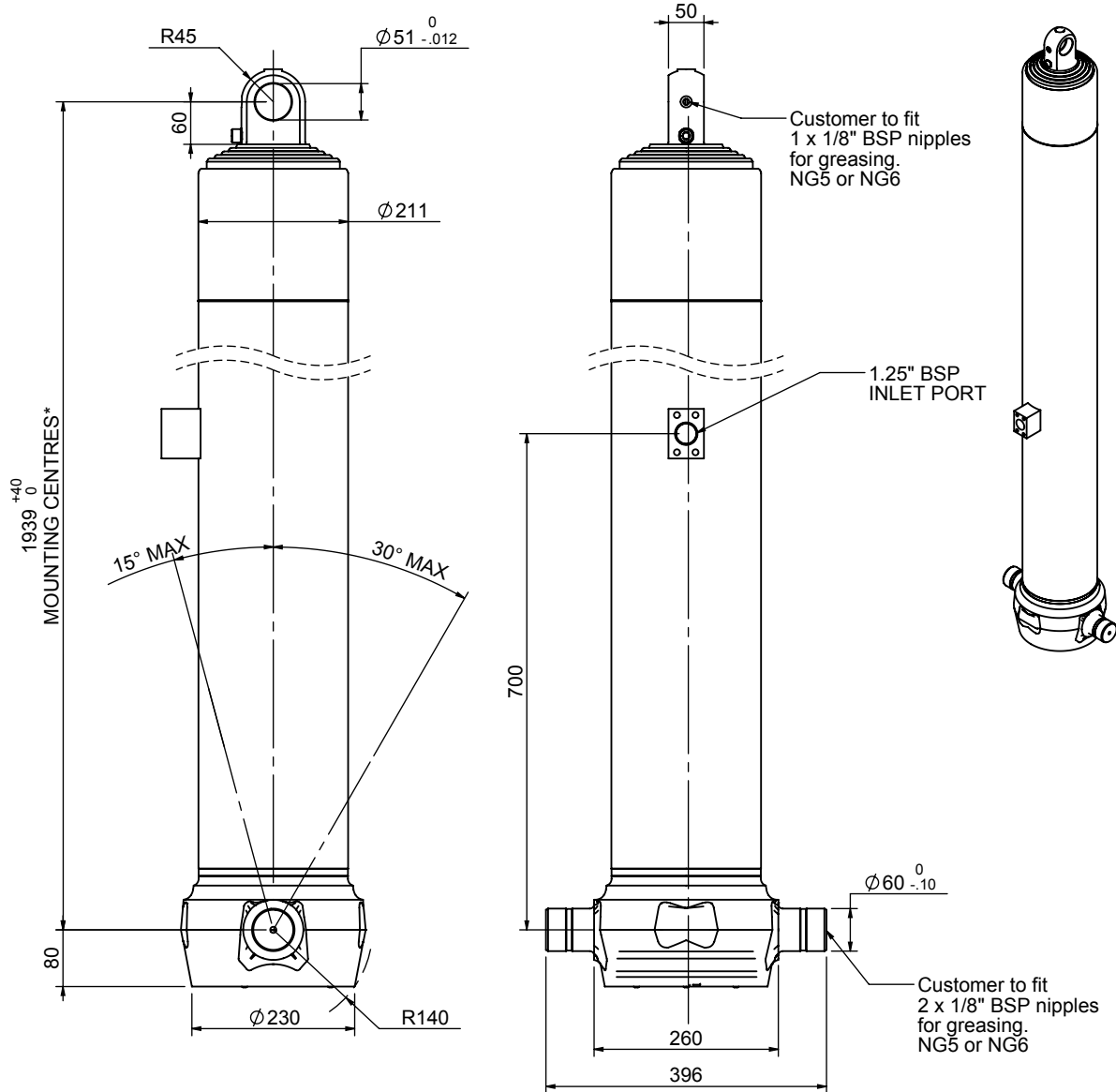


# Cylinder 5 stage front end with plain eye



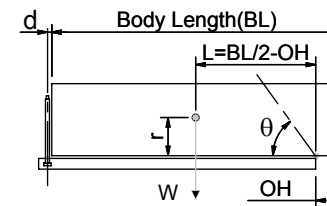
\*Includes 9 mm Pull Out.  
All Stages Chrome Plated

# CS180E58483S70A01C

## SPECIFICATION TIPPING CAPACITY : 20-25 TONNES\*\*\*

Stage	Diameter	Length	Stroke	Swept Volume
-	-	-	-	-
-	-	-	-	-
0	211	1925	-	-
1	188	1890	1668	46
2	167	1890	1687	37
3	147	1890	1697	29
4	127	1890	1712	22
5	105	1890	1717	15
Final stroke reduced by	0	Total (+5/-10)	8481	149
Cylinder Mass (Kg)	325	Priming Volume		27.5
Maximum Pressure (Bar)	190	Max. first stage thrust		265 KN

## \*\*\*TIPPING CAPACITY AT WORKING PRESSURE



BODY LENGTH (BL)						OH
10500	11000	11500				
22	49°	21	47°	20	45°	150
23	51°	22	48°	22	46°	450
25	53°	24	50°	23	47°	750

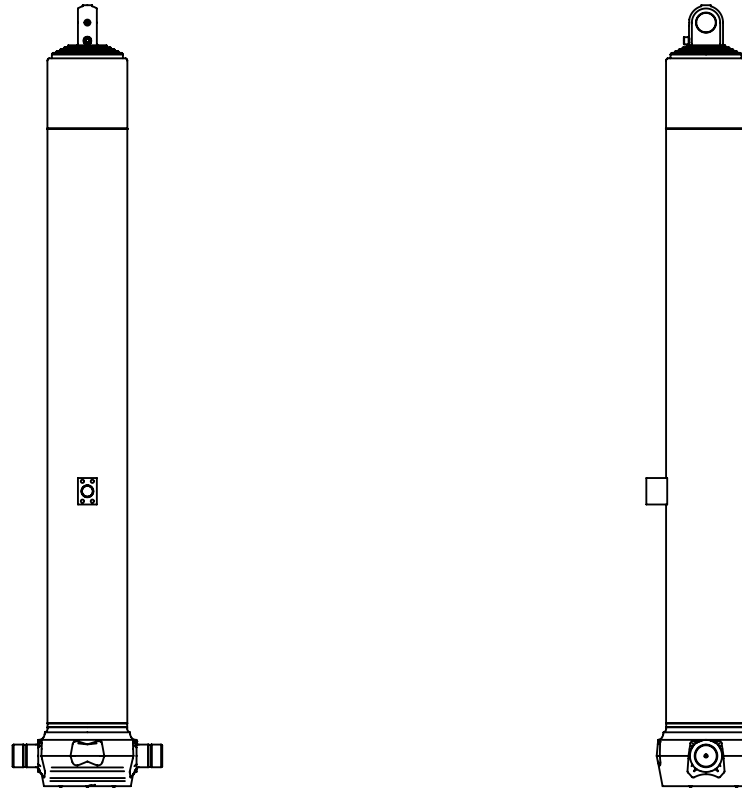
d = 0; r = 900; Working Pressure 90 bar

## For guidance only;

Higher working pressures and tipping capacities may be possible.  
To check your application email - [applications@edbro.co.uk](mailto:applications@edbro.co.uk)

## NOTES

1. This cylinder is for lifting purposes only and side load conditions should be avoided
2. Cylinder is painted in primer paint to RAL5013
3. Refer to [www.edbro.com](http://www.edbro.com) for:-
  - Bracket details
  - Installation instructions that must be observed
  - Correct oil selection
  - An explanation of tipping capacity



CS180E58483S70A01C