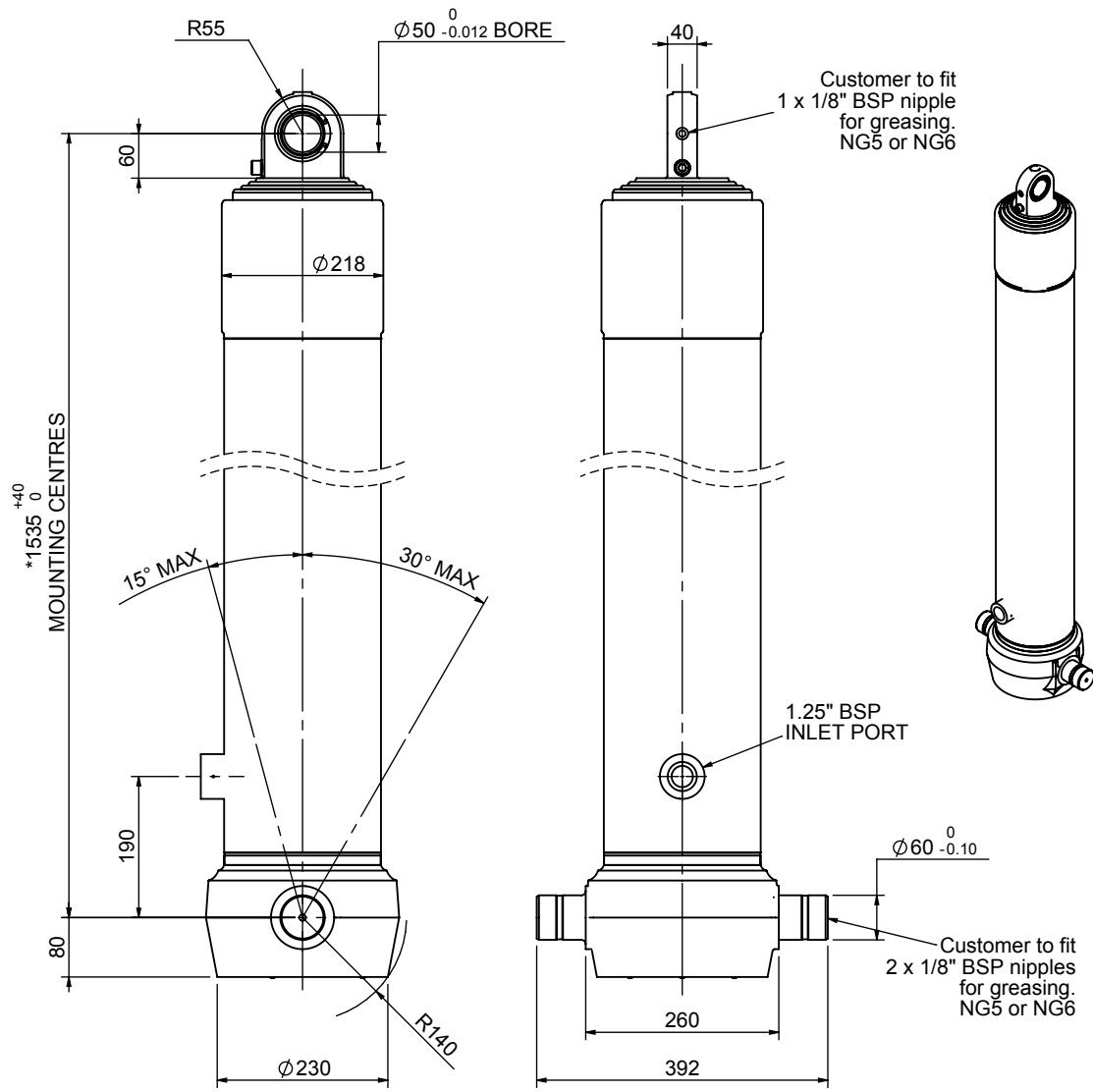


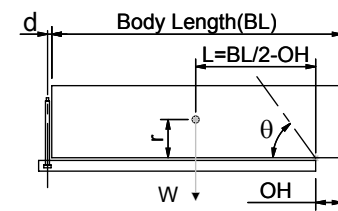
# Cylinder 4 stage front end with spherical eye

CS180S45166B19A01



SPECIFICATION		TIPPING CAPACITY : 44-62 TONNES***		
Stage	Diameter	Length	Stroke	Swept Volume
-	-	-	-	-
-	-	-	-	-
0	211	1525	-	-
1	188	1490	1268	35
2	167	1490	1287	28
3	147	1490	1297	22
4	127	1490	1312	17
Total (+5/-10)			5164	102
Final stroke reduced by	0	Priming Volume		24
Cylinder Mass (Kg)	242	Total Volume (Litres)		139
Maximum Pressure (Bar)	190	Max. first stage thrust		265 KN

### \*\*\*TIPPING CAPACITY AT WORKING PRESSURE



BODY LENGTH (BL)						OH
6750	7250	7750				
49	47°	46	43°	44	40°	150
54	50°	51	45°	48	42°	450
62	52°	56	48°	52	44°	750

d = 0; r = 750; Working Pressure 135 bar

### For guidance only;

Higher working pressures and tipping capacities may be possible.  
To check your application email - [applications@edbro.co.uk](mailto:applications@edbro.co.uk)

### NOTES

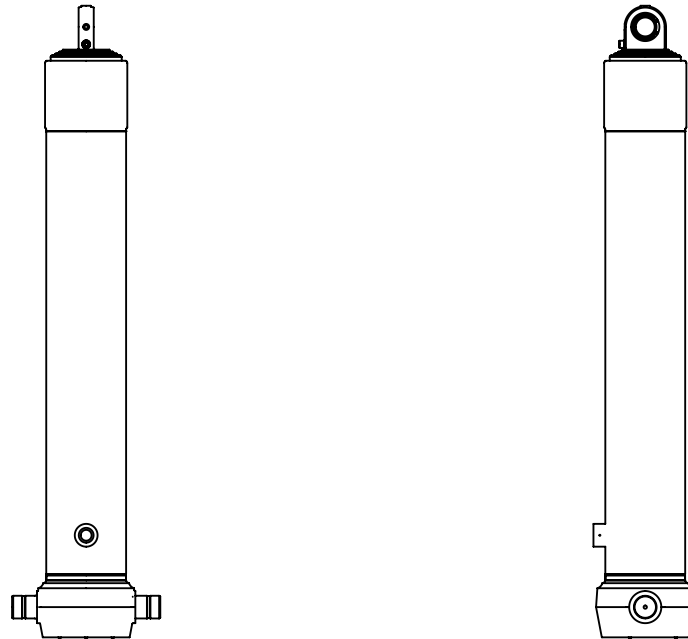
1. This cylinder is for lifting purposes only and side load conditions should be avoided
2. Cylinder is painted in primer paint to RAL5013
3. Refer to [www.edbro.com](http://www.edbro.com) for:-
  - Bracket details
  - Installation instructions that must be observed
  - Correct oil selection
  - An explanation of tipping capacity

\*Includes 9mm Pull Out.  
Last Stage Chrome Plated



**Edbro plc**  
Nelson Street, Bolton, England, BL3 2JJ  
Tel +44 (0) 1204 528888 Fax +44 (0) 1204 531957  
Email: [postmaster@edbro.com](mailto:postmaster@edbro.com) Web: [www.edbro.com](http://www.edbro.com)

Technical Specifications are subject to change without notice  
Date Created/Updated: 29 August 2012  
Refer [www.edbro.com](http://www.edbro.com) to confirm latest specification  
All dimensions are in 'mm', unless otherwise stated



CS180S45166B19A01