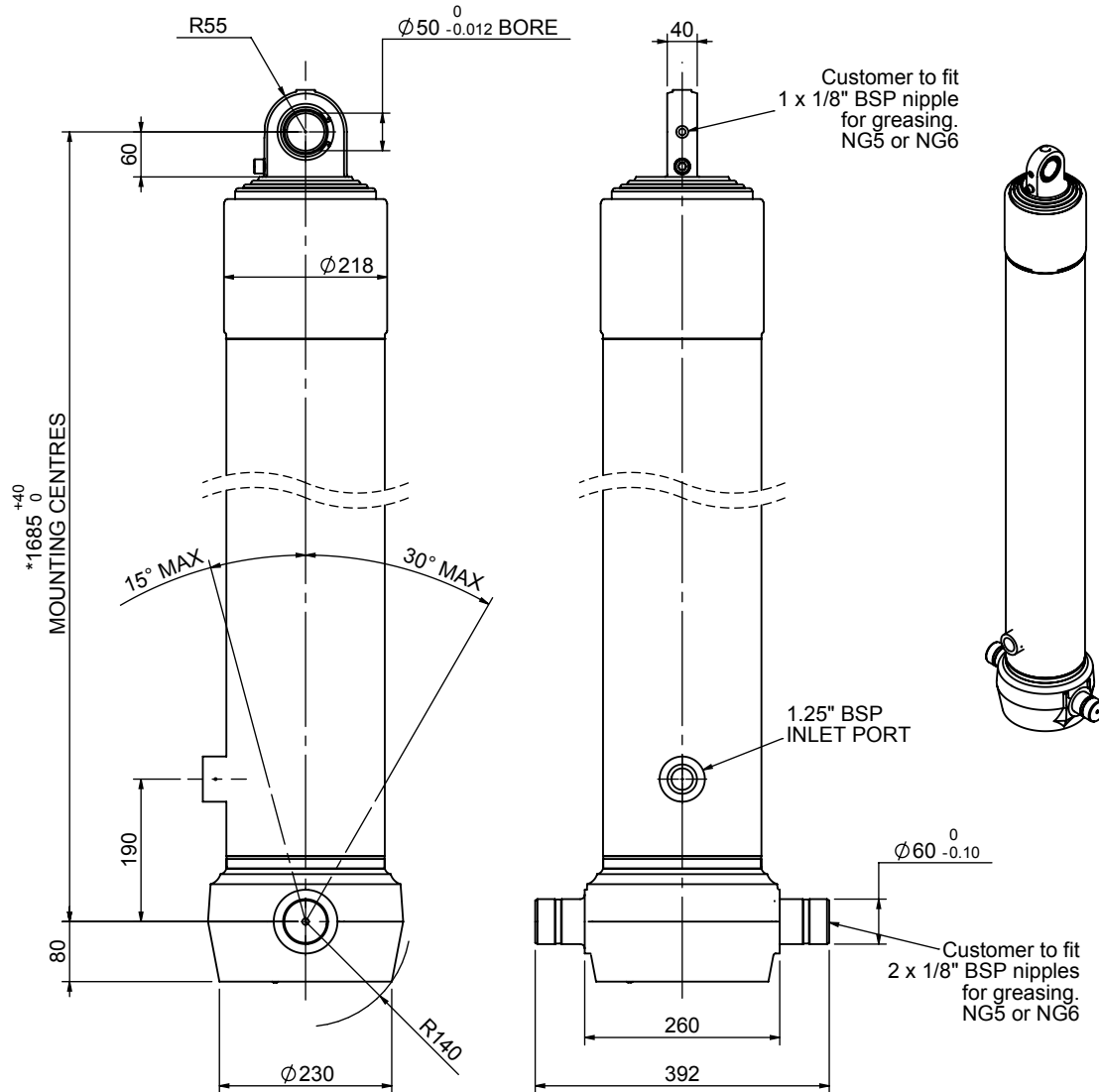


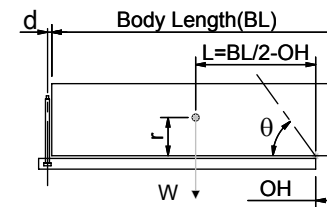
# Cylinder 4 stage front end with spherical eye

CS180S45766B19A01



SPECIFICATION		TIPPING CAPACITY : 44-58 TONNES***		
Stage	Diameter	Length	Stroke	Swept Volume
-	-	-	-	-
-	-	-	-	-
0	211	1675	-	-
1	188	1640	1418	39
2	167	1640	1437	31
3	147	1640	1447	25
4	127	1640	1462	19
Total (+5/-10)			5764	114
Final stroke reduced by	0	Priming Volume		27
Cylinder Mass (Kg)	262	Total Volume (Litres)		141
Maximum Pressure (Bar)	190	Max. first stage thrust		265 KN

### \*\*\*TIPPING CAPACITY AT WORKING PRESSURE



BODY LENGTH (BL)						OH
7500	8000	8500				
48	47°	46	44°	44	41°	150
52	49°	49	46°	47	43°	450
58	52°	54	48°	51	44°	750

d = 0; r = 750; Working Pressure 135 bar

### For guidance only;

Higher working pressures and tipping capacities may be possible.

To check your application email - [applications@edbro.co.uk](mailto:applications@edbro.co.uk)

### NOTES

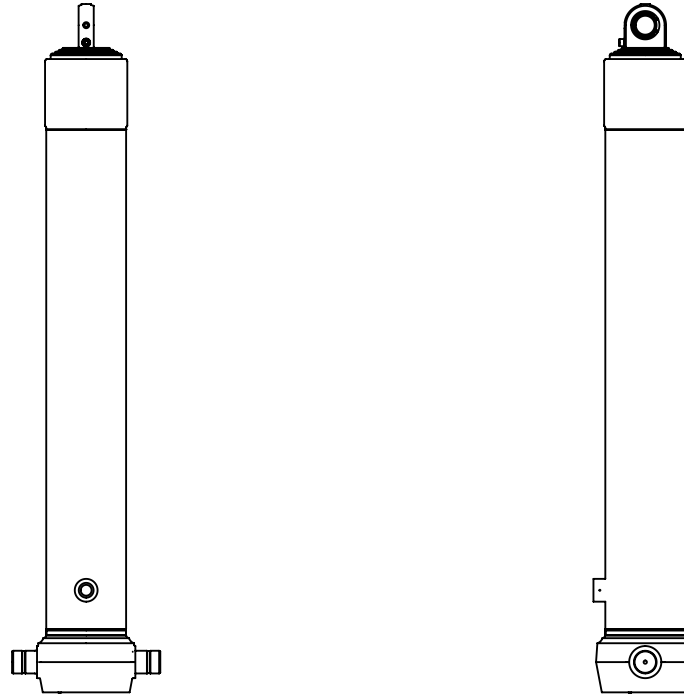
1. This cylinder is for lifting purposes only and side load conditions should be avoided
2. Cylinder is painted in primer paint to RAL5013
3. Refer to [www.edbro.com](http://www.edbro.com) for;-
  - Bracket details
  - Installation instructions that must be observed
  - Correct oil selection
  - An explanation of tipping capacity

\*Includes 9mm Pull Out.  
Last Stage Chrome Plated

**Edbro**  
SETTING THE INDUSTRY STANDARD

**Edbro plc**  
Nelson Street, Bolton, England, BL3 2JJ  
Tel +44 (0) 1204 528888 Fax +44 (0) 1204 531957  
Email: [postmaster@edbro.com](mailto:postmaster@edbro.com) Web: [www.edbro.com](http://www.edbro.com)

Technical Specifications are subject to change without notice  
Date Created/Updated: 24 August 2012  
Refer [www.edbro.com](http://www.edbro.com) to confirm latest specification  
All dimensions are in 'mm', unless otherwise stated



CS180S45766B19A01