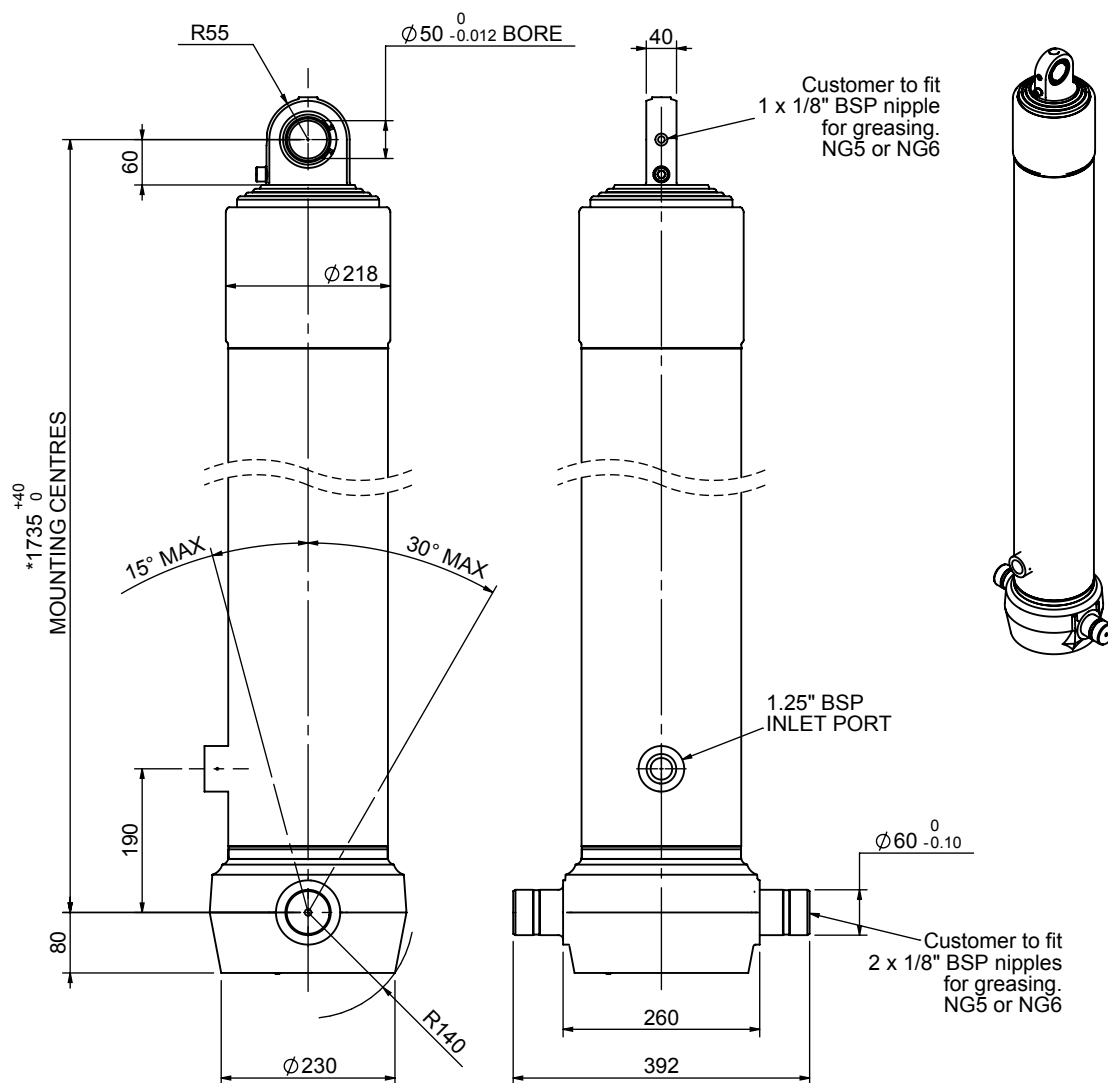


Cylinder 4 stage front end with spherical eye

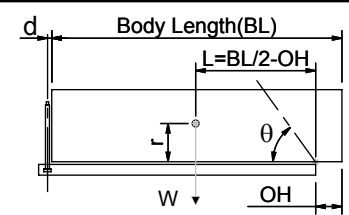
CS180S45966B19A01



SPECIFICATION TIPPING CAPACITY : 44-57 TONNES***

Stage	Diameter	Length	Stroke	Swept Volume
-	-	-	-	-
-	-	-	-	-
0	211	1725	-	-
1	188	1690	1468	41
2	167	1690	1487	33
3	147	1690	1497	25
4	127	1690	1512	19
Total (+5/-10)			5964	118
Final stroke reduced by	0	Priming Volume		28
Cylinder Mass (Kg)	268	Total Volume (Litres)		146
Maximum Pressure (Bar)	190	Max. first stage thrust		265 KN

***TIPPING CAPACITY AT WORKING PRESSURE



BODY LENGTH (BL)						OH
7750	8250	8750				
47	47°	45	44°	44	41°	150
52	49°	49	46°	47	43°	450
57	52°	53	48°	50	45°	750

$d = 0$; $r = 750$; Working Pressure 135 bar
For guidance only;
 Higher working pressures and tipping capacities may be possible.
 To check your application email - applications@edbro.co.uk

NOTES

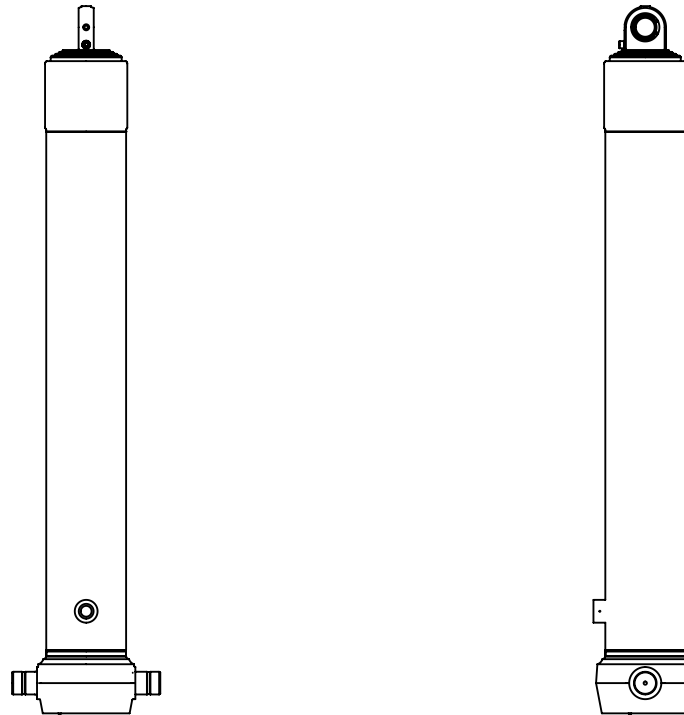
- This cylinder is for lifting purposes only and side load conditions should be avoided
- Cylinder is painted in primer paint to RAL5013
- Refer to www.edbro.com for:-
 - Bracket details
 - Installation instructions that must be observed
 - Correct oil selection
 - An explanation of tipping capacity

*Includes 9mm Pull Out.
 Last Stage Chrome Plated



Edbro plc
 Nelson Street, Bolton, England, BL3 2JJ
 Tel +44 (0) 1204 528888 Fax +44 (0) 1204 531957
 Email: postmaster@edbro.com Web: www.edbro.com

Technical Specifications are subject to change without notice
 Date Created/Updated: 24 August 2012
 Refer www.edbro.com to confirm latest specification
 All dimensions are in 'mm', unless otherwise stated



CS180S45966B19A01