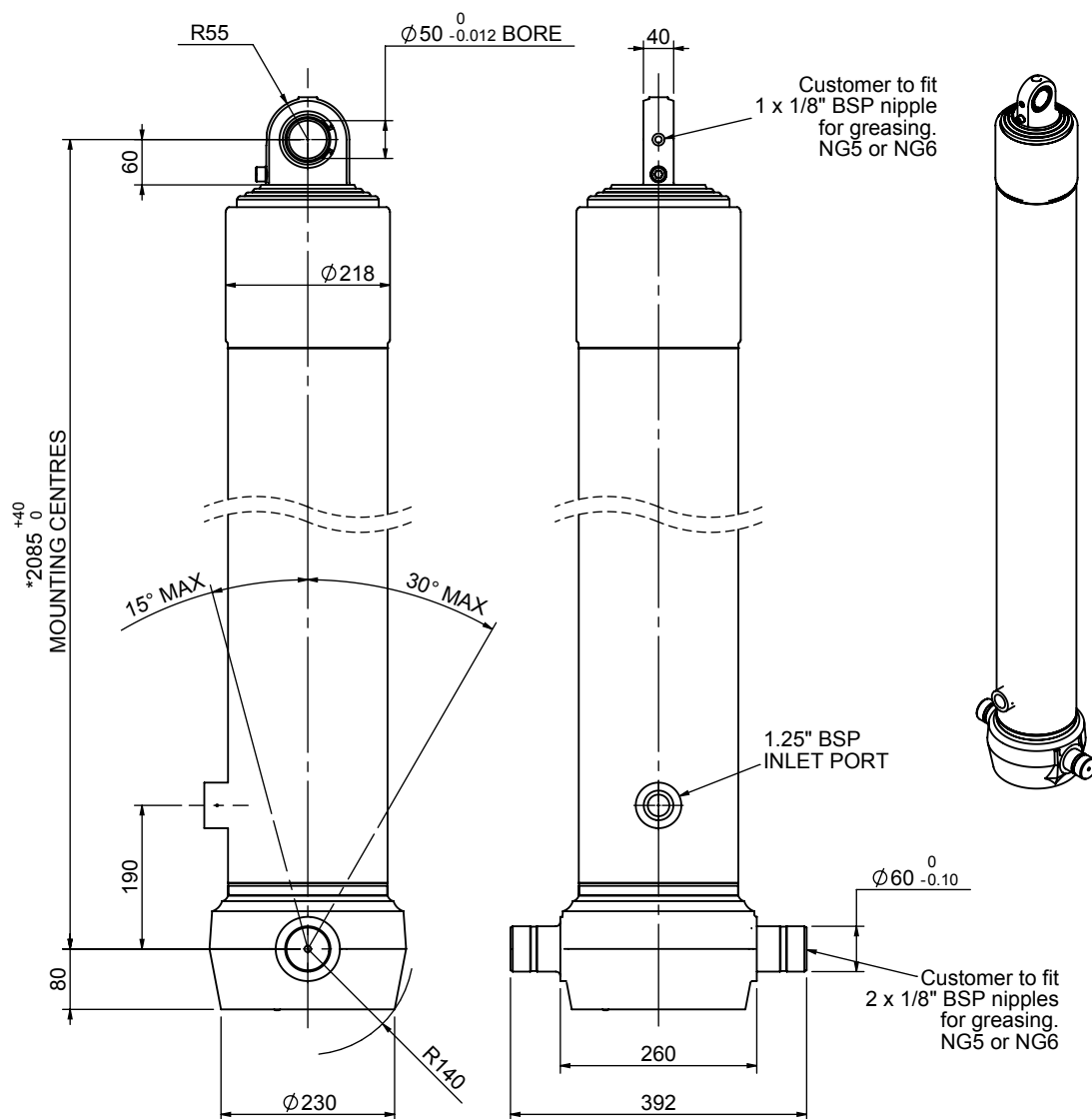


Cylinder 4 stage front end with spherical eye

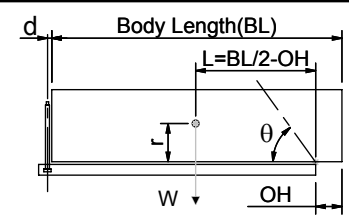
CS180S47366B19A01



SPECIFICATION

SPECIFICATION		TIPPING CAPACITY : 35-43 TONNES***		
Stage	Diameter	Length	Stroke	Swept Volume
-	-	-	-	-
-	-	-	-	-
0	211	2075	-	-
1	188	2040	1818	50
2	167	2040	1837	40
3	147	2040	1847	31
4	127	2040	1862	24
Total (+5/-10)			7364	145
Final stroke reduced by	0	Priming Volume		34
Cylinder Mass (Kg)	315	Total Volume (Litres)		179
Maximum Pressure (Bar)	190	Max. first stage thrust		265 KN

***TIPPING CAPACITY AT WORKING PRESSURE



BODY LENGTH (BL)						OH
9500		10000		10500		
37	47°	36	45°	35	42°	150
40	49°	38	46°	37	44°	450
43	51°	41	48°	39	45°	750

d = 0; r = 750; Working Pressure 110 bar
For guidance only;
 Higher working pressures and tipping capacities may be possible.
 To check your application email - applications@edbro.co.uk

NOTES

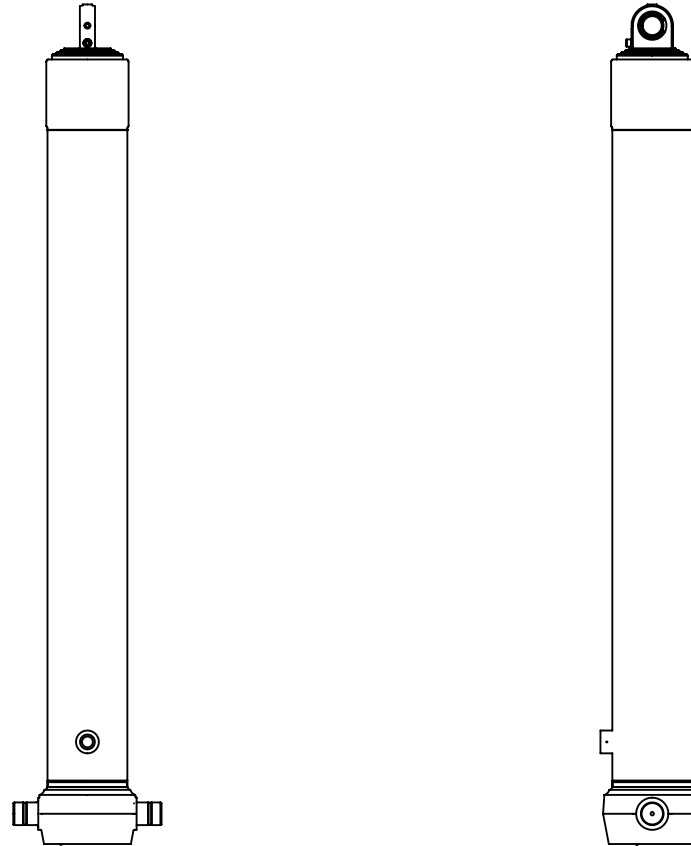
- This cylinder is for lifting purposes only and side load conditions should be avoided
- Cylinder is painted in primer paint to RAL5013
- Refer to www.edbro.com for:-
 - Bracket details
 - Installation instructions that must be observed
 - Correct oil selection
 - An explanation of tipping capacity

*Includes 9mm Pull Out.
 Last Stage Chrome Plated



Edbro plc
 Nelson Street, Bolton, England, BL3 2JJ
 Tel +44 (0) 1204 528888 Fax +44 (0) 1204 531957
 Email: postmaster@edbro.com Web: www.edbro.com

Technical Specifications are subject to change without notice
 Date Created/Updated: 24 August 2012
 Refer www.edbro.com to confirm latest specification
 All dimensions are in 'mm', unless otherwise stated



CS180S47366B19A01