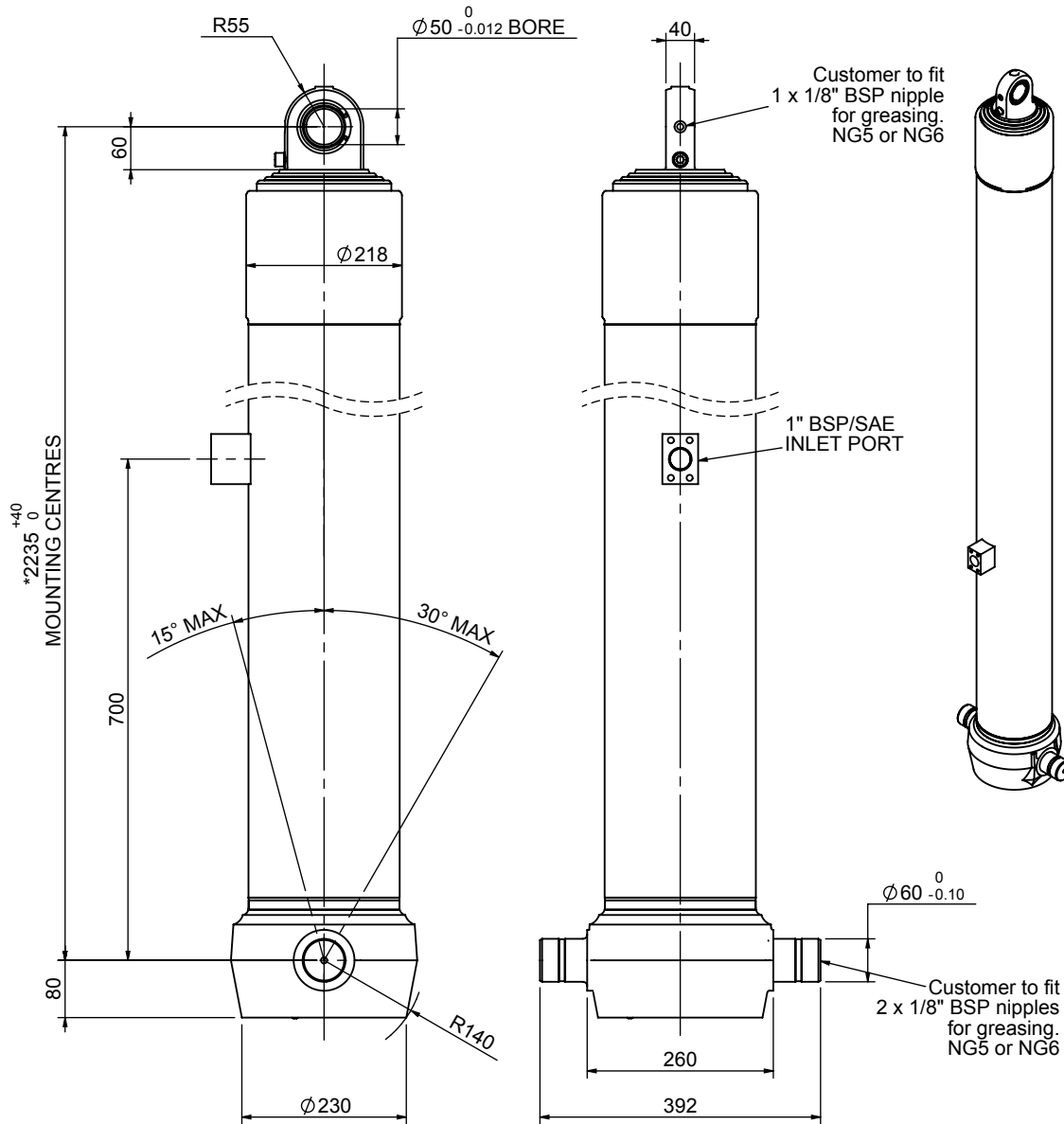


# Cylinder 4 stage front end with spherical eye

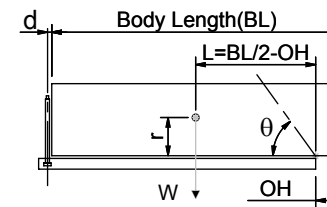


\*Includes 9mm Pull Out.  
Last Stage Chrome Plated

## CS180S47616S70H01

SPECIFICATION		TIPPING CAPACITY : 30-38 TONNES***		
Stage	Diameter	Length	Stroke	Swept Volume
-	-	-	-	-
-	-	-	-	-
0	211	2225	-	-
1	188	2190	1968	55
2	167	2190	1987	44
3	147	2190	1997	34
4	127	2190	1662	21
Total (+5/-10)			7614	154
Final stroke reduced by	350	Priming Volume		37
Cylinder Mass (Kg)	335	Total Volume (Litres)		191
Maximum Pressure (Bar)	190	Max. first stage thrust		265 KN

### \*\*\*TIPPING CAPACITY AT WORKING PRESSURE



BODY LENGTH (BL)						OH
9250	9750	10250				
33	51°	31	48°	30	45°	150
35	53°	33	49°	32	47°	450
38	55°	36	51°	34	48°	750

d = 0; r = 750; Working Pressure 90 bar

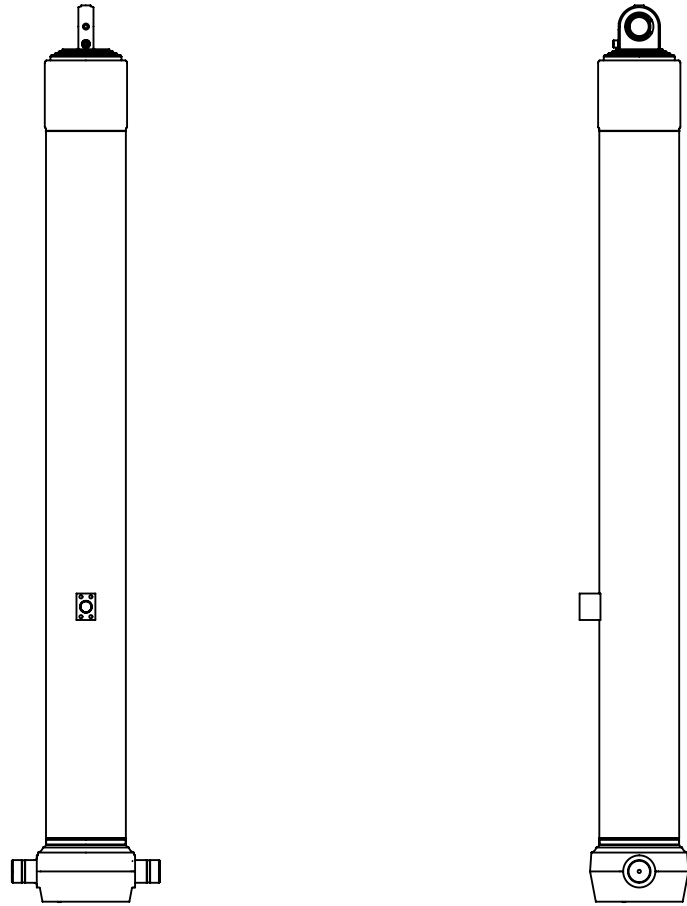
### For guidance only;

Higher working pressures and tipping capacities may be possible.

To check your application email - [applications@edbro.co.uk](mailto:applications@edbro.co.uk)

### NOTES

1. This cylinder is for lifting purposes only and side load conditions should be avoided
2. Cylinder is painted in primer paint to RAL5013
3. Refer to [www.edbro.com](http://www.edbro.com) for:-
  - Bracket details
  - Installation instructions that must be observed
  - Correct oil selection
  - An explanation of tipping capacity



CS180S47616S70H01