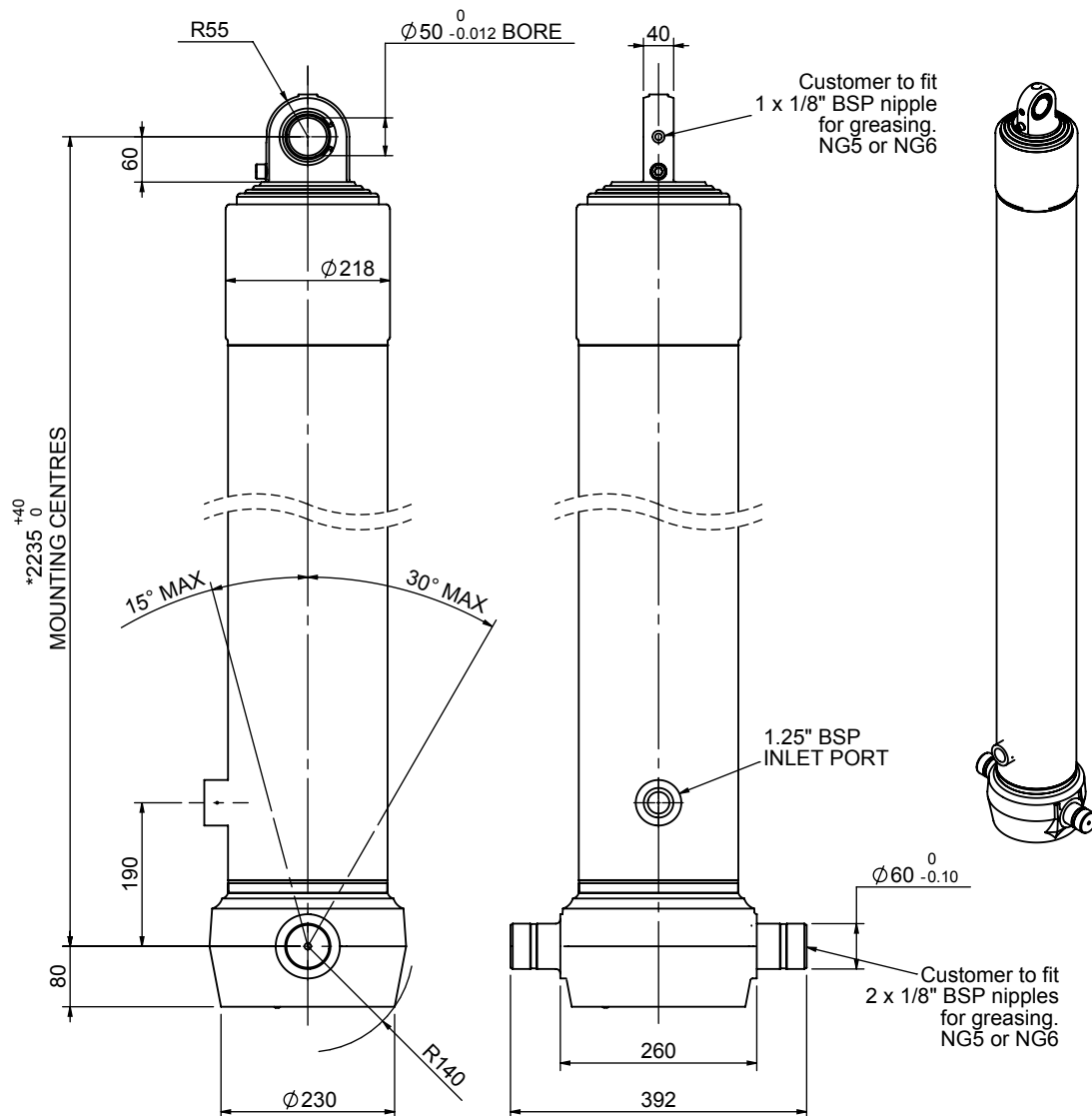


# Cylinder 4 stage front end with spherical eye

CS180S47966B19A01

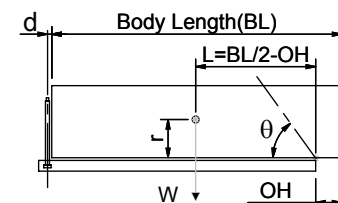


## SPECIFICATION

TIPPING CAPACITY : 29-34 TONNES\*\*\*

Stage	Diameter	Length	Stroke	Swept Volume
-	-	-	-	-
-	-	-	-	-
0	211	2225	-	-
1	188	2190	1968	55
2	167	2190	1987	44
3	147	2190	1997	34
4	127	2190	2012	25
Total (+5/-10)			7964	158
Final stroke reduced by	0	Priming Volume		37
Cylinder Mass (Kg)	335	Total Volume (Litres)		195
Maximum Pressure (Bar)	190	Max. first stage thrust		265 KN

## \*\*\*TIPPING CAPACITY AT WORKING PRESSURE



BODY LENGTH (BL)						OH
10250	10750	11250				
30	47°	29	45°	29	43°	150
32	49°	31	46°	30	44°	450
34	51°	33	48°	32	45°	750

d = 0; r = 750; Working Pressure 90 bar

**For guidance only;**  
Higher working pressures and tipping capacities may be possible.  
To check your application email - [applications@edbro.co.uk](mailto:applications@edbro.co.uk)

## NOTES

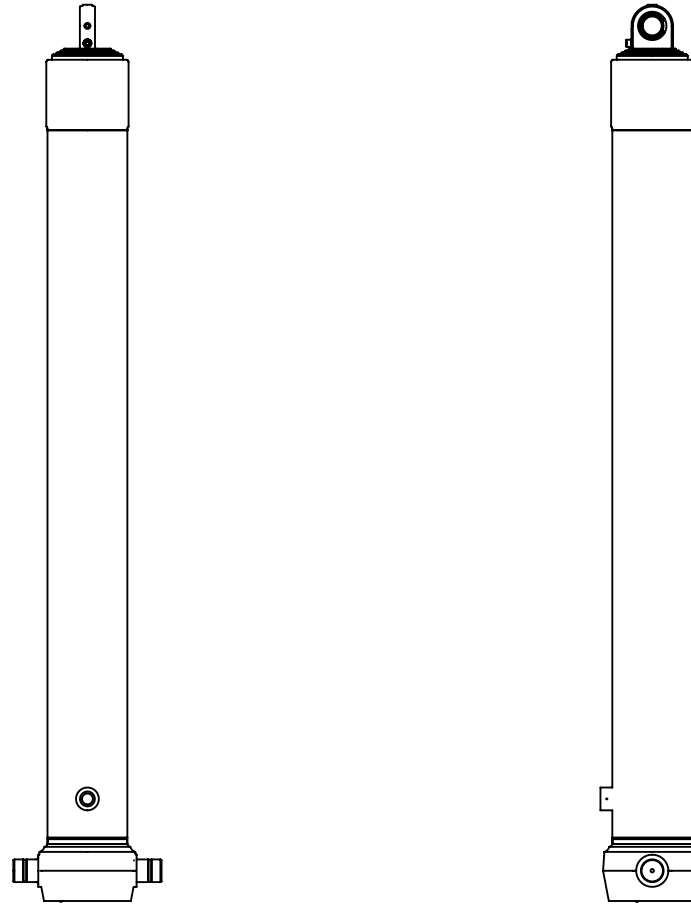
1. This cylinder is for lifting purposes only and side load conditions should be avoided
2. Cylinder is painted in primer paint to RAL5013
3. Refer to [www.edbro.com](http://www.edbro.com) for;-
  - Bracket details
  - Installation instructions that must be observed
  - Correct oil selection
  - An explanation of tipping capacity

\*Includes 9mm Pull Out.  
Last Stage Chrome Plated



**Edbro plc**  
Nelson Street, Bolton, England, BL3 2JJ  
Tel +44 (0) 1204 528888 Fax +44 (0) 1204 531957  
Email: [postmaster@edbro.com](mailto:postmaster@edbro.com) Web: [www.edbro.com](http://www.edbro.com)

Technical Specifications are subject to change without notice  
Date Created/Updated: 24 August 2012  
Refer [www.edbro.com](http://www.edbro.com) to confirm latest specification  
All dimensions are in 'mm', unless otherwise stated



CS180S47966B19A01