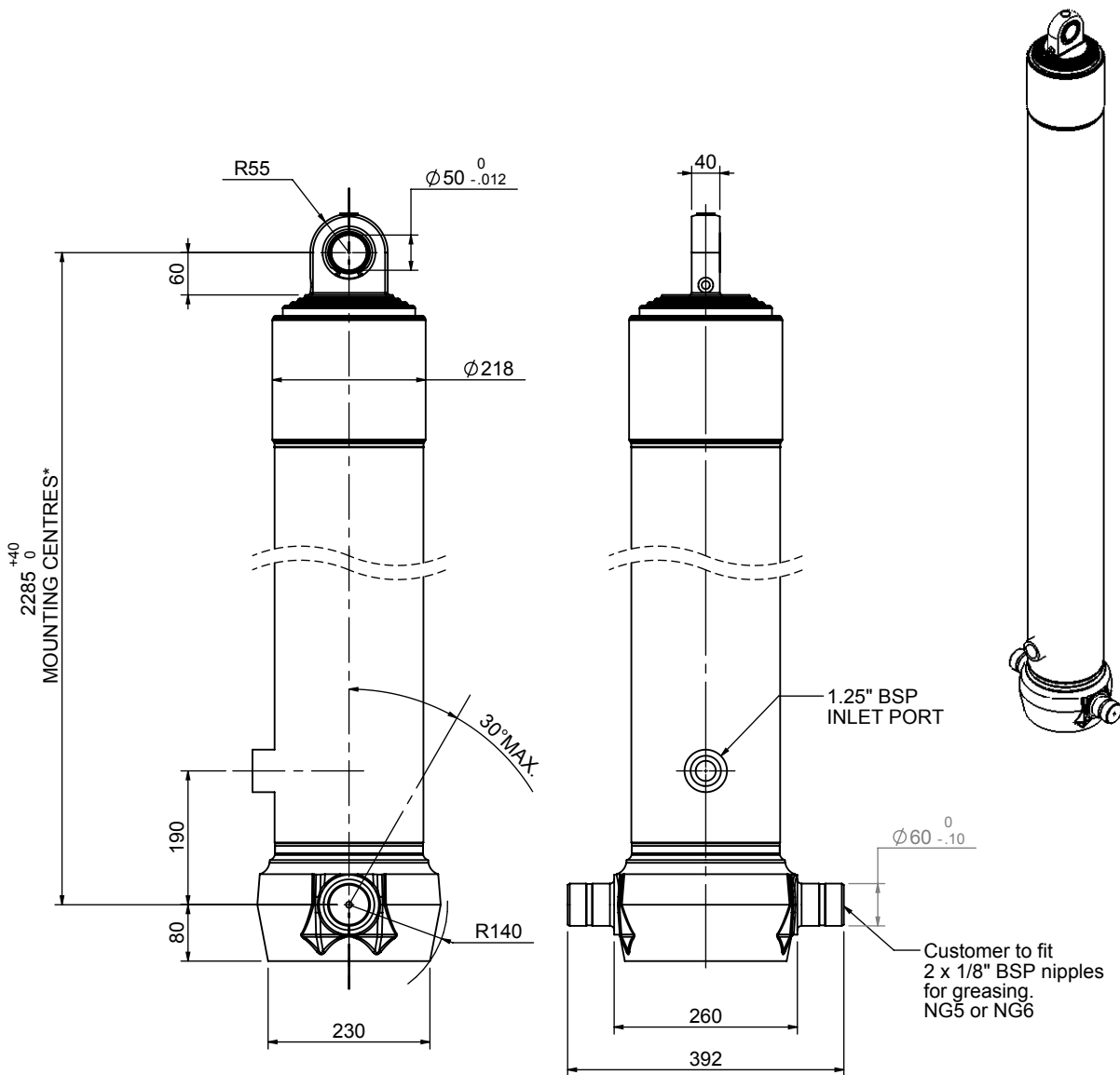


Cylinder 4 stage front end with spherical eye

CS180S48166B19A01C

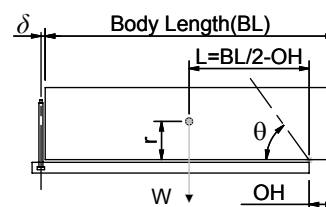


SPECIFICATION

SPECIFICATION		RATED CAPACITY : 30-37 TONNES**		
Stage	Diameter	Length	Stroke	Swept Volume
-	-	-	-	-
-	-	-	-	-
0	211	2275	-	-
1	188	2240	2017	56
2	167	2240	2037	45
3	147	2240	2047	35
4	127	2240	2062	26
Final stroke reduced by	0	Total (+5/-10)	8163	162
Cylinder Mass (Kg)	341.29	Priming Volume	38	
Rated Pressure (Bar)	90	Total Volume (Litres)	200	
Maximum Pressure (Bar)	175	Max. first stage thrust	260 KN	

**TIPPING CAPACITY AT RATED PRESSURE

d = 0 ; r = 900



BODY LENGTH (BL)						OH
10000	10500	11000				
32	50°	31	47°	30	45°	150
34	52°	33	49°	31	46°	450
37	54°	35	51°	33	48°	750

For guidance only;

Higher Rated Pressures may be possible. To check your application, email Edbro plc at <applications@edbro.co.uk>

NOTES

- If hydraulic pressure is used to limit overloading, the system relief valve must be set to the Rated Pressure unless agreed otherwise by Edbro
- The system relief valve can be set to Maximum Pressure if the load is limited by other means. See RATINGS page for advice
- This cylinder is for lifting purposes only and sload conditions must be avoided
- Cylinder is painted in primer paint to RAL5013
- See bracket options page BRKT01, BRKT02
- See installation instructions INSTALL01
- Use oil according to specification OIL01

*Includes 9mm Pull Out
All Stages Chrome Plated



Edbro plc
Nelson Street, Bolton, Lancashire BL3 2JJ UK
Tel +44 (0) 1204 528888 Fax +44 (0) 1204 531957
Email: postmaster@edbro.com Web: www.edbro.com

Technical Specifications are subject to change without notice
Date Created/Updated: 19 August 2009 11:13:10
Refer www.edbro.com to confirm latest specification
All dimensions are in 'mm', unless otherwise stated