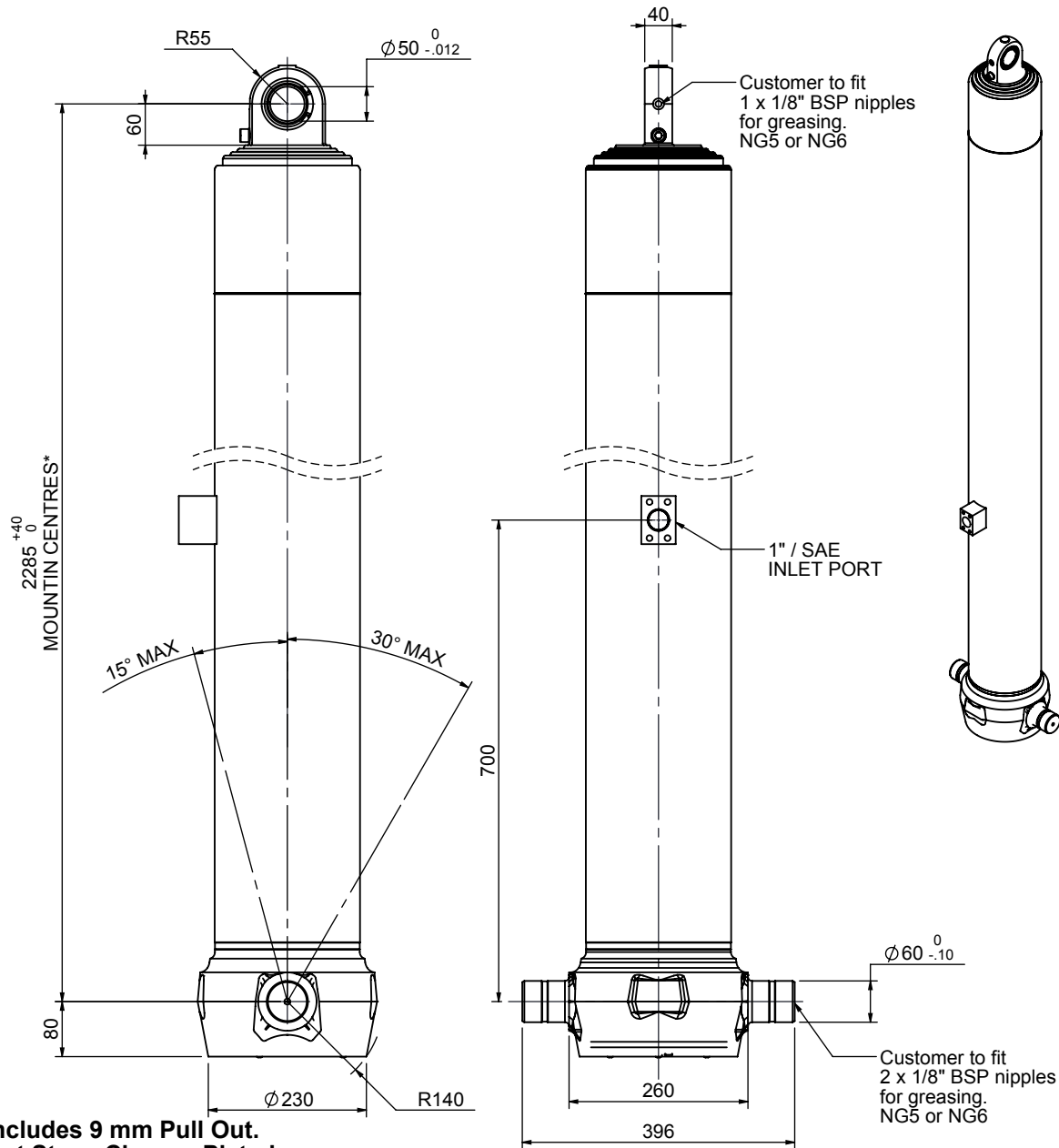


Cylinder 4 stage front end with spherical eye

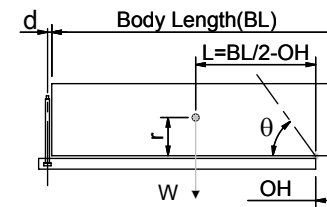


*Includes 9 mm Pull Out.
Last Stage Chrome Plated

CS180S48166S70A01

| SPECIFICATION | | TIPPING CAPACITY : 29-35 TONNES*** | | |
|-------------------------|----------|------------------------------------|--------|--------------|
| Stage | Diameter | Length | Stroke | Swept Volume |
| - | - | - | - | - |
| - | - | - | - | - |
| 0 | 211 | 2275 | - | - |
| 1 | 188 | 2240 | 2018 | 56 |
| 2 | 167 | 2240 | 2037 | 45 |
| 3 | 147 | 2240 | 2047 | 35 |
| 4 | 127 | 2240 | 2062 | 26 |
| Total (+5/-10) | | | 8164 | 162 |
| Final stroke reduced by | 0 | Priming Volume | | 38 |
| Cylinder Mass (Kg) | 339 | Total Volume (Litres) | | 200 |
| Maximum Pressure (Bar) | 175 | Max. first stage thrust | | 265 KN |

***TIPPING CAPACITY AT WORKING PRESSURE



| BODY LENGTH (BL) | | | | | | OH |
|------------------|-------|-------|-----|----|-----|-----|
| 10500 | 11000 | 11500 | | | | |
| 31 | 47° | 30 | 45° | 29 | 43° | 150 |
| 33 | 49° | 31 | 46° | 31 | 44° | 450 |
| 35 | 51° | 33 | 48° | 32 | 45° | 750 |

$d = 0$; $r = 900$; Working Pressure 90 bar

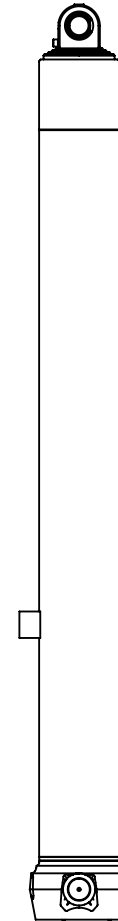
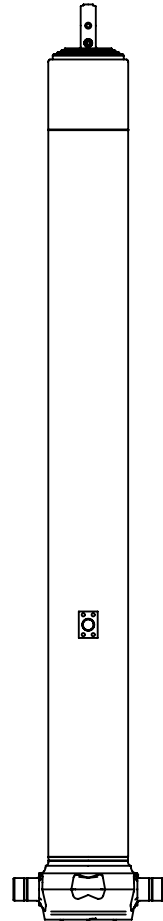
For guidance only;

Higher working pressures and tipping capacities may be possible.

To check your application email - applications@edbro.co.uk

NOTES

1. This cylinder is for lifting purposes only and side load conditions should be avoided
2. Cylinder is painted in primer paint to RAL5013
3. Refer to www.edbro.com for:-
 - Bracket details
 - Installation instructions that must be observed
 - Correct oil selection
 - An explanation of tipping capacity



CS180S48166S70A01