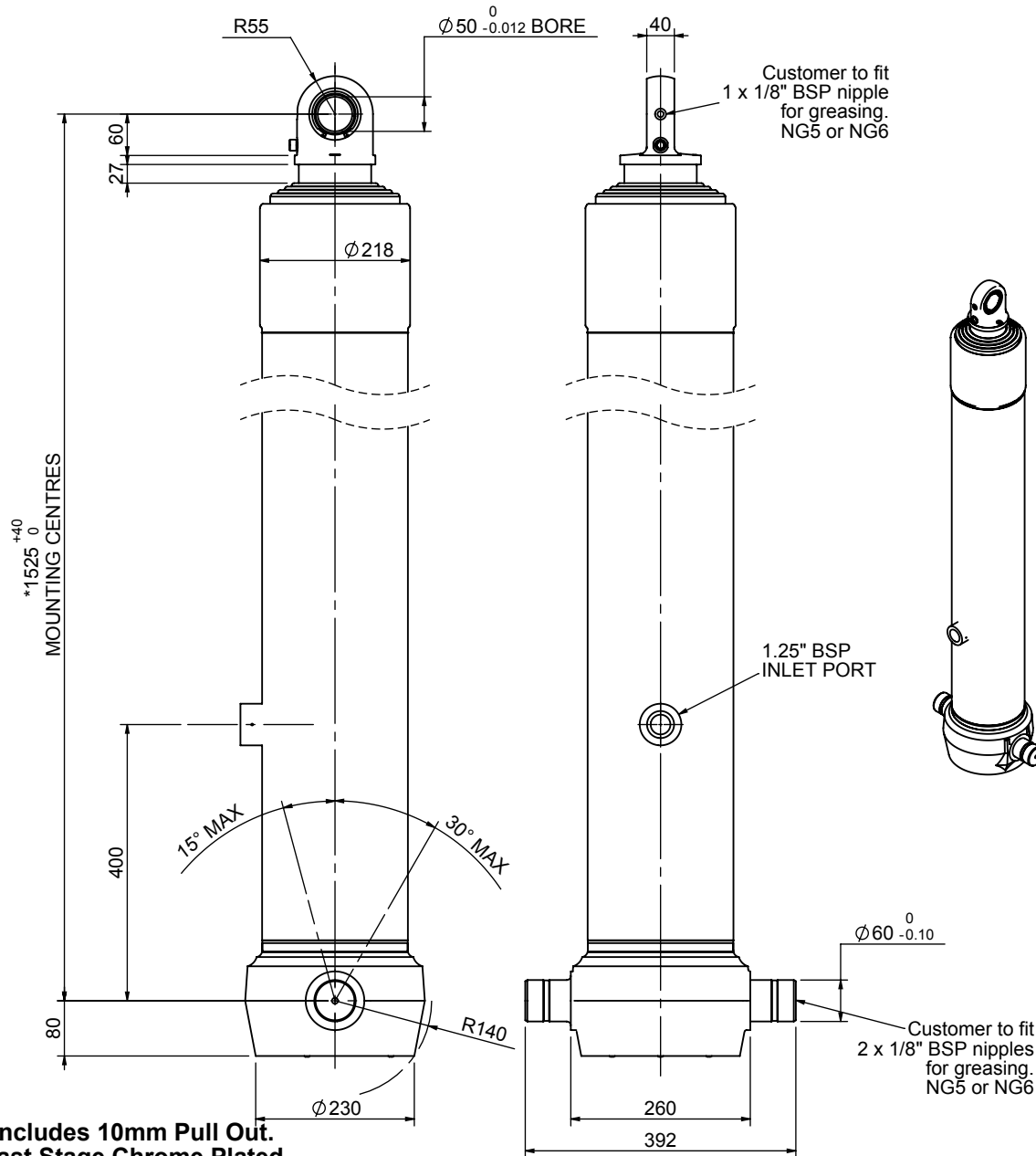


Cylinder 5 stage front end with spherical eye

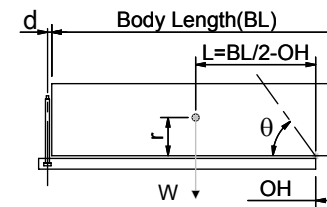
CS180S56233B40A02



*Includes 10mm Pull Out.
Last Stage Chrome Plated

SPECIFICATION		TIPPING CAPACITY : 41-56 TONNES***		
Stage	Diameter	Length	Stroke	Swept Volume
-	-	-	-	-
0	211	1475	-	-
1	188	1440	1217	34
2	167	1440	1237	27
3	147	1440	1247	21
4	127	1440	1262	16
5	105	1465	1267	11
Total (+5/-10)			6230	109
Final stroke reduced by	0	Priming Volume		21
Cylinder Mass (Kg)	263	Total Volume (Litres)		130
Maximum Pressure (Bar)	190	Max. first stage thrust		265 KN

***TIPPING CAPACITY AT WORKING PRESSURE



BODY LENGTH (BL)						OH
7750	8250	8750				
45	49°	43	46°	41	43°	150
50	52°	46	48°	44	45°	450
56	54°	51	50°	48	47°	750

d = 0; r = 750; Working Pressure 175 bar

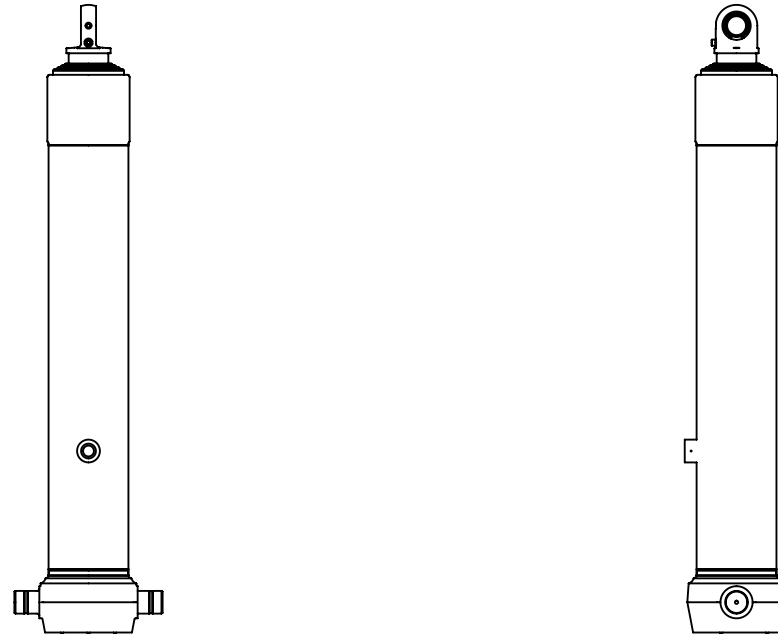
For guidance only;

Higher working pressures and tipping capacities may be possible.

To check your application email - applications@edbro.co.uk

NOTES

1. This cylinder is for lifting purposes only and side load conditions should be avoided
2. Cylinder is painted in primer paint to RAL5013
3. Refer to www.edbro.com for:-
 - Bracket details
 - Installation instructions that must be observed
 - Correct oil selection
 - An explanation of tipping capacity



CS180S56233B40A02