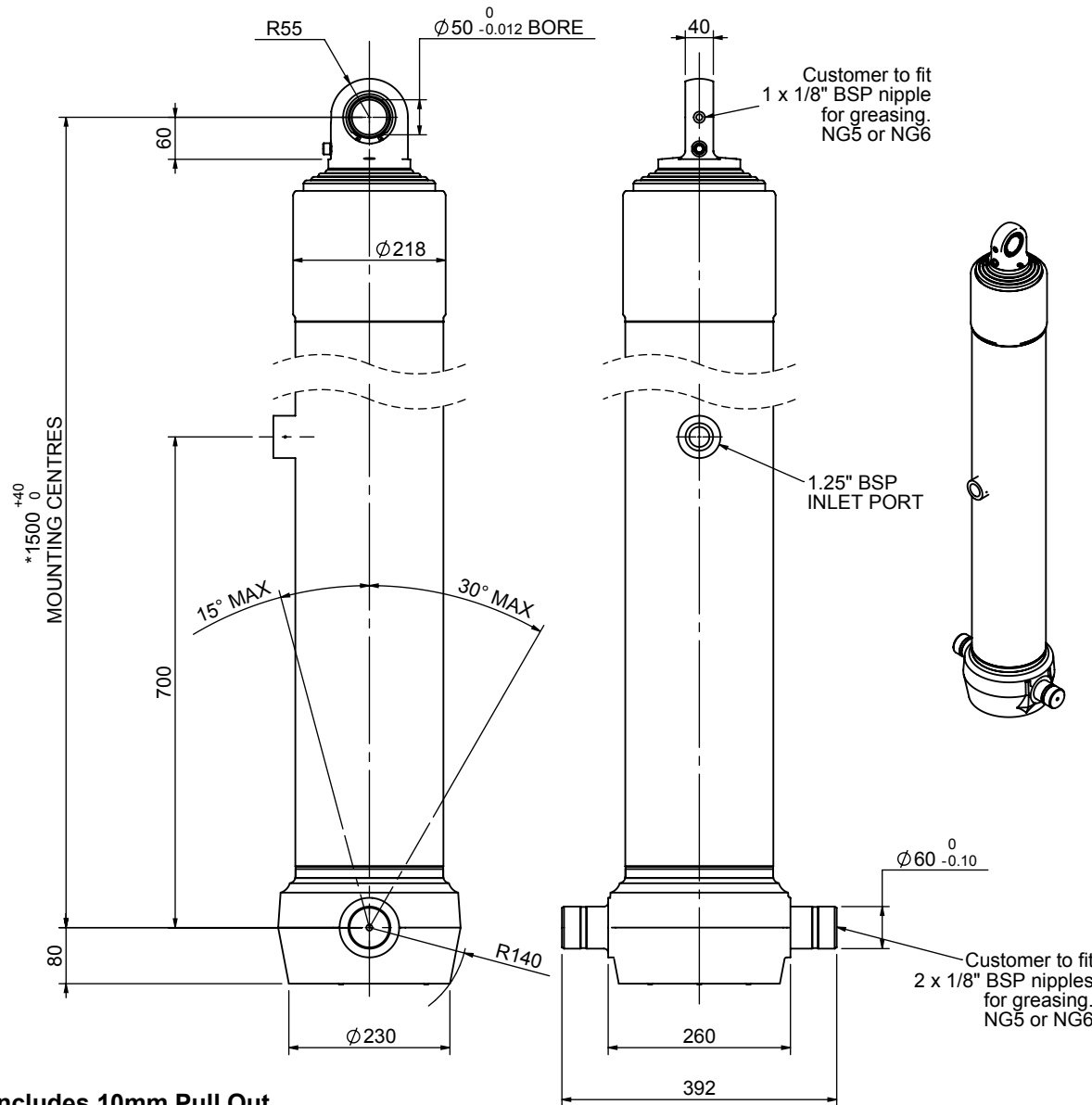


Cylinder 5 stage front end with spherical eye

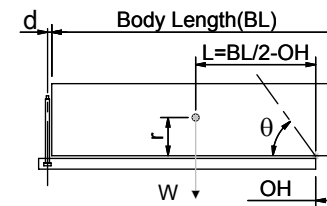


*Includes 10mm Pull Out.
Last Stage Chrome Plated

CS180S56233B70A01

SPECIFICATION		TIPPING CAPACITY : 40-51 TONNES***		
Stage	Diameter	Length	Stroke	Swept Volume
-	-	-	-	-
0	211	1475	-	-
1	188	1440	1217	34
2	167	1440	1237	27
3	147	1440	1247	21
4	127	1440	1262	16
5	105	1440	1267	11
Total (+5/-10)			6230	109
Final stroke reduced by	0	Priming Volume		20
Cylinder Mass (Kg)	262	Total Volume (Litres)		129
Maximum Pressure (Bar)	190	Max. first stage thrust		265 KN

***TIPPING CAPACITY AT WORKING PRESSURE



BODY LENGTH (BL)					OH	
8250	8750	9250				
43	46°	41	43°	40	41°	150
46	48°	44	45°	42	42°	450
51	50°	48	47°	45	44°	750

d = 0; r = 750; Working Pressure 175 bar

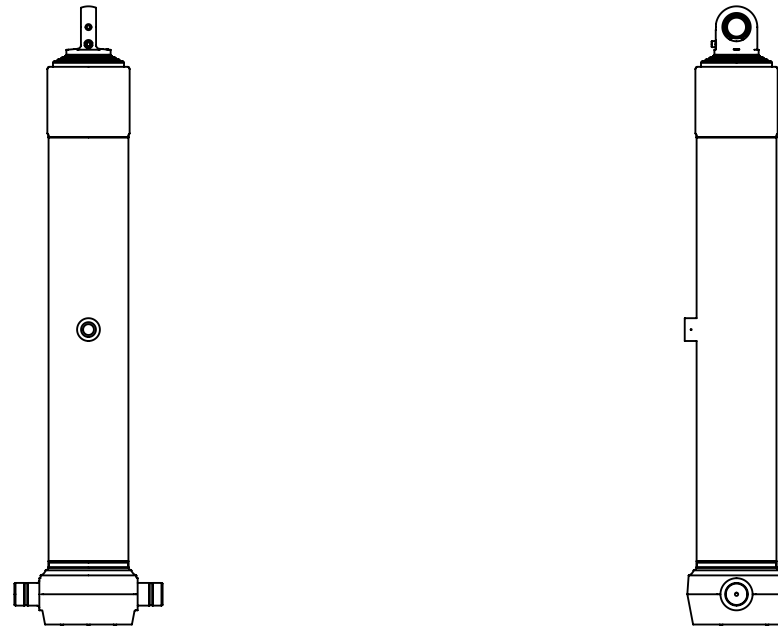
For guidance only;

Higher working pressures and tipping capacities may be possible.

To check your application email - applications@edbro.co.uk

NOTES

1. This cylinder is for lifting purposes only and side load conditions should be avoided
2. Cylinder is painted in primer paint to RAL5013
3. Refer to www.edbro.com for:-
 - Bracket details
 - Installation instructions that must be observed
 - Correct oil selection
 - An explanation of tipping capacity



CS180S56233B70A01