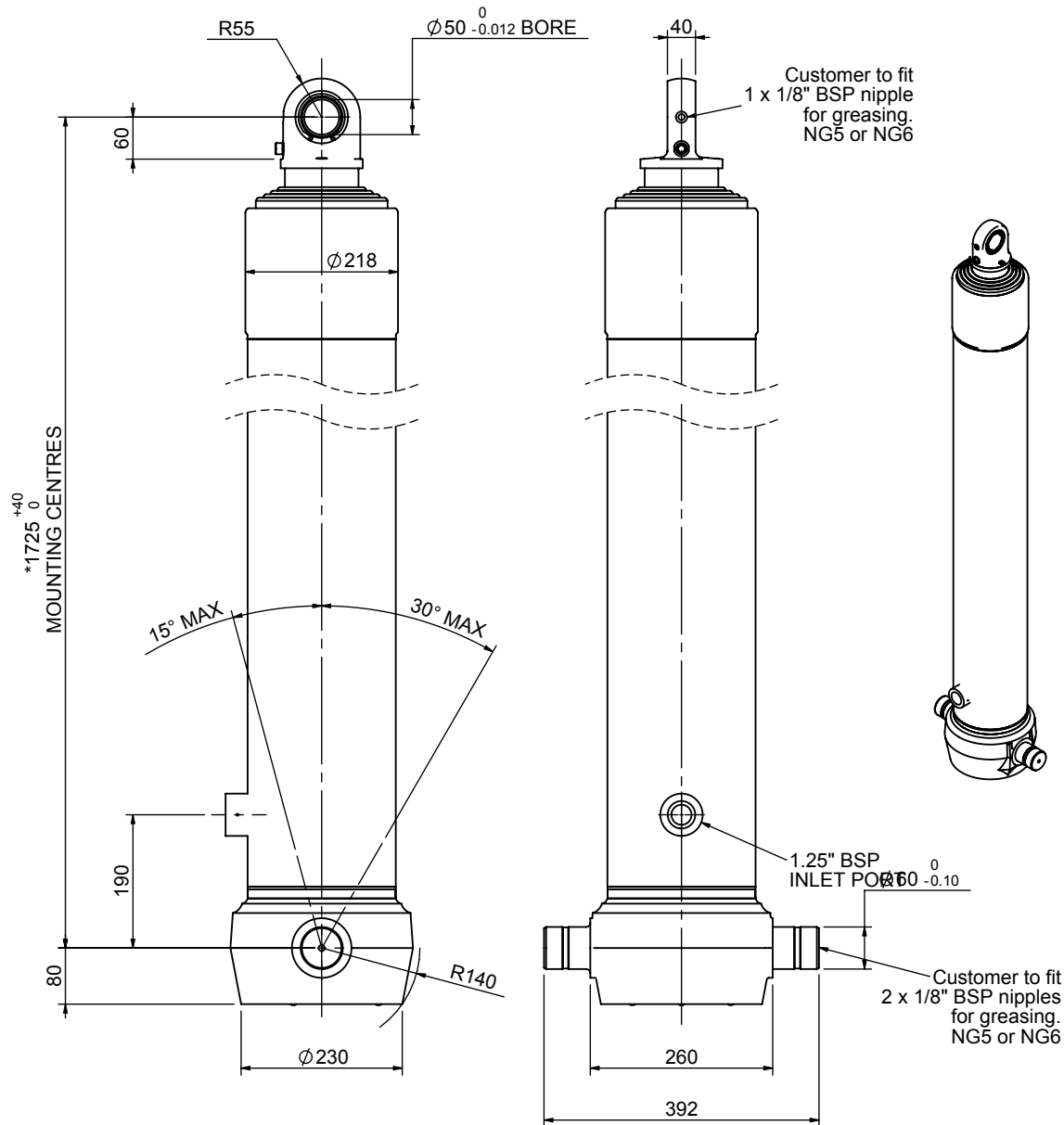


Cylinder 5 stage front end with spherical eye

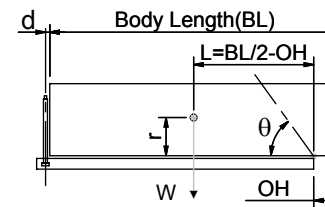


*Includes 10mm Pull Out.
Last Stage Chrome Plated

CS180S57233B19A02

SPECIFICATION		TIPPING CAPACITY : 31-40 TONNES***		
Stage	Diameter	Length	Stroke	Swept Volume
-	-	-	-	-
0	211	1675	-	-
1	188	1640	1417	39
2	167	1640	1437	31
3	147	1640	1447	25
4	127	1640	1462	19
5	105	1665	1467	13
Total (+5/-10)			7230	127
Final stroke reduced by	0	Priming Volume		24
Cylinder Mass (Kg)	293	Total Volume (Litres)		151
Maximum Pressure (Bar)	190	Max. first stage thrust		265 KN

***TIPPING CAPACITY AT WORKING PRESSURE



BODY LENGTH (BL)						OH
9000		9500		10000		
34	49°	32	46°	31	44°	150
36	51°	34	48°	33	45°	450
40	53°	37	50°	35	47°	750

d = 0; r = 750; Working Pressure 135 bar

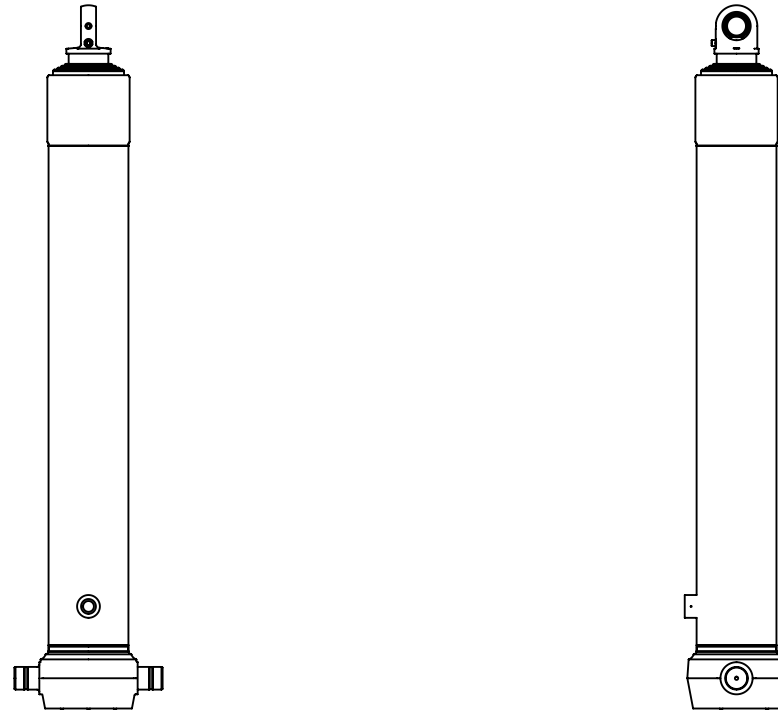
For guidance only;

Higher working pressures and tipping capacities may be possible.

To check your application email - applications@edbro.co.uk

NOTES

1. This cylinder is for lifting purposes only and side load conditions should be avoided
2. Cylinder is painted in primer paint to RAL5013
3. Refer to www.edbro.com for:-
 - Bracket details
 - Installation instructions that must be observed
 - Correct oil selection
 - An explanation of tipping capacity



CS180S57233B19A02