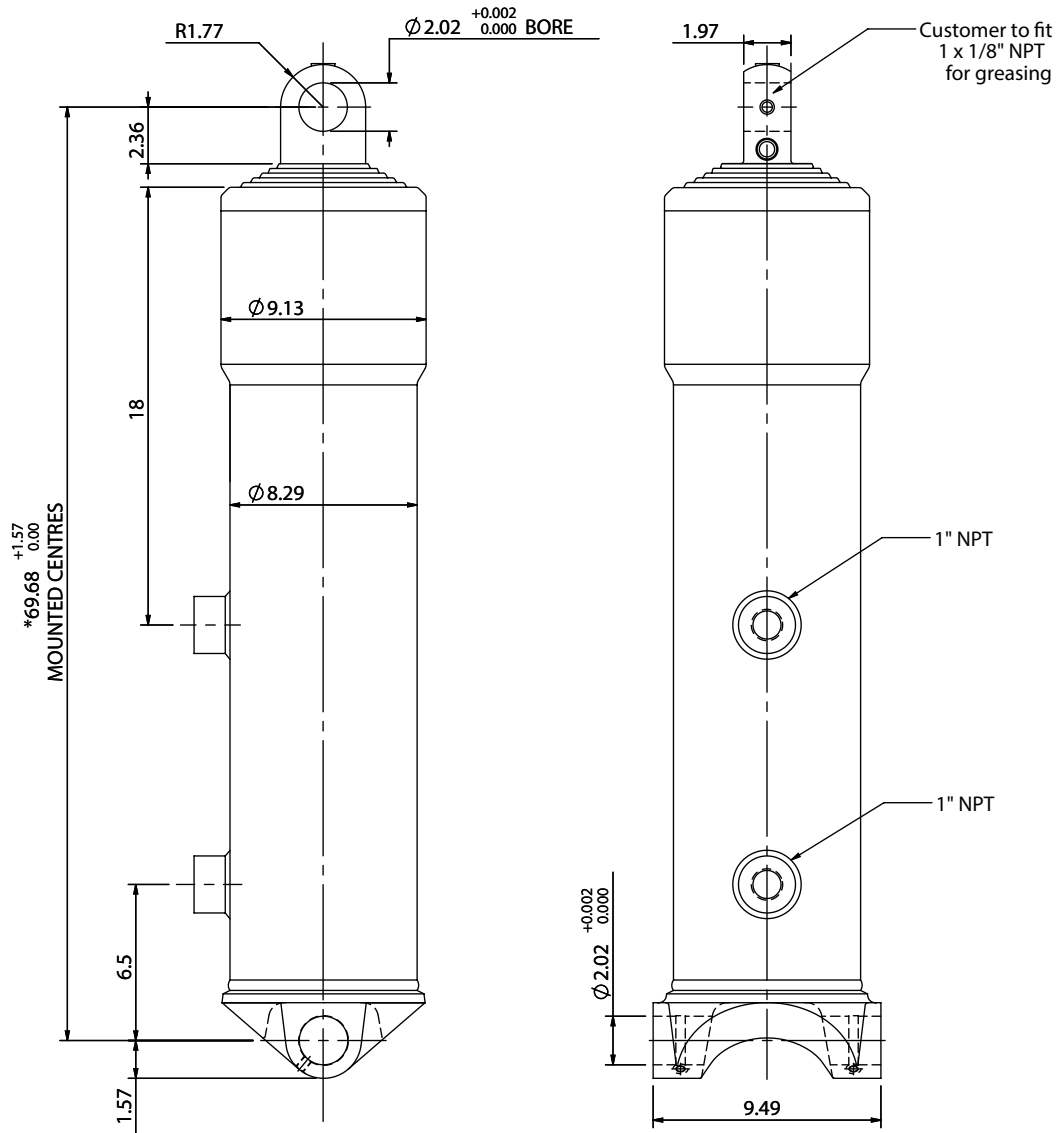


Cylinder 5 stage front end with plain eye

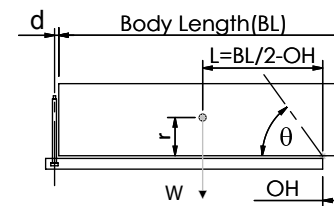


*Includes 0.4" Pull Out. Last Stage Chrome Plated

CS18EE506733A499

| SPECIFICATION | | TIPPING CAPACITY : 42-58 TONS*** | | |
|-------------------------|----------|----------------------------------|--------|--------------|
| Stage | Diameter | Length | Stroke | Swept Volume |
| - | - | - | - | - |
| 0 | 8.29 | 62.60 | - | - |
| 1 | 7.40 | 63.39 | 54.72 | 10.3 |
| 2 | 6.57 | 63.39 | 55.39 | 8.2 |
| 3 | 5.79 | 63.39 | 55.79 | 6.3 |
| 4 | 5.00 | 63.39 | 56.38 | 4.8 |
| 5 | 4.13 | 63.39 | 42.80 | 2.4 |
| Total (+0.2/-0.4) | | | 265.08 | 32 |
| Final stroke reduced by | 13.78 | Priming Volume | | 6.1 |
| Cylinder Mass (lb) | 605 | Total Volume (US gal) | | 38.1 |
| Maximum Pressure (PSI) | 2200 | Max. first stage thrust | | 25 |

***TIPPING CAPACITY AT WORKING PRESSURE



| BODY LENGTH (BL) ft | | | | | | OH Inches |
|---------------------|-----|----|-----|----|-----|--------------|
| 27 | 29 | 30 | 27 | 29 | 30 | |
| 46 | 50° | 44 | 47° | 42 | 44° | 6 |
| 52 | 52° | 47 | 49° | 44 | 46° | 18 |
| 58 | 55° | 53 | 51° | 49 | 48° | 30 |

$d = 0$; $r = 35.5$; Working Pressure 2200 PSI

For guidance only;
Higher working pressures and tipping capacities may be possible.
To check your application email - applications@edbro.co.uk

NOTES

- This cylinder is for lifting purposes only and side load conditions should be avoided
- Cylinder is painted in primer paint to RAL5013
- Refer to www.edbro.com for:-
 - Bracket details
 - Installation instructions that must be observed
 - Correct oil selection
 - An explanation of tipping capacity