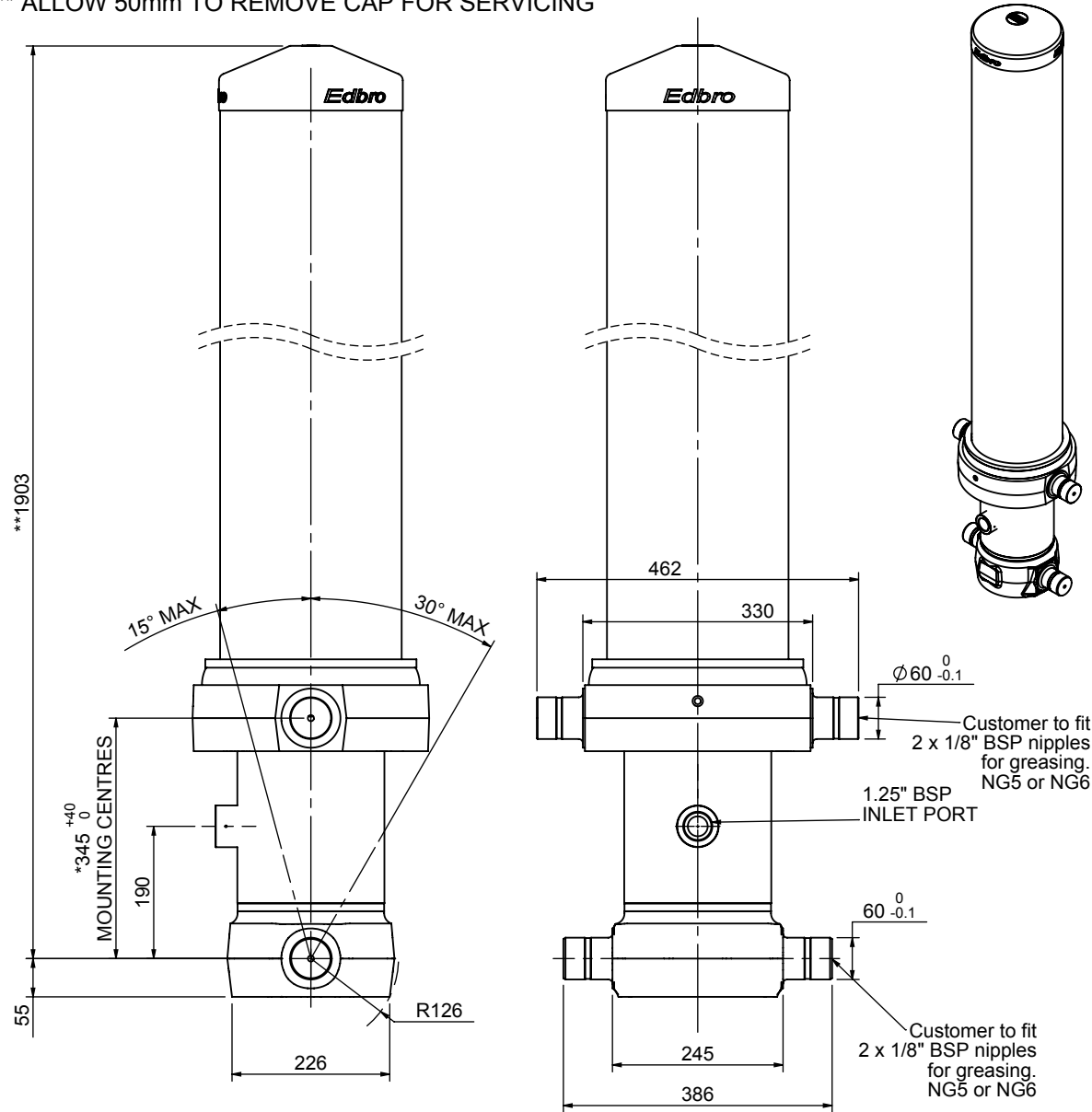


Cylinder 5 stage front end with outer cover

** ALLOW 50mm TO REMOVE CAP FOR SERVICING



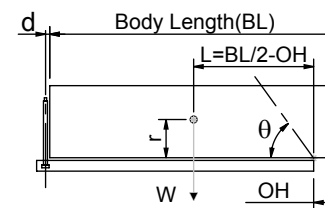
*Includes 7mm Pull Out.
All Stages Chrome Plated

CS18L057983B19A11C

SPECIFICATION TIPPING CAPACITY : 36-45 TONNES***

Stage	Diameter	Length	Stroke	Swept Volume
OUTER COVER	261	1515	-	-
0	211	1825	-	-
1	188	1790	1570	44
2	167	1790	1587	35
3	147	1790	1597	27
4	127	1790	1612	20
5	105	1790	1617	14
Total (+5/-10)			7983	140
Final stroke reduced by	0	Priming Volume		25.1
Cylinder Mass (Kg)	377	Total Volume (Litres)		165.1
Maximum Pressure (Bar)	190	Max. first stage thrust		200 KN

***TIPPING CAPACITY AT WORKING PRESSURE



BODY LENGTH (BL)						OH
9980		10479		10978		
39	47°	37	45°	36	42°	150
41	48°	39	46°	38	44°	450
45	50°	42	47°	40	45°	750

$d = 229$; $r = 900$; Working Pressure 151 bar
Tipping angle (θ)
Body + payload mass, W (tonne)

For guidance only;
Higher working pressures and tipping capacities may be possible.
To check your application email - applications@edbro.co.uk

NOTES

1. This cylinder is for lifting purposes only and side load conditions should be avoided
2. Cylinder is painted in primer paint to RAL5013
3. Refer to www.edbro.com for;-
 - Bracket details
 - Installation instructions that must be observed
 - Correct oil selection
 - An explanation of tipping capacity



JOST UK Ltd
Edbro House, Nelson Street, Bolton, BL3 2JJ, UK
Tel +44 (0) 1204 528888 Fax +44 (0) 1204 531957
Email: sales@jost-world.com Web: www.edbro.com

Technical Specifications are subject to change without notice
Date Created/Updated: 08 October 2020
Refer www.edbro.com to confirm latest specification
All dimensions are in 'mm', unless otherwise stated