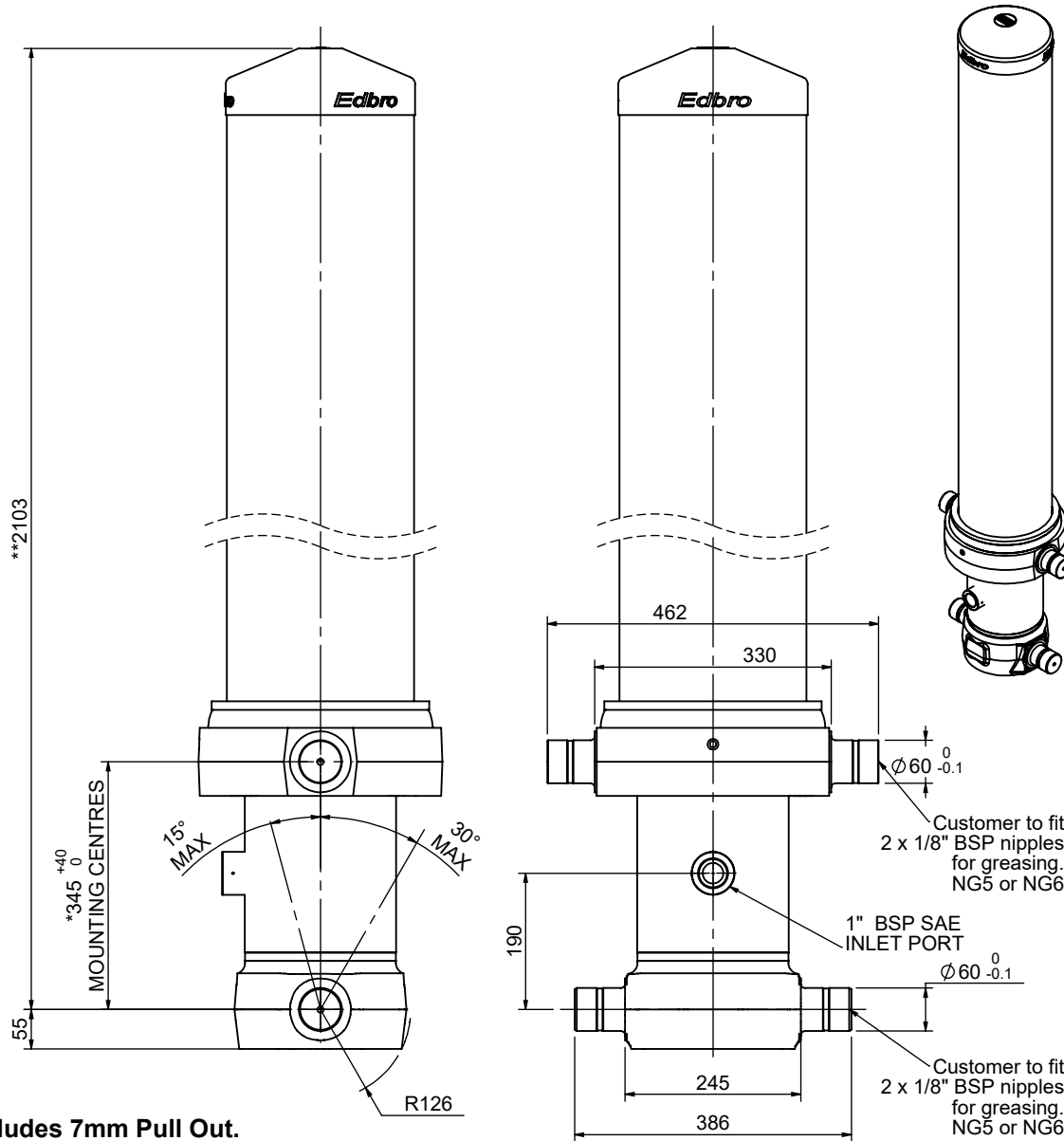


Cylinder 5 stage front end with outer cover

** ALLOW 50mm TO REMOVE CAP FOR SERVICING



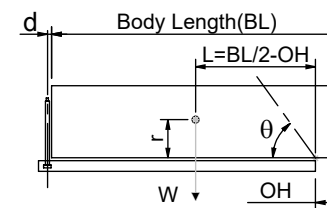
*Includes 7mm Pull Out.
All Stages Chrome Plated
Blocked Small Inner

CS18L058983B19A11B

SPECIFICATION TIPPING CAPACITY : 33 - 45 TONNES***

Stage	Diameter	Length	Stroke	Swept Volume
OUTER COVER	261	1715	-	-
0	211	2025	-	-
1	188	1990	1770	49
2	167	1990	1787	39
3	147	1990	1797	31
4	127	1990	1812	23
5	105	1990	1817	1.3
Total (+5/-10)			8983	143
Final stroke reduced by	0	Priming Volume		17
Cylinder Mass (Kg)	413	Total Volume (Litres)		160
Maximum Pressure (Bar)	190	Max. first stage thrust		200 KN

***TIPPING CAPACITY AT WORKING PRESSURE



BODY LENGTH (BL)						OH
9500		10000		10500		
37	56°	34	53°	33	50°	150
40	58°	37	55°	35	52°	450
45	60°	41	57°	38	54°	750

d = 229; r = 900; Working Pressure 123 bar

Tipping angle (θ)

Body + payload mass, W (tonne)

For guidance only;

Higher working pressures and tipping capacities may be possible.

To check your application email - applications@edbro.co.uk

NOTES

1. This cylinder is for lifting purposes only and side load conditions should be avoided
2. Cylinder is painted in primer paint to RAL5013
3. Refer to www.edbro.com for;-
 - Bracket details
 - Installation instructions that must be observed
 - Correct oil selection
 - An explanation of tipping capacity



JOST UK Ltd
Edbro House, Nelson Street, Bolton, England, BL3 2JJ
Tel +44 (0) 1204 528888 Fax +44 (0) 1204 531957
Email: sales@jost-world.com Web: www.edbro.com

Technical Specifications are subject to change without notice
Date Created/Updated: 11 June 2019
Refer www.edbro.com to confirm latest specification
All dimensions are in 'mm', unless otherwise stated