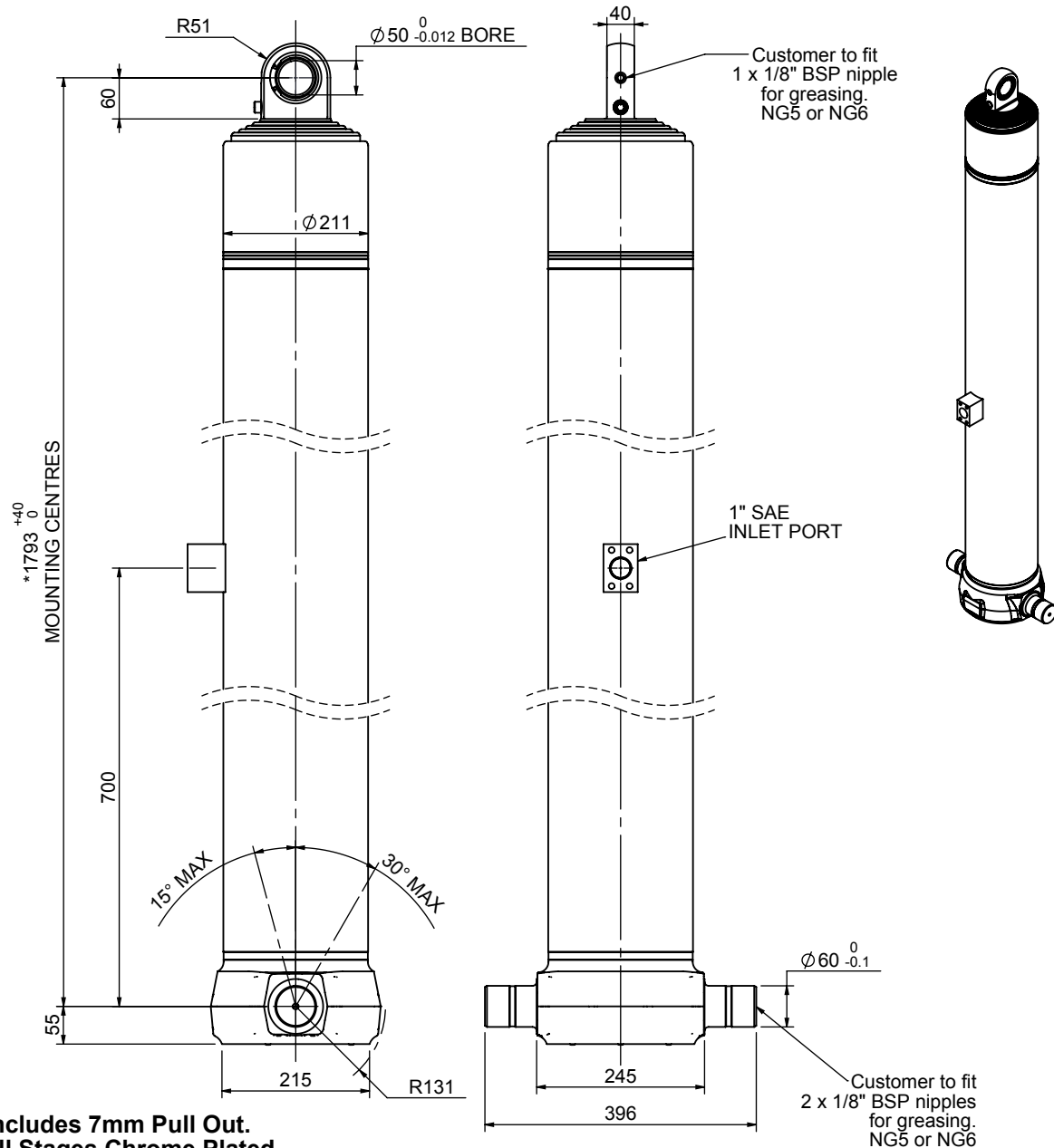


Cylinder 5 stage front end with spherical eye

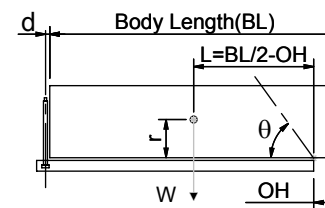


*Includes 7mm Pull Out.
All Stages Chrome Plated

CS18LS57633S70A02C

SPECIFICATION		TIPPING CAPACITY : 28-36 TONNES***		
Stage	Diameter	Length	Stroke	Swept Volume
-	-	-	-	-
0	211	1755	-	-
1	188	1720	1500	42
2	167	1720	1517	33
3	147	1720	1527	26
4	127	1720	1542	20
5	105	1720	1547	13
Total (+5/-10)			7633	134
Final stroke reduced by	0	Priming Volume		24.8
Cylinder Mass (Kg)	290	Total Volume (Litres)		158.8
Maximum Pressure (Bar)	190	Max. first stage thrust		200 KN

***TIPPING CAPACITY AT WORKING PRESSURE



BODY LENGTH (BL)						OH
9250		9750		10250		
31	51°	30	48°	29	45°	150
34	53°	32	49°	30	47°	450
37	55°	35	51°	33	48°	750

d = 0; r = 900; Working Pressure 120 bar

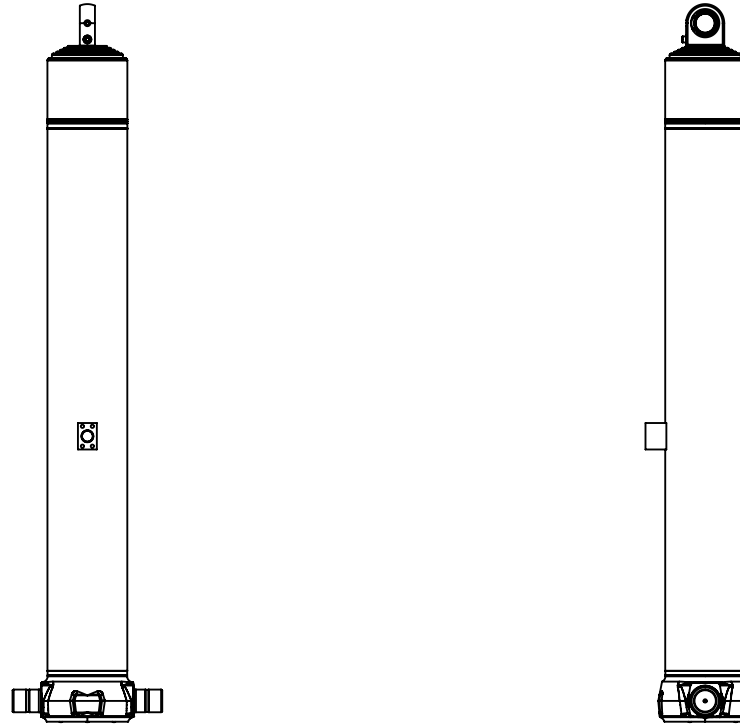
For guidance only;

Higher working pressures and tipping capacities may be possible.

To check your application email - applications@edbro.co.uk

NOTES

1. This cylinder is for lifting purposes only and side load conditions should be avoided
2. Cylinder is painted in primer paint to RAL5013
3. Refer to www.edbro.com for;-
 - Bracket details
 - Installation instructions that must be observed
 - Correct oil selection
 - An explanation of tipping capacity



CS18LS57633S70A02C