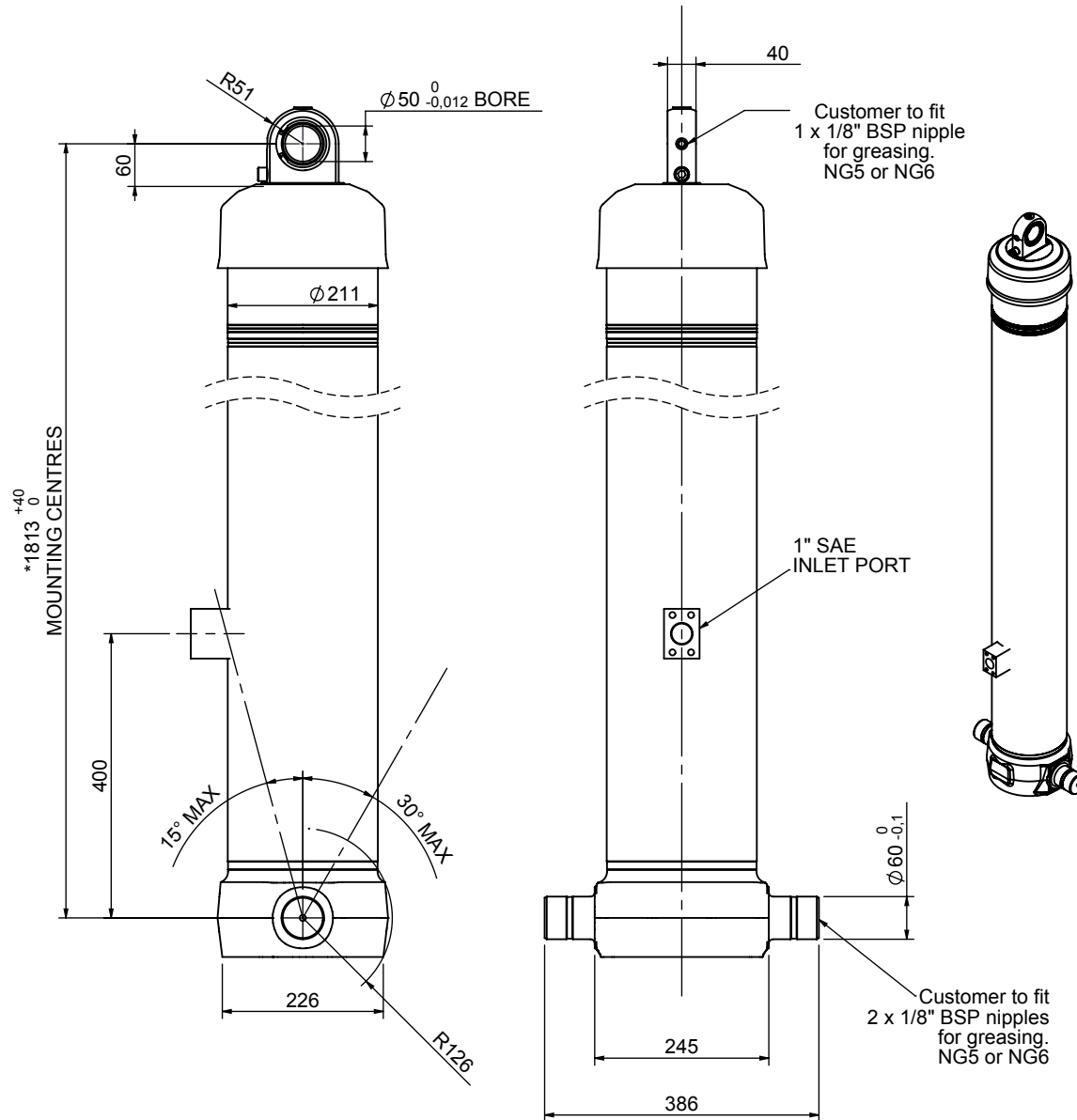


# Cylinder 5 stage front end with spheric eye

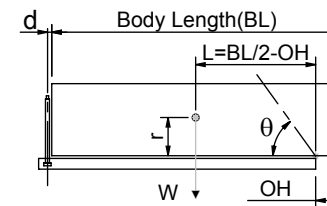


\*Includes 8 mm Pull Out.  
All stages chrome plated

# CS18LS57733S40A02B-203/CAP

| SPECIFICATION           |          | TIPPING CAPACITY : 29-35 TONNES*** |        |              |
|-------------------------|----------|------------------------------------|--------|--------------|
| Stage                   | Diameter | Length                             | Stroke | Swept Volume |
| -                       | -        | -                                  | -      | -            |
| 0                       | 211      | 1775                               | -      | -            |
| 1                       | 188      | 1740                               | 1520   | 42           |
| 2                       | 167      | 1740                               | 1537   | 34           |
| 3                       | 147      | 1740                               | 1547   | 26           |
| 4                       | 127      | 1740                               | 1562   | 20           |
| 5                       | 105      | 1740                               | 1567   | 14           |
|                         |          | Total (+5/-10)                     | 7733   | 136          |
| Final stroke reduced by | 0        | Priming Volume                     |        | 0            |
| Cylinder Mass (Kg)      | 293      | Total Volume (Litres)              |        | 136          |
| Maximum Pressure (Bar)  | 190      | Max. first stage thrust            |        | 200 KN       |

### \*\*\*TIPPING CAPACITY AT WORKING PRESSURE



| BODY LENGTH (BL) |     |       |     |       |     | OH  |
|------------------|-----|-------|-----|-------|-----|-----|
| 9750             |     | 10000 |     | 10250 |     |     |
| 30               | 48° | 29    | 47° | 29    | 46° | 150 |
| 32               | 50° | 31    | 49° | 31    | 47° | 450 |
| 35               | 52° | 34    | 50° | 33    | 49° | 750 |

d = 0; r = 900; Working Pressure 120 bar

### For guidance only;

Higher working pressures and tipping capacities may be possible.

To check your application email - [applications@edbro.co.uk](mailto:applications@edbro.co.uk)

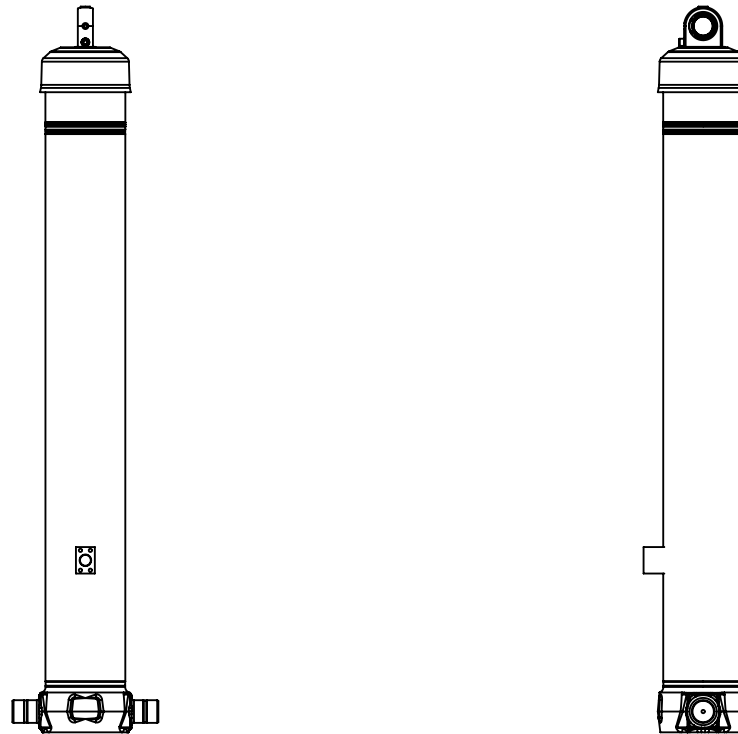
### NOTES

1. This cylinder is for lifting purposes only and side load conditions should be avoided
2. Cylinder is painted in primer paint to RAL9005
3. Refer to [www.edbro.com](http://www.edbro.com) for:-
  - Bracket details
  - Installation instructions that must be observed
  - Correct oil selection
  - An explanation of tipping capacity



**Edbro plc**  
Nelson Street, Bolton, England, BL3 2JJ  
Tel +44 (0) 1204 528888 Fax +44 (0) 1204 531957  
Email: [postmaster@edbro.com](mailto:postmaster@edbro.com) Web: [www.edbro.com](http://www.edbro.com)

Technical Specifications are subject to change without notice  
Date Created/Updated: 28 April 2020  
Refer [www.edbro.com](http://www.edbro.com) to confirm latest specification  
All dimensions are in 'mm', unless otherwise stated



CS18LS57733S40A02B-203/CAP