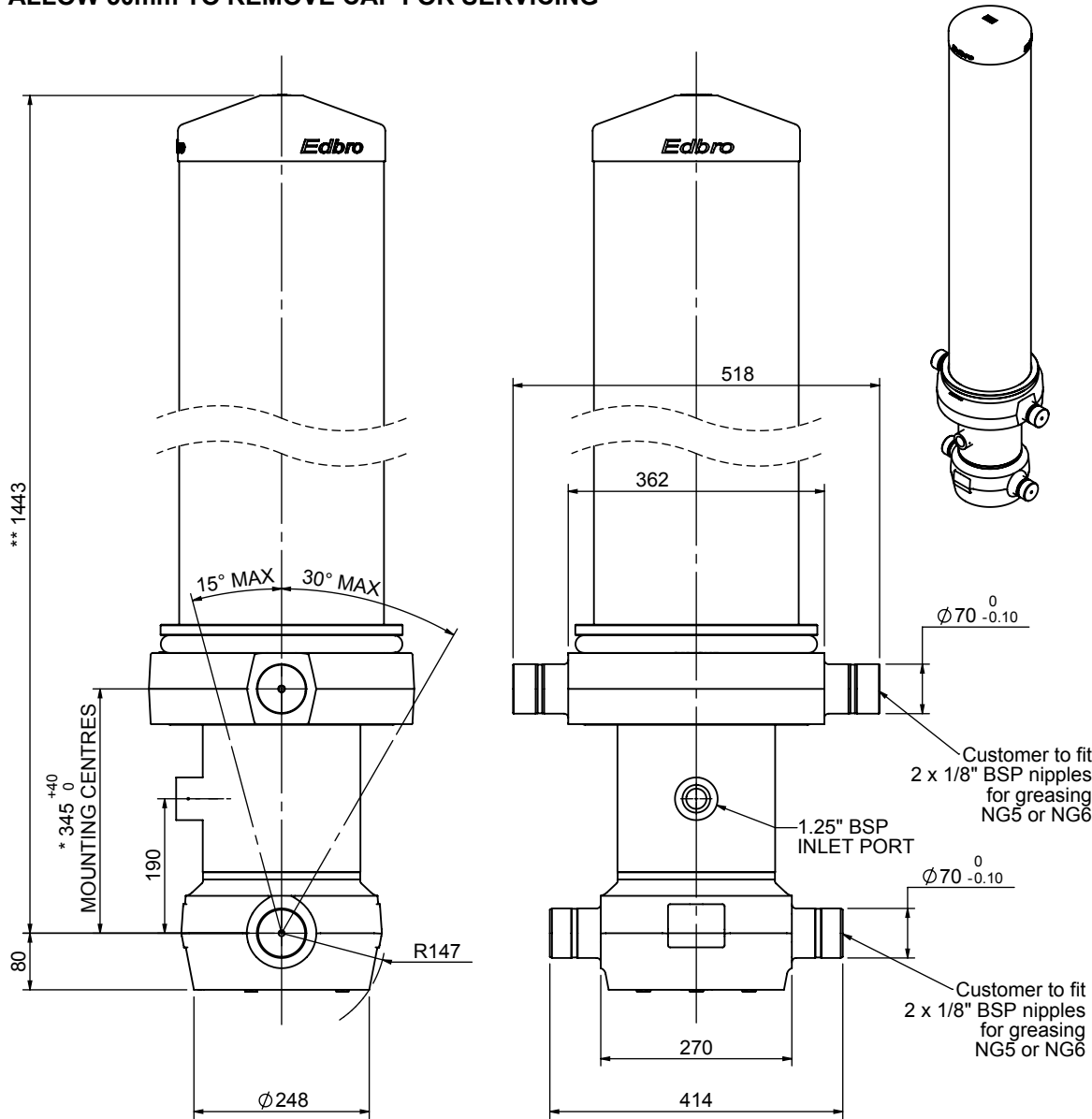


Cylinder 5 stage front end with outer cover

****ALLOW 50mm TO REMOVE CAP FOR SERVICING**

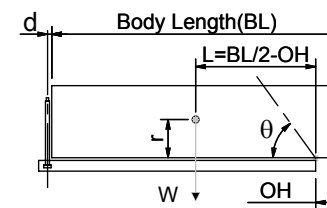


*Includes 11mm Pull Out.

CS190055678B19A11

SPECIFICATION		TIPPING CAPACITY : 53-83 TONNES***		
Stage	Diameter	Length	Stroke	Swept Volume
OUTER COVER	289	1035	-	-
0	223	1378	-	-
1	198	1340	1103	34
2	176	1340	1127	27
3	155	1340	1137	21
4	136	1340	1147	17
5	117	1340	1162	12
Total (+5/-10)			5676	111
Final stroke reduced by	0	Priming Volume		23
Cylinder Mass (Kg)	347	Total Volume (Litres)		134
Maximum Pressure (Bar)	190	Max. first stage thrust		350 KN

***TIPPING CAPACITY AT WORKING PRESSURE



BODY LENGTH (BL)						OH
6750	7250	7750				
61	49°	56	46°	53	43°	150
70	52°	63	48°	58	44°	450
83	55°	71	50°	64	46°	750

d = 229; r = 900; Working Pressure 165 bar

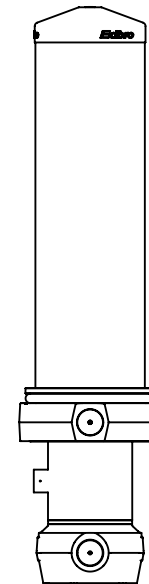
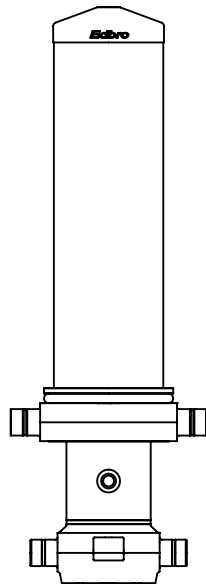
For guidance only;

Higher working pressures and tipping capacities may be possible.

To check your application email - applications@edbro.co.uk

NOTES

1. This cylinder is for lifting purposes only and side load conditions should be avoided
2. Cylinder is painted in primer paint to RAL5013
3. Refer to www.edbro.com for:-
 - Bracket details
 - Installation instructions that must be observed
 - Correct oil selection
 - An explanation of tipping capacity



CS190055678B19A11