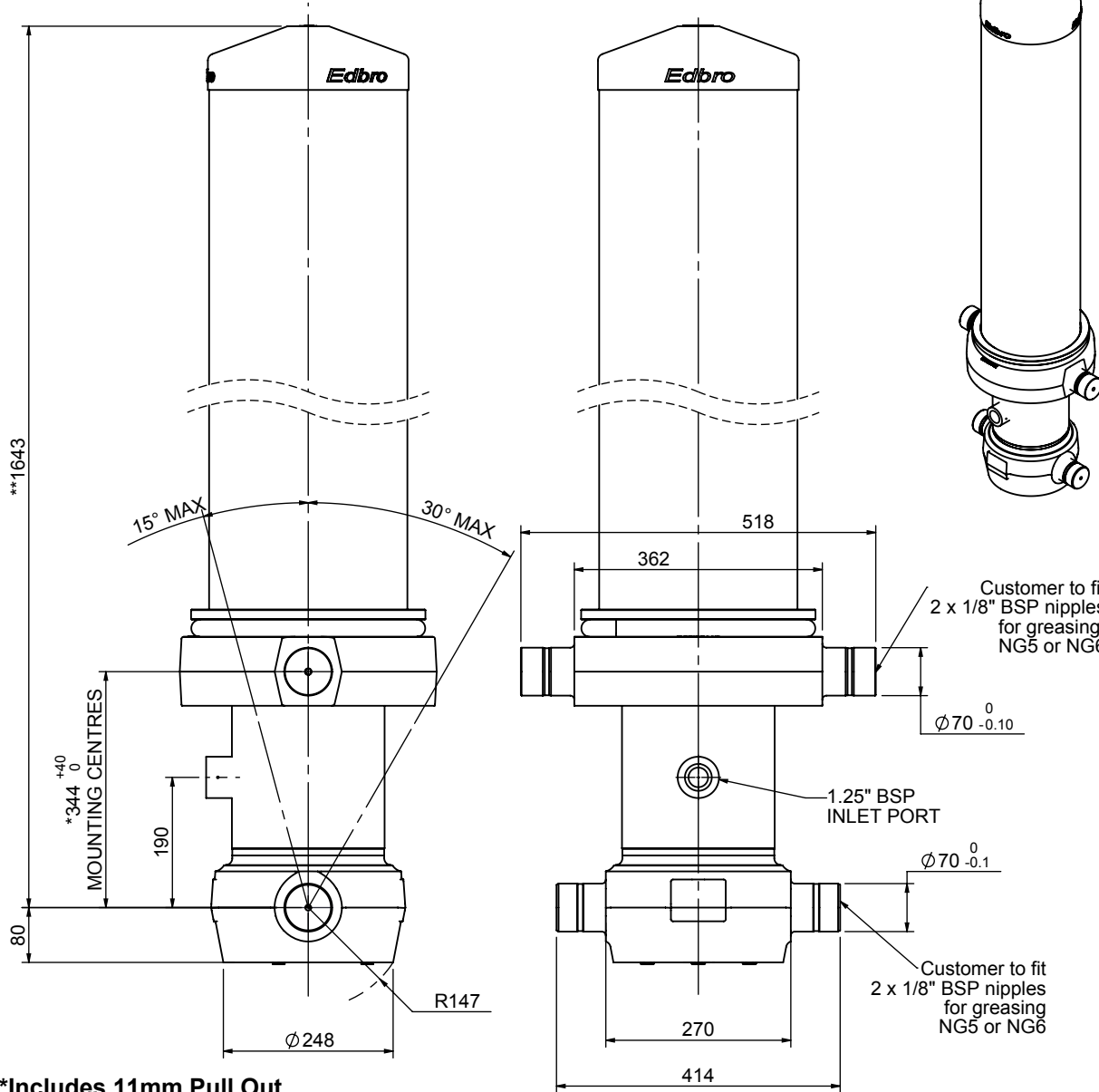


# Cylinder 5 stage front end with outer cover

**\*\*ALLOW 50mm TO REMOVE CAP FOR SERVICING**



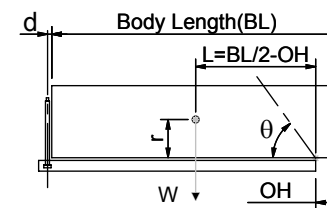
**\*Includes 11mm Pull Out.  
All Stages Chrome Plated**

# CS19005667819A11C

**SPECIFICATION** **TIPPING CAPACITY : 54-76 TONNES\*\*\***

Stage	Diameter	Length	Stroke	Swept Volume
OUTER COVER	289	1235	-	-
0	223	1578	-	-
1	198	1540	1306	40
2	176	1540	1327	32
3	155	1540	1337	25
4	136	1540	1347	20
5	117	1540	1362	15
Total (+5/-10)			6679	132
Final stroke reduced by	0	Priming Volume		26.5
Cylinder Mass (Kg)	382	Total Volume (Litres)		158.5
Maximum Pressure (Bar)	190	Max. first stage thrust		350 KN

**\*\*\*TIPPING CAPACITY AT WORKING PRESSURE**



BODY LENGTH (BL)						OH
8000	8500	9000				
61	49°	57	46°	54	43°	150
67	51°	62	48°	59	45°	450
76	53°	69	50°	64	47°	750

$d = 229; r = 900; \text{Working Pressure } 175 \text{ bar}$   
 Tipping angle ( $\theta$ )  
 Body + payload mass, W (tonne)

**For guidance only;**  
 Higher working pressures and tipping capacities may be possible.  
 To check your application email - [applications@edbro.co.uk](mailto:applications@edbro.co.uk)

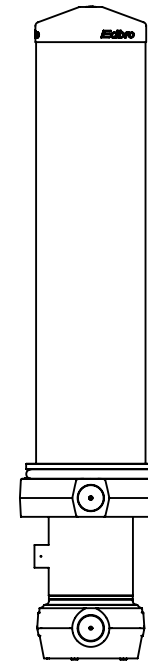
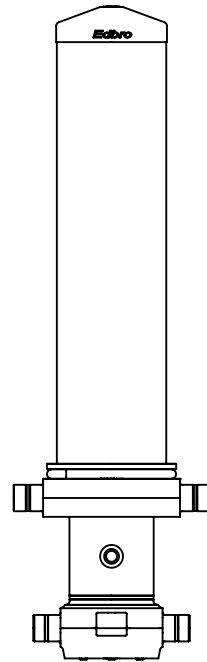
**NOTES**

1. This cylinder is for lifting purposes only and side load conditions should be avoided
2. Cylinder is painted in primer paint to RAL5013
3. Refer to [www.edbro.com](http://www.edbro.com) for:-
  - Bracket details
  - Installation instructions that must be observed
  - Correct oil selection
  - An explanation of tipping capacity



**Edbro plc**  
 Nelson Street, Bolton, England, BL3 2JJ  
 Tel +44 (0) 1204 528888 Fax +44 (0) 1204 531957  
 Email: [postmaster@edbro.com](mailto:postmaster@edbro.com) Web: [www.edbro.com](http://www.edbro.com)

Technical Specifications are subject to change without notice  
 Date Created/Updated: 22 April 2014  
 Refer [www.edbro.com](http://www.edbro.com) to confirm latest specification  
 All dimensions are in 'mm', unless otherwise stated



CS190056678B19A11C